

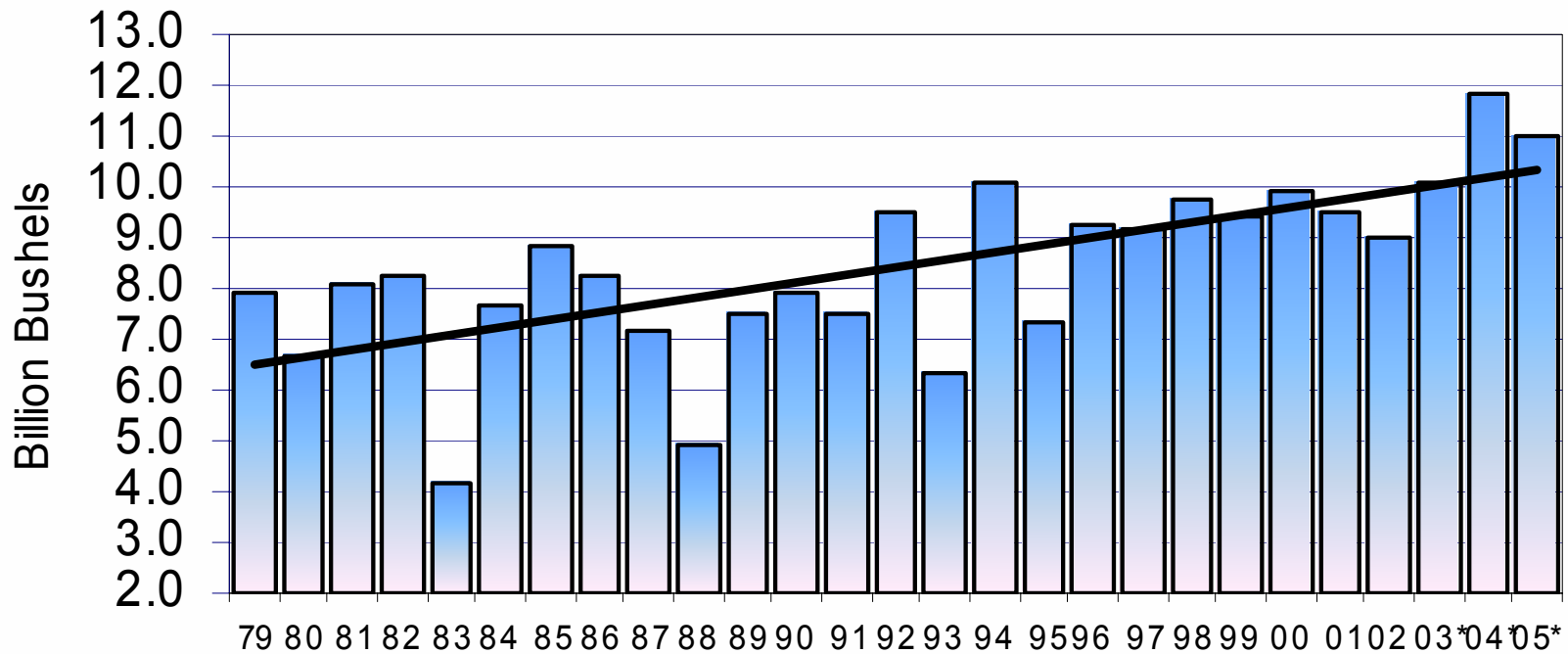


# *Outlook for Commodity Prices*

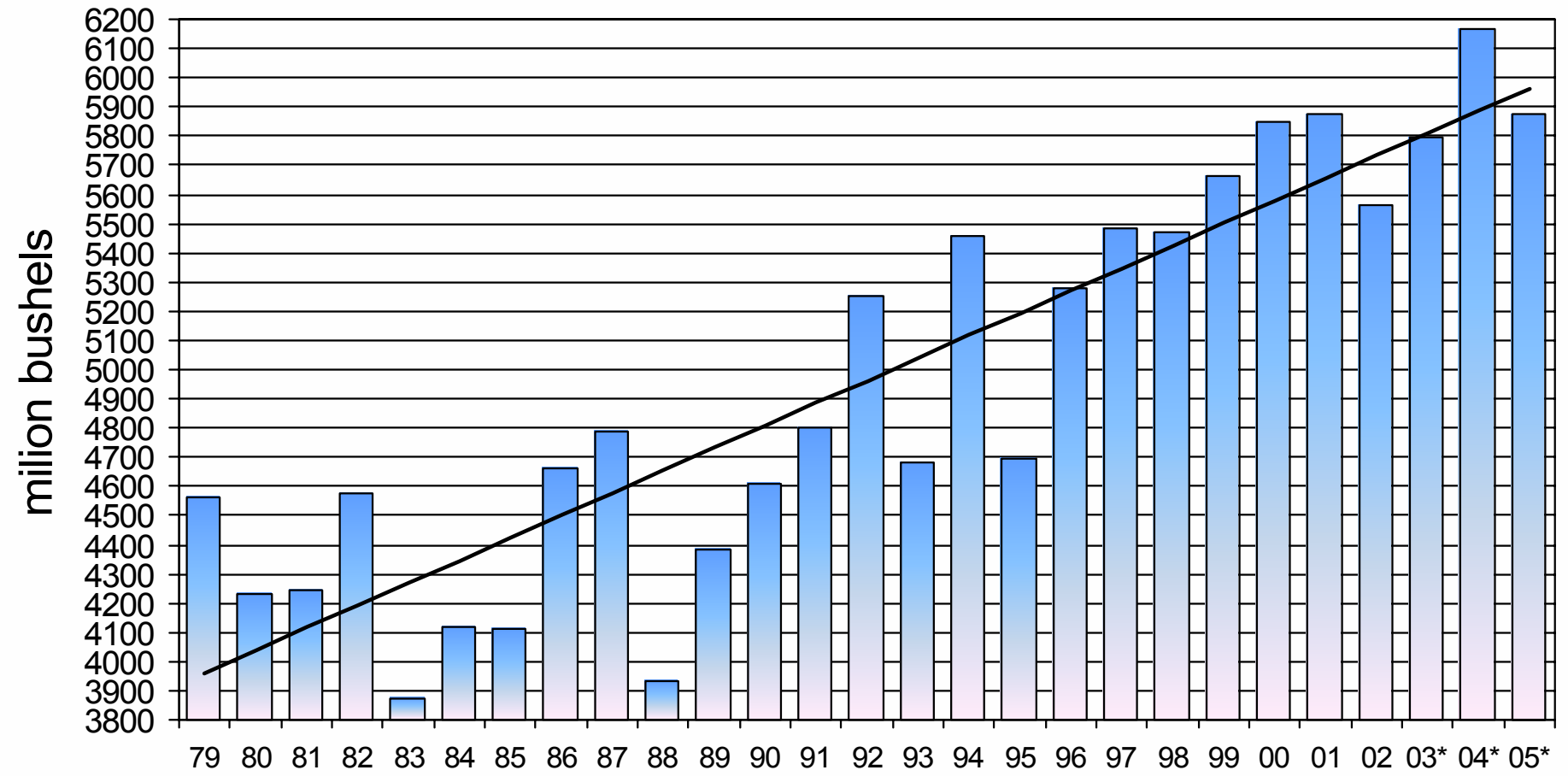
*Darrel Good*



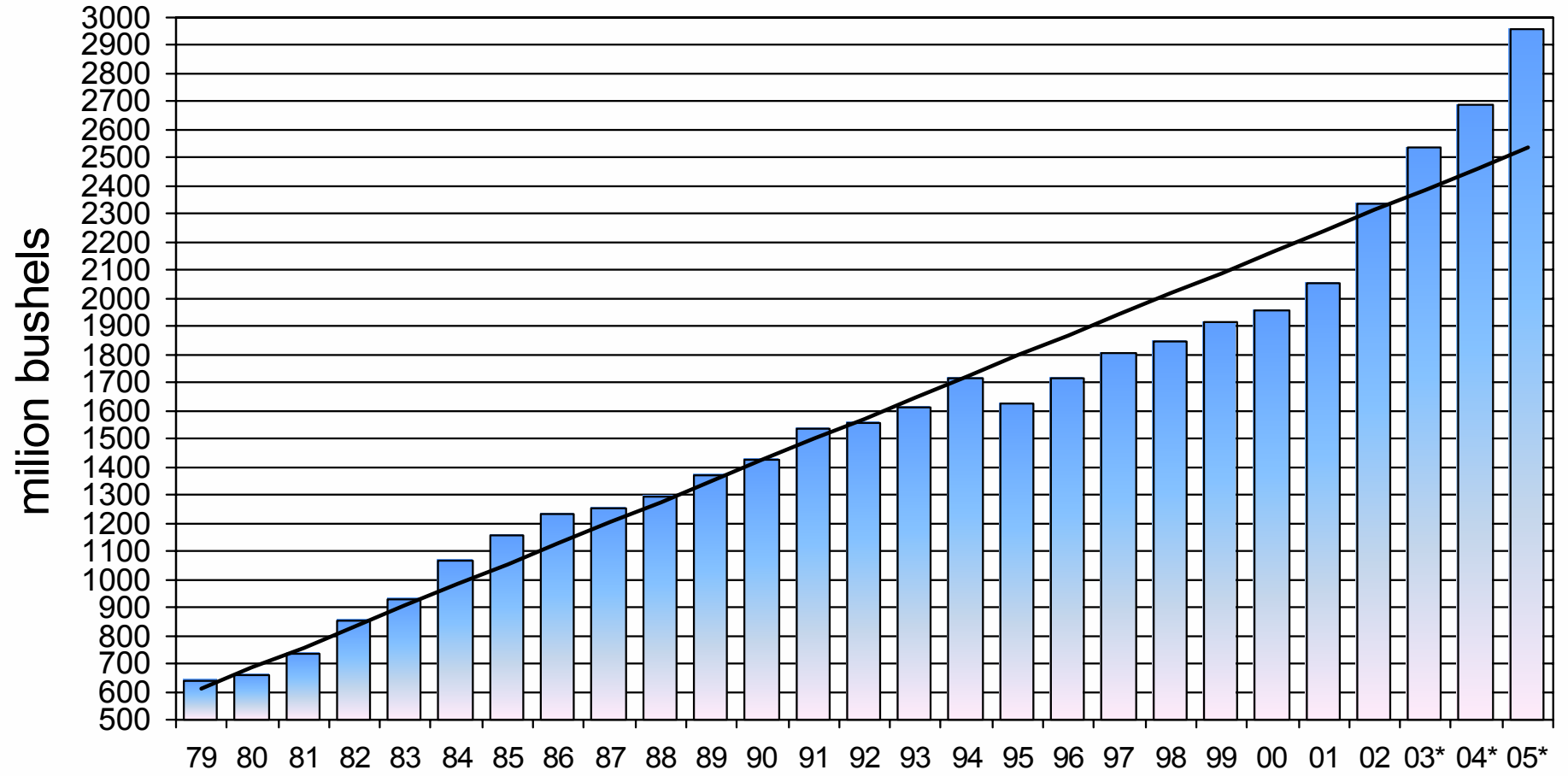
# US Corn Production



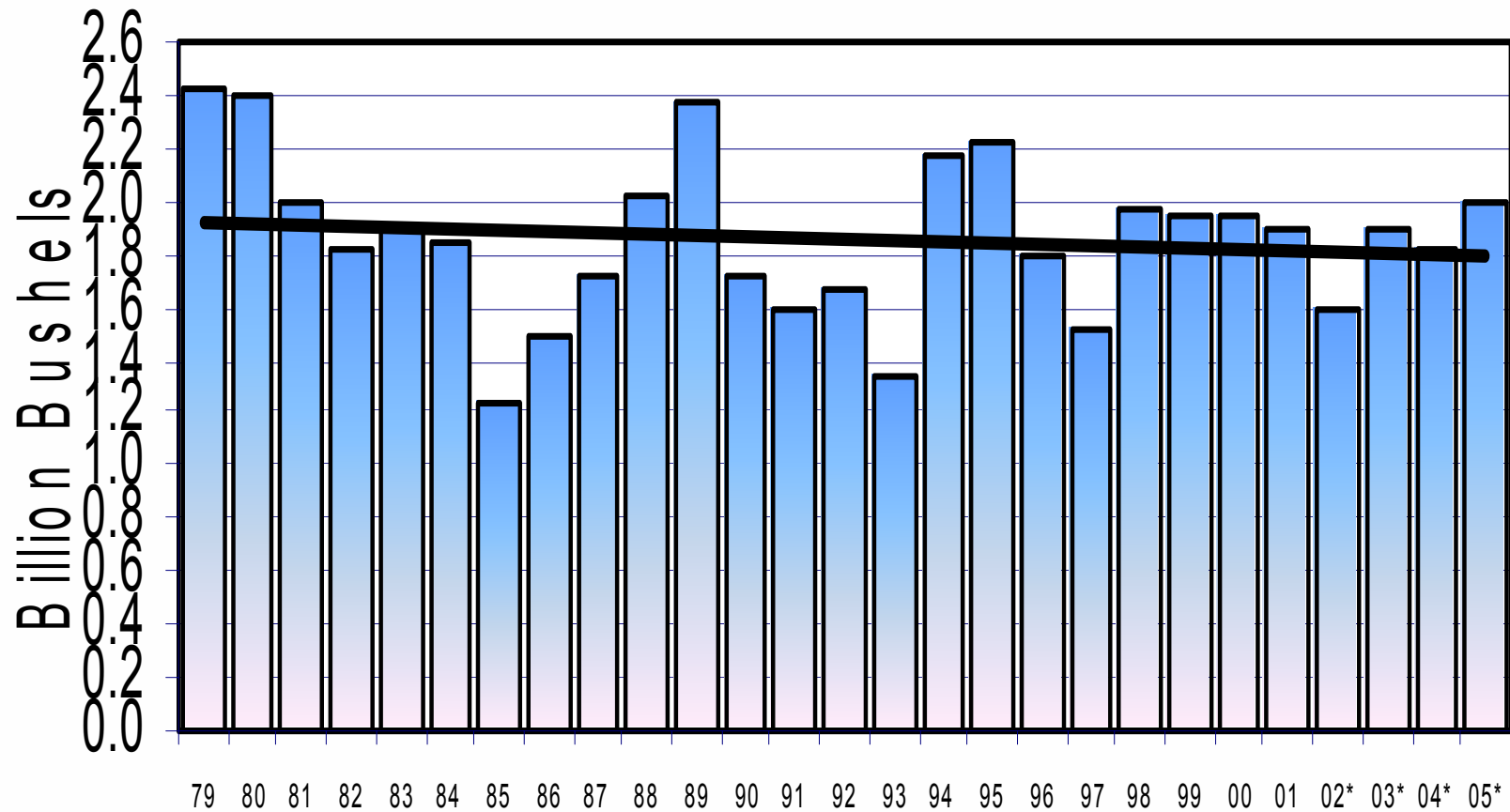
# Feed and Residual Use of U.S. Corn



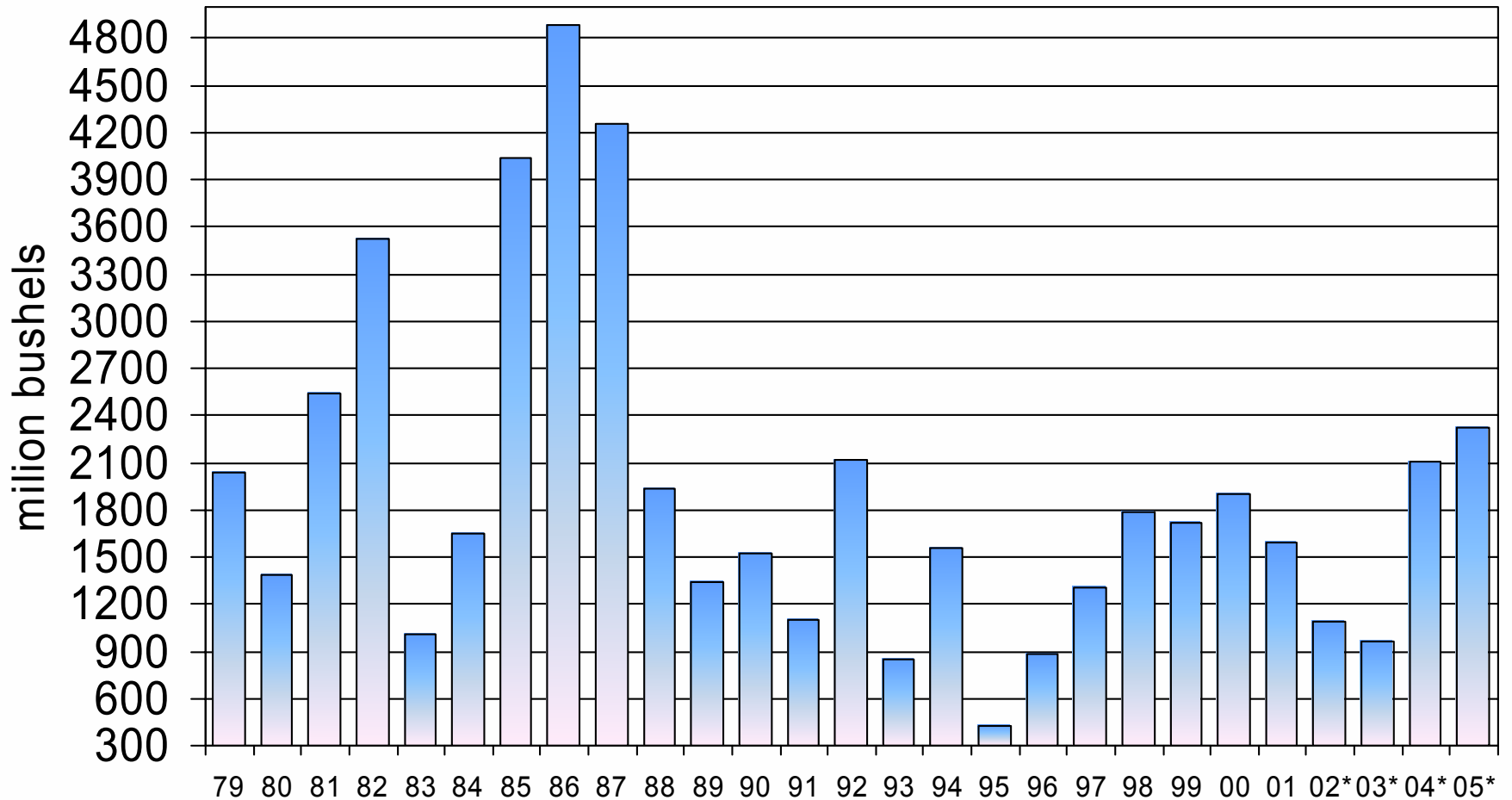
# Food and Industrial Use of U.S. Corn



# US Corn Exports



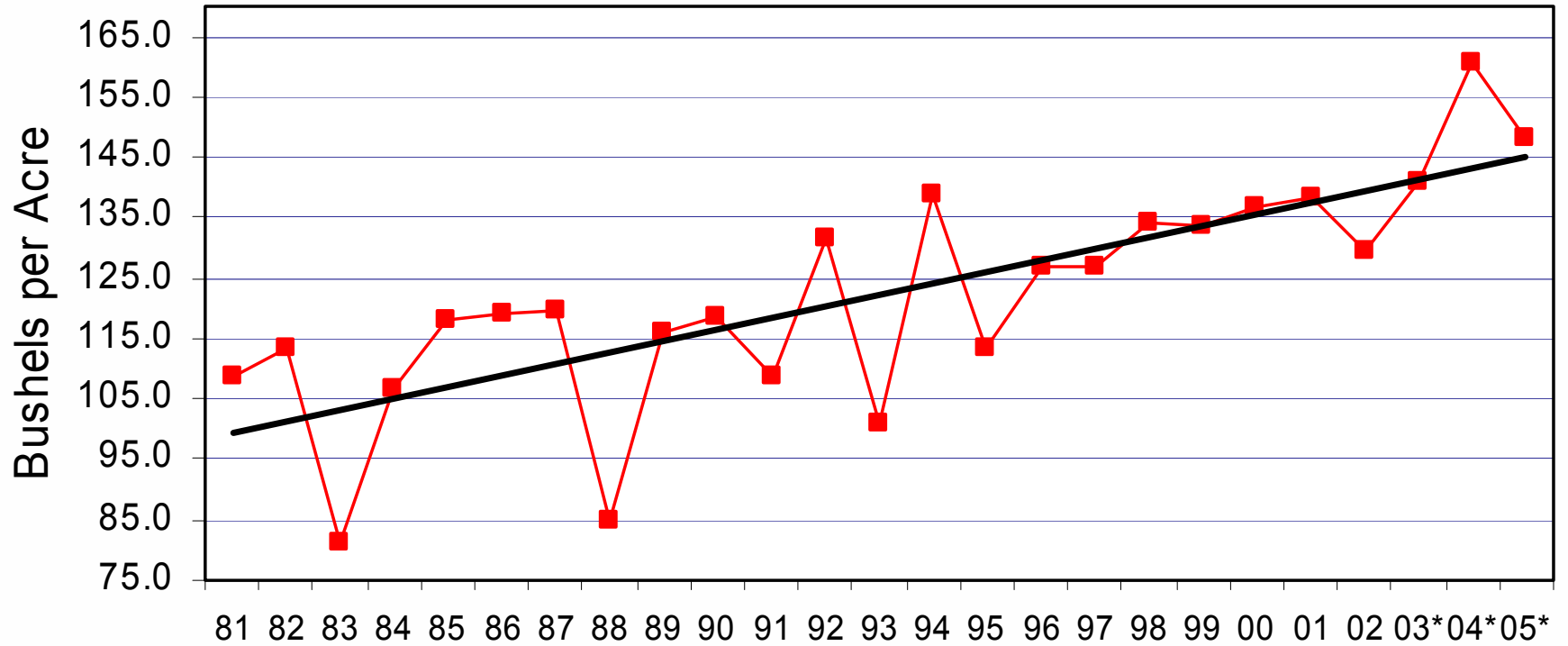
# Ending Stocks of Corn



# US Corn Acres Planted

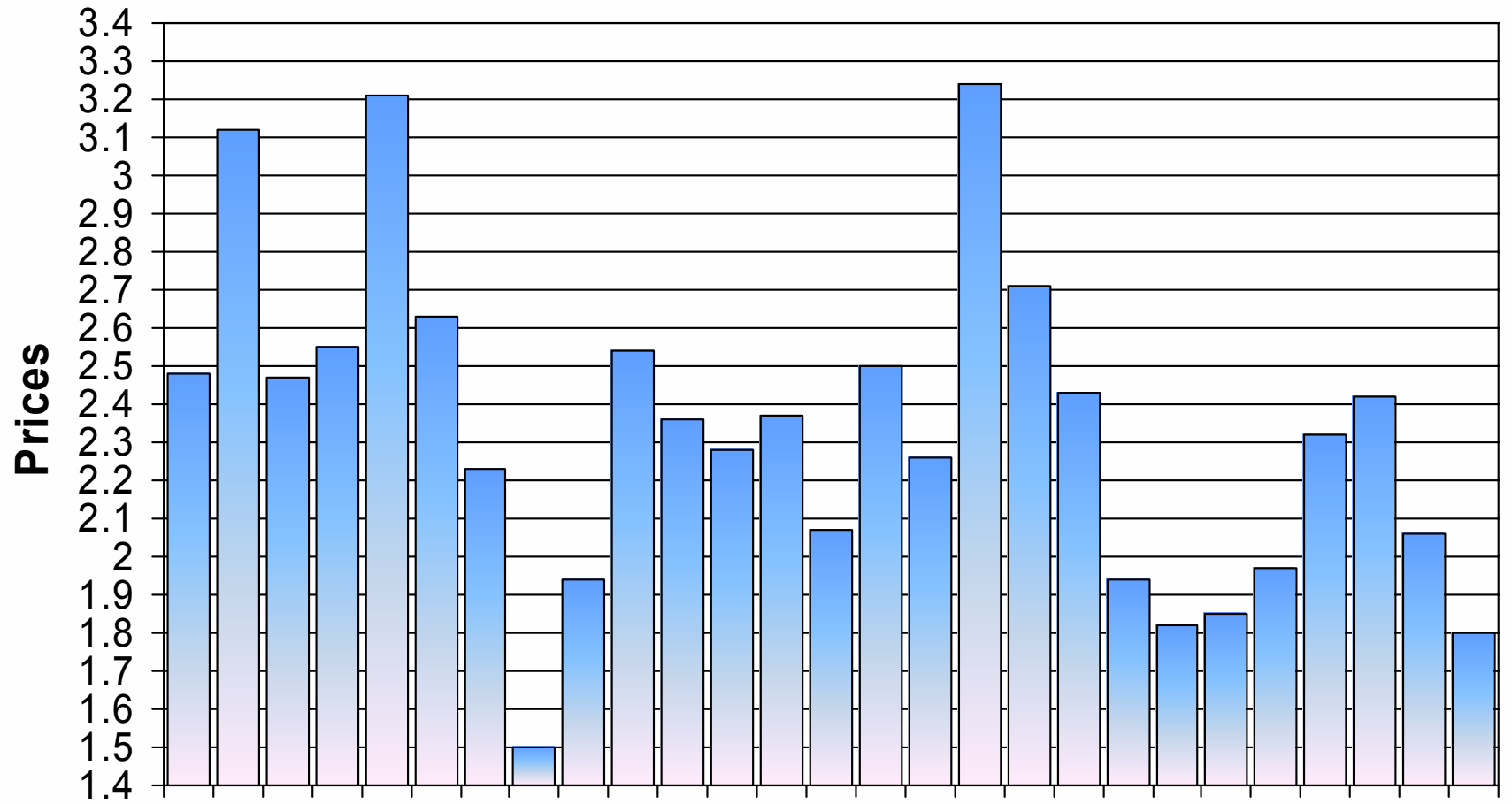


# US Corn Yields



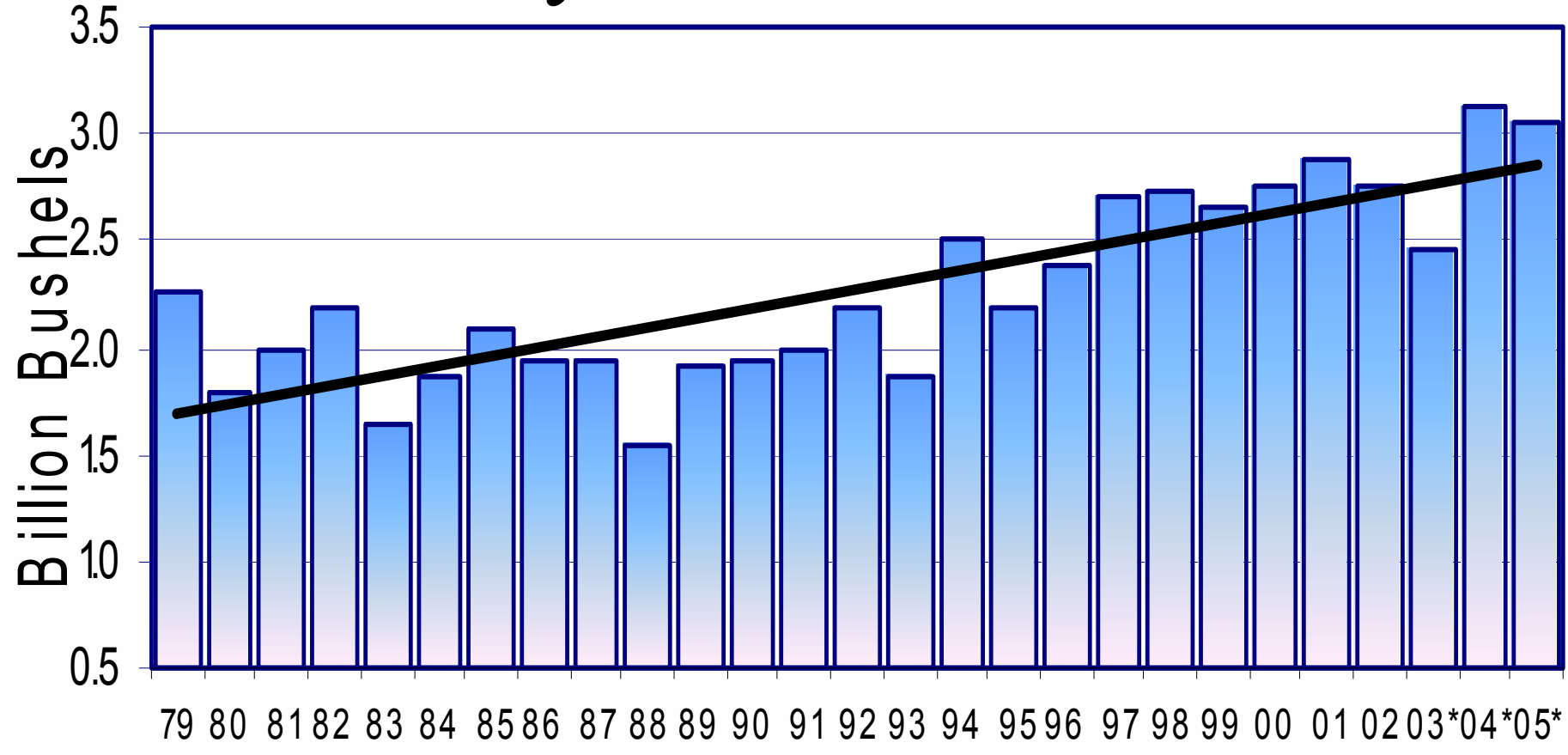


# Average Farm Price of Corn

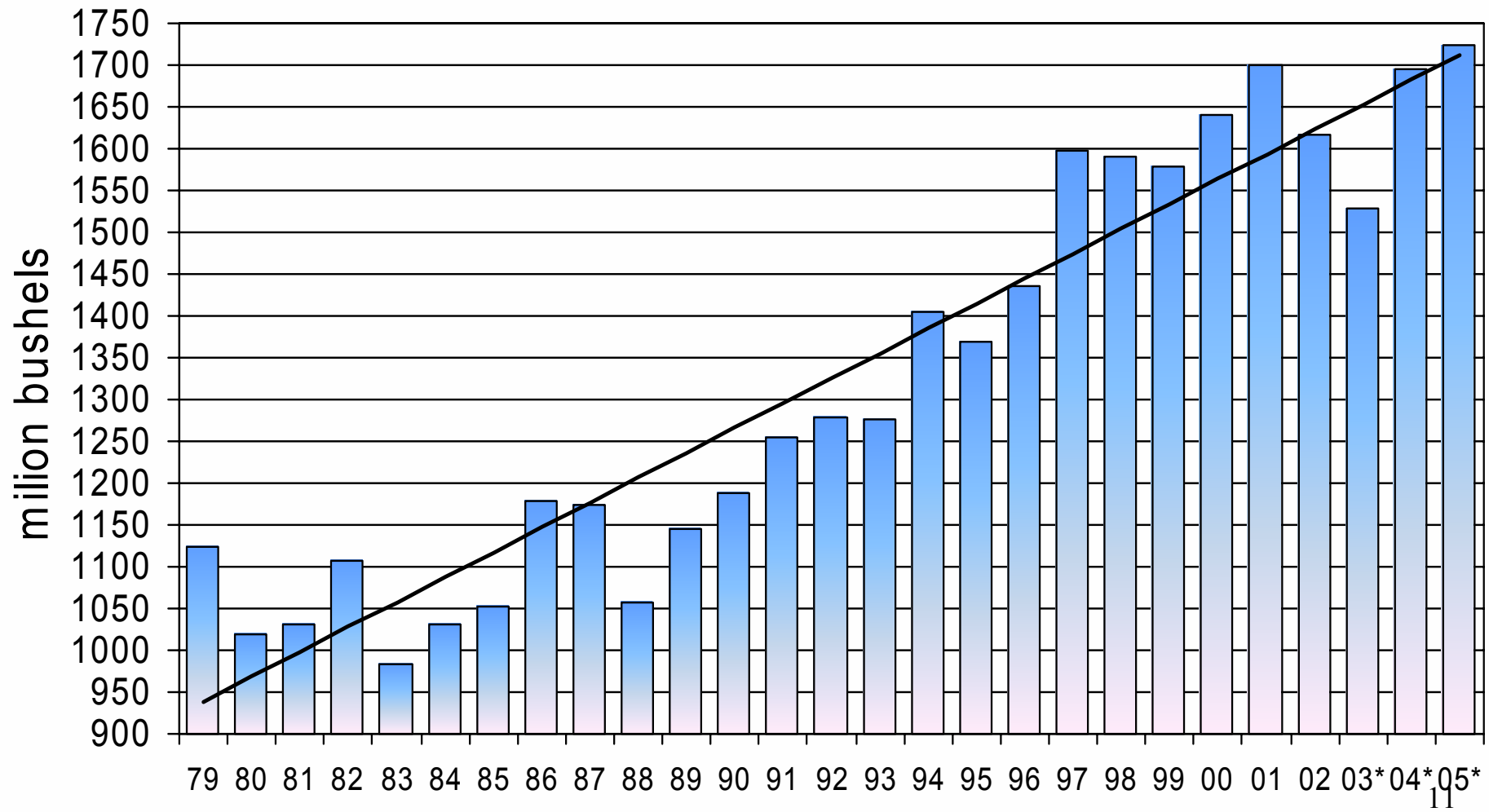


\* projected

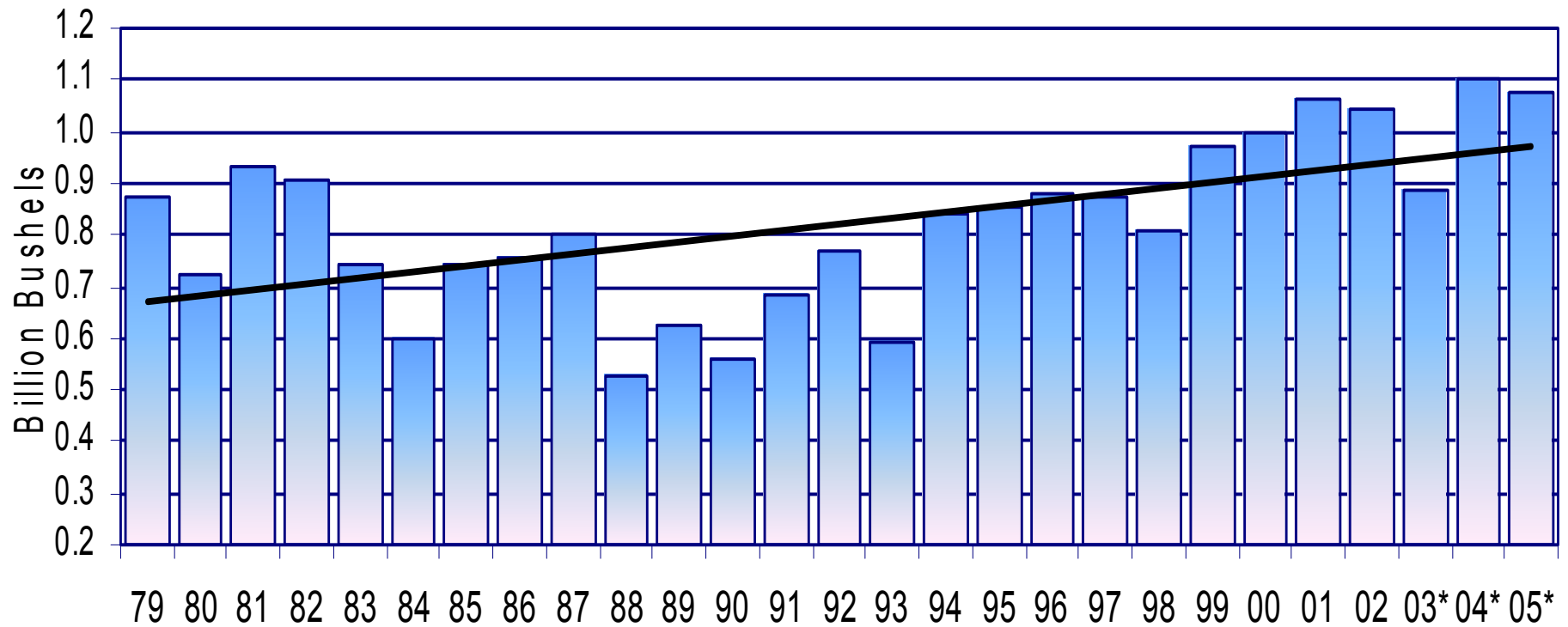
# US Soybean Production



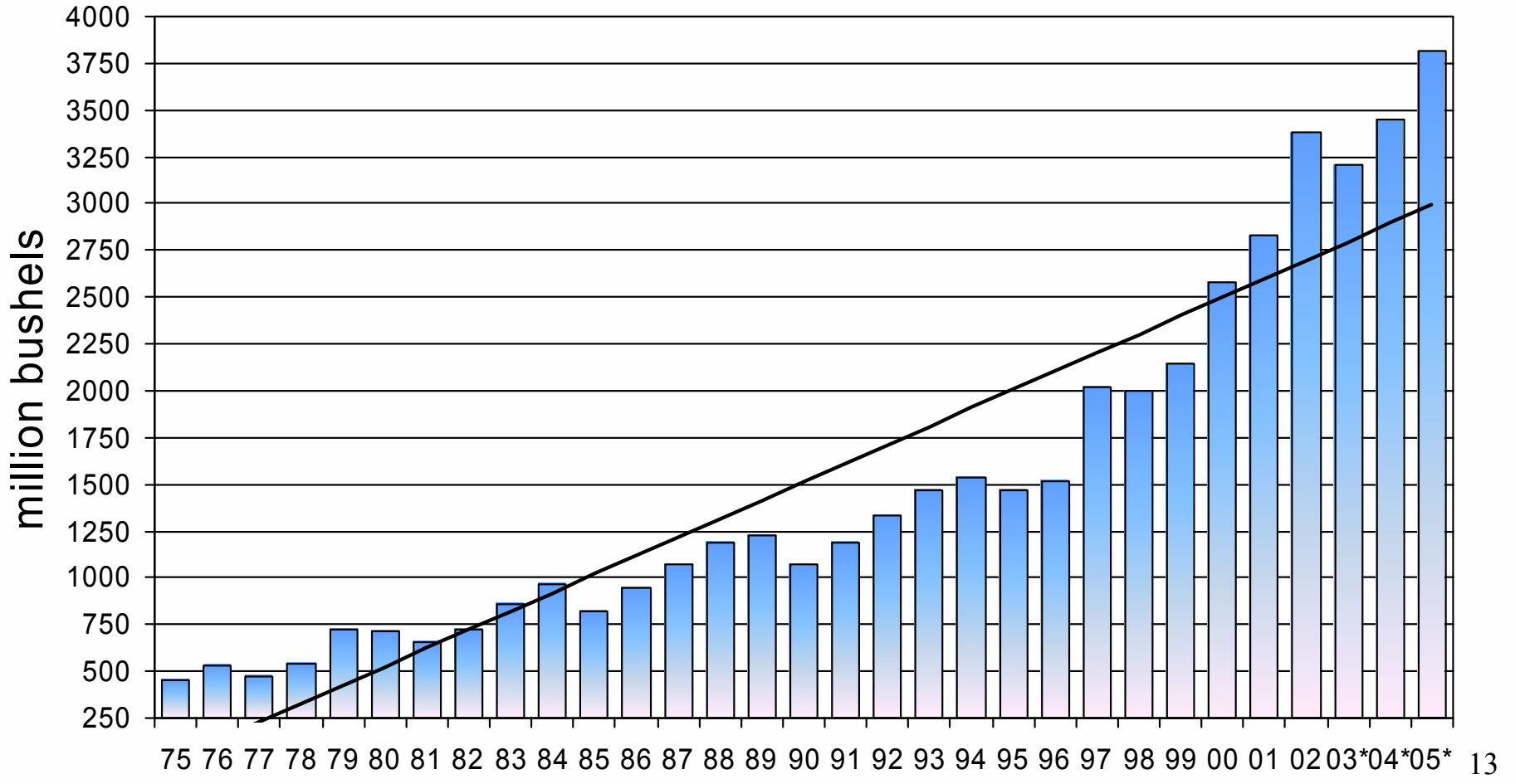
# U.S. Soybean Crush



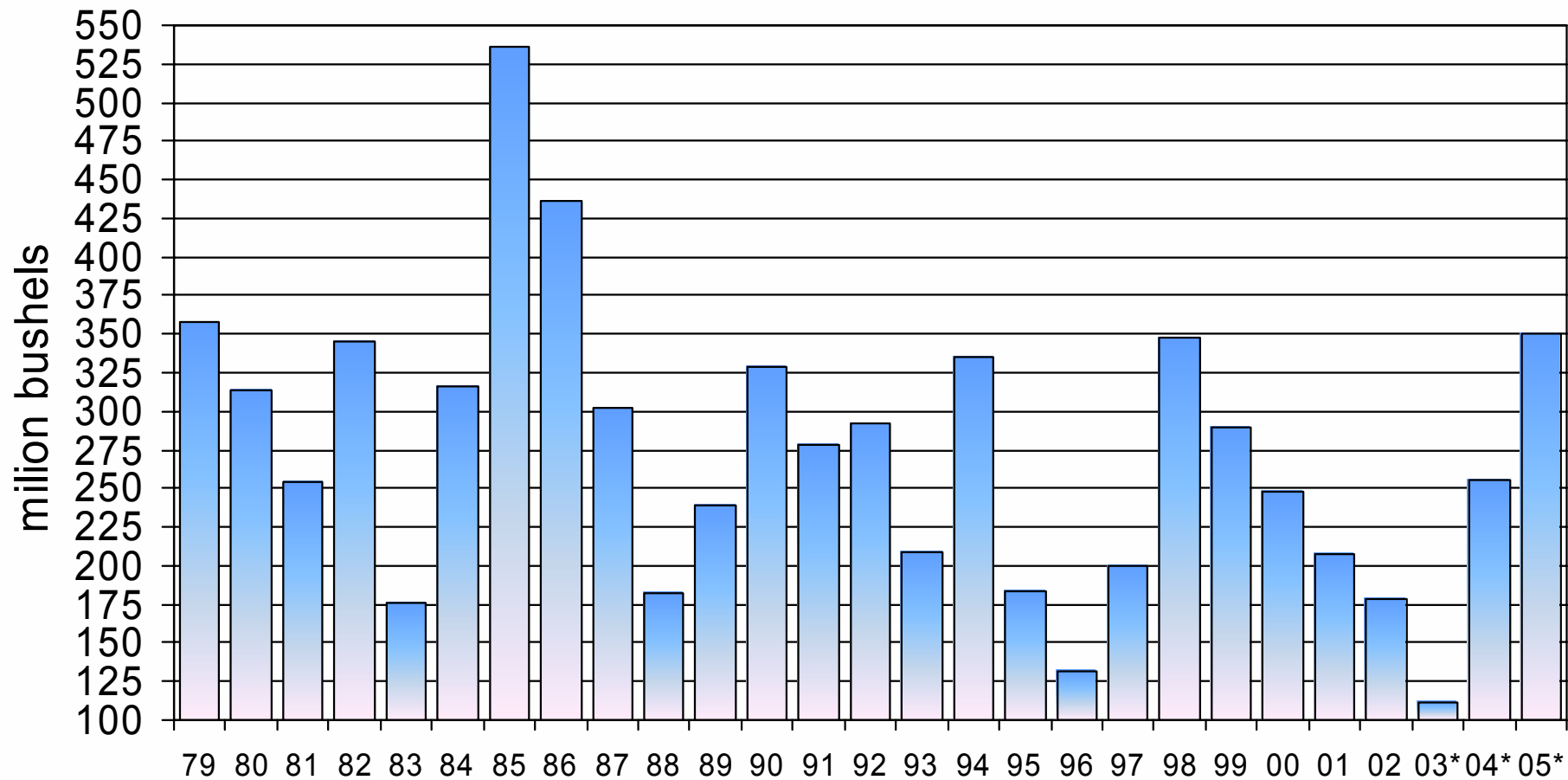
# US Soybean Exports



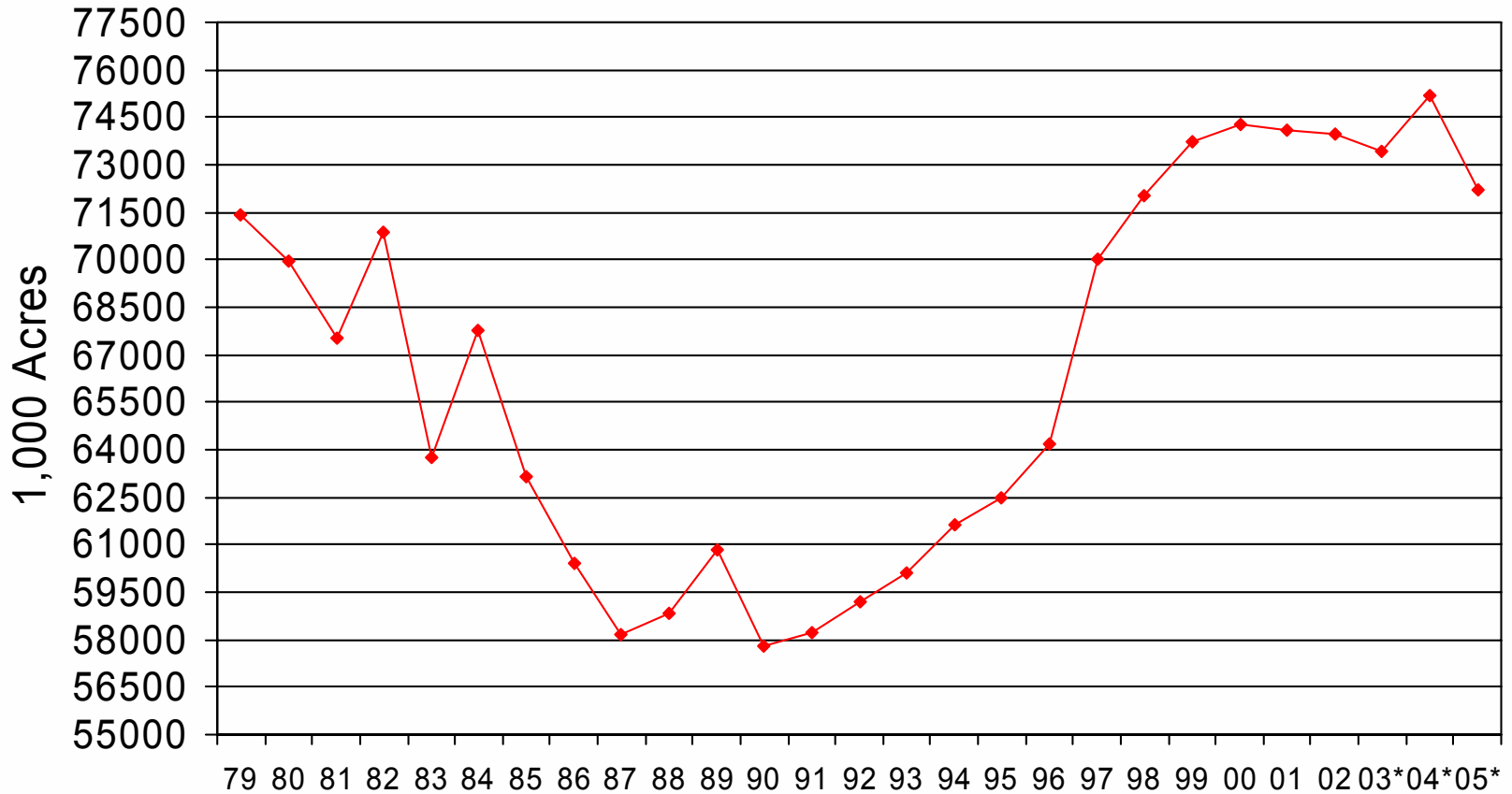
# South American Soybean Production



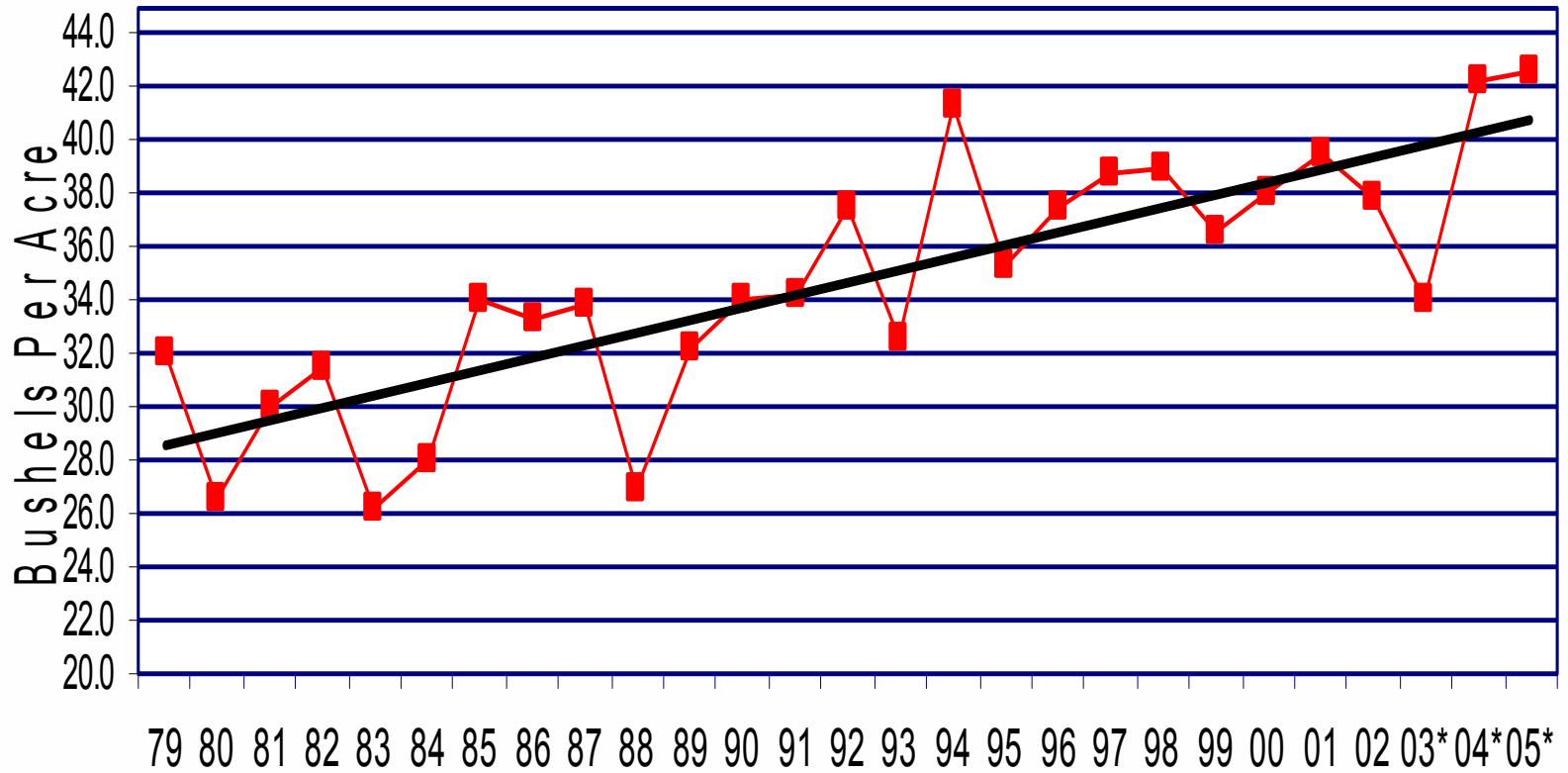
# Ending Stocks of Soybeans



# US Soybean Acres Planted

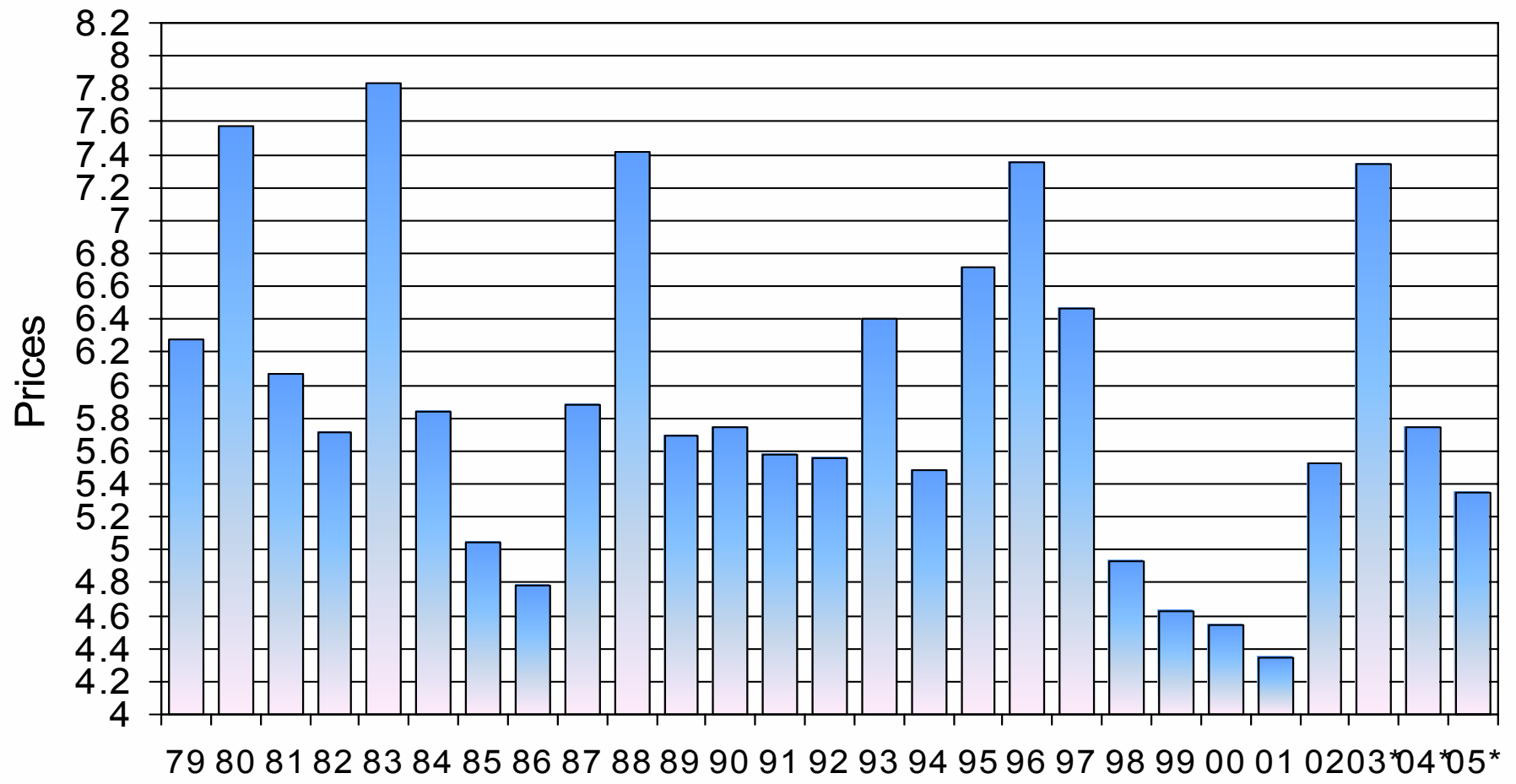


# U.S. Soybean Yields

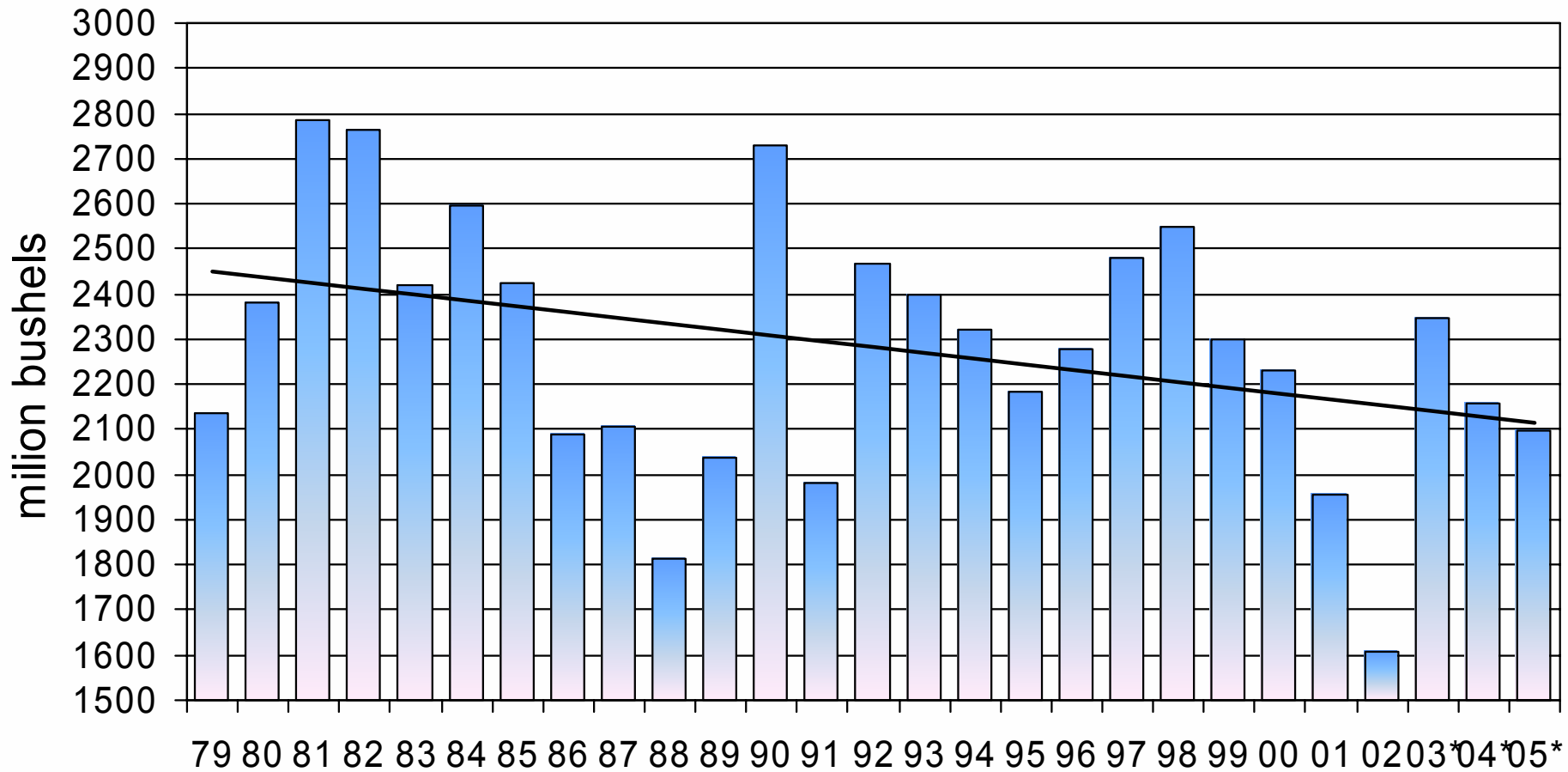




# Average Farm Price of Soybeans



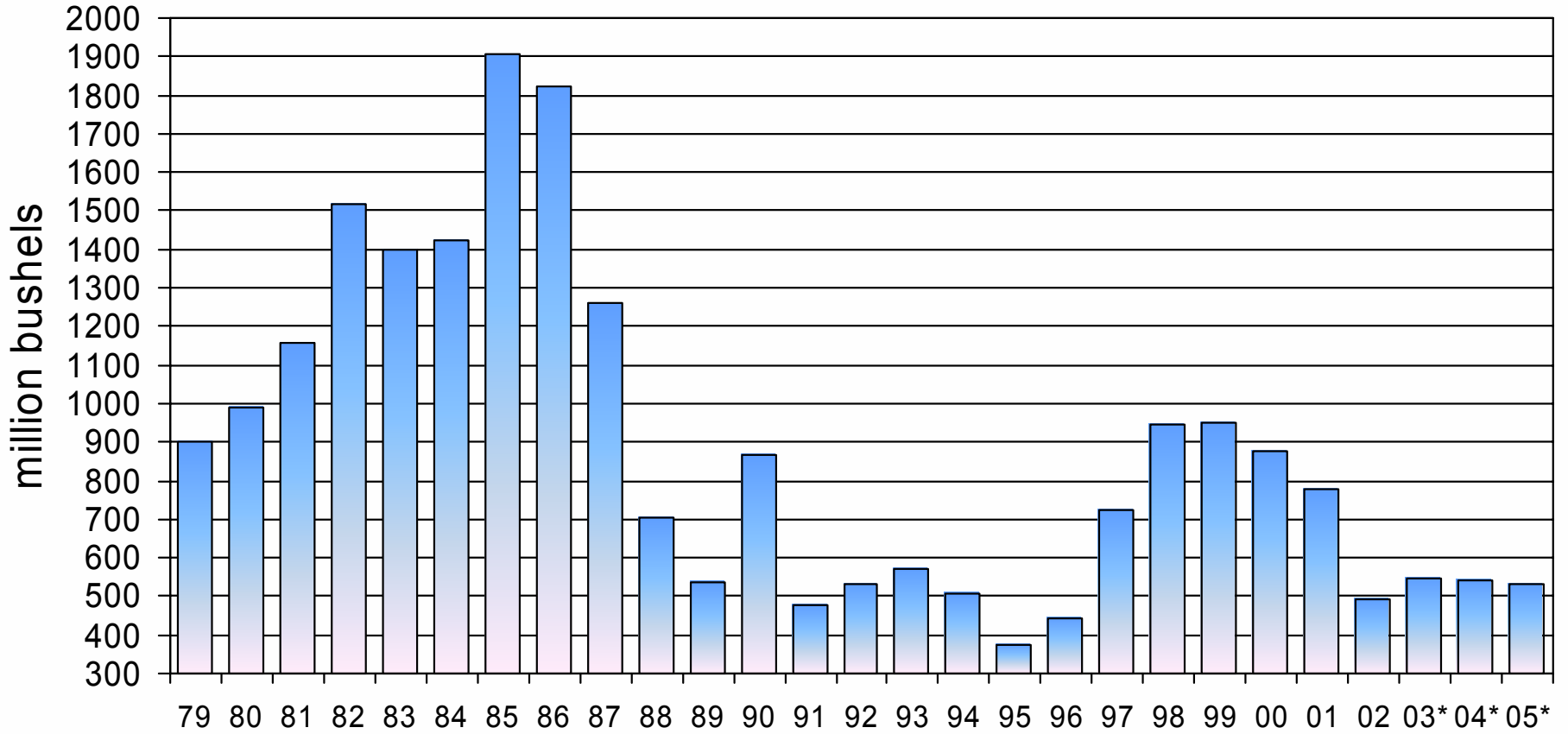
# US Wheat Production



# US Wheat Exports



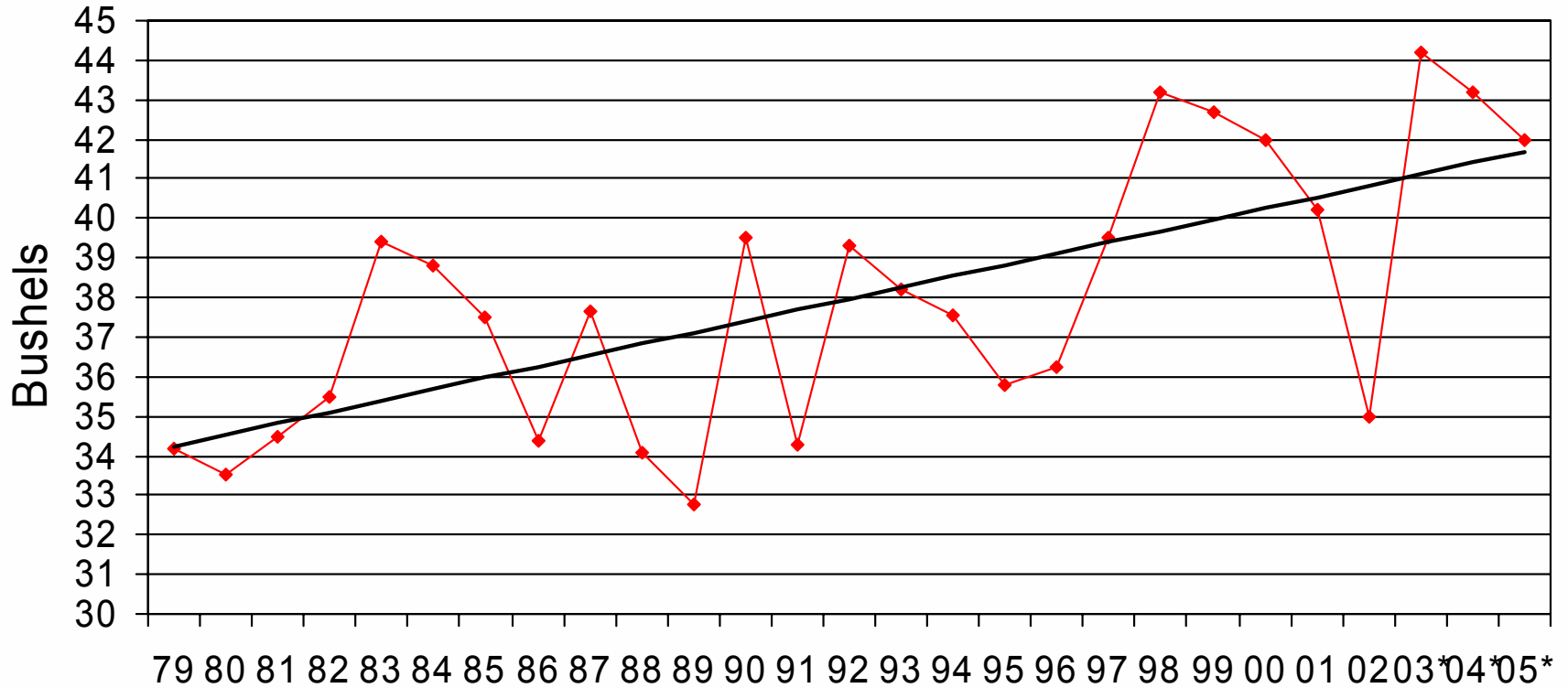
# Ending Stocks of Wheat



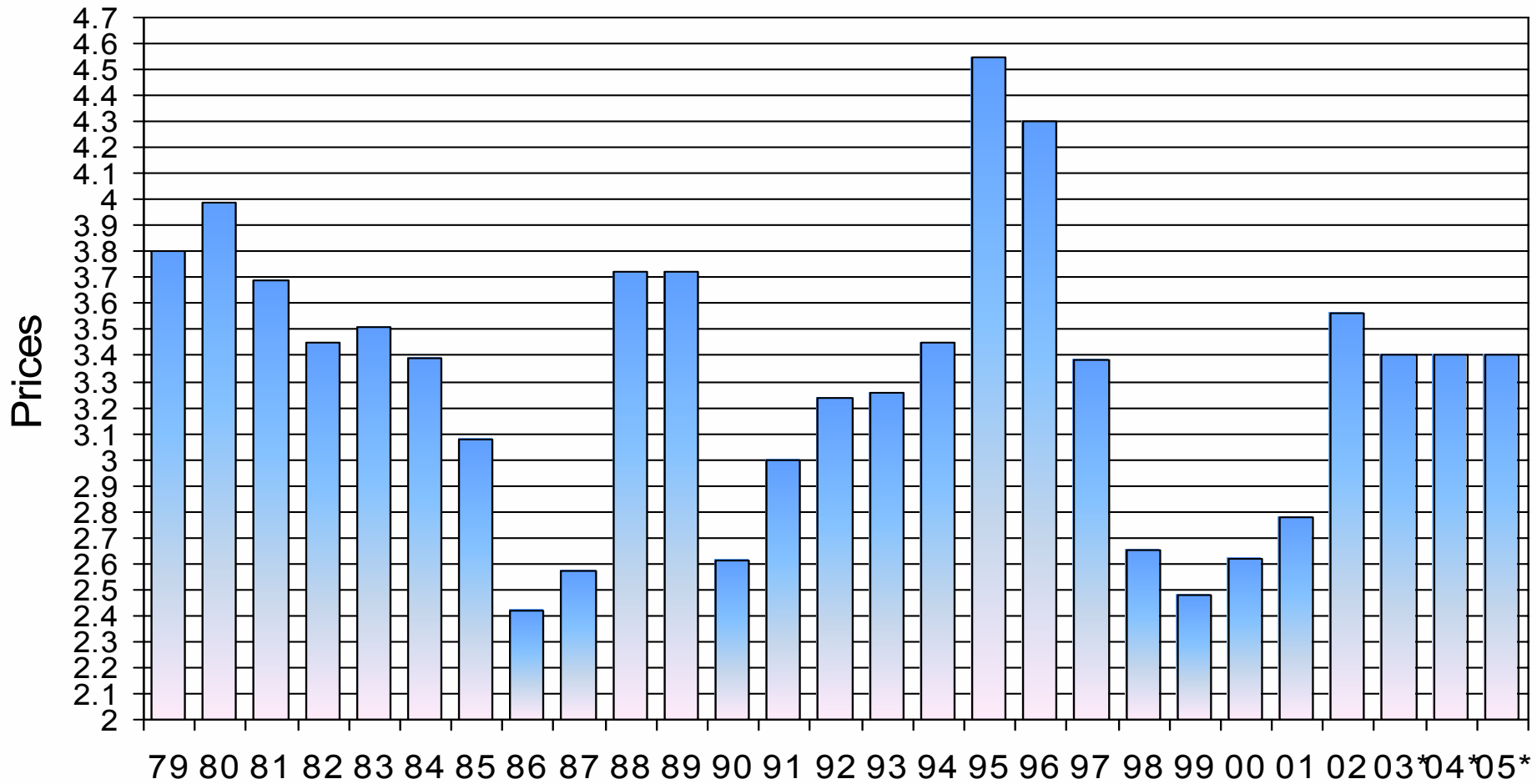
# US Wheat Acres Planted



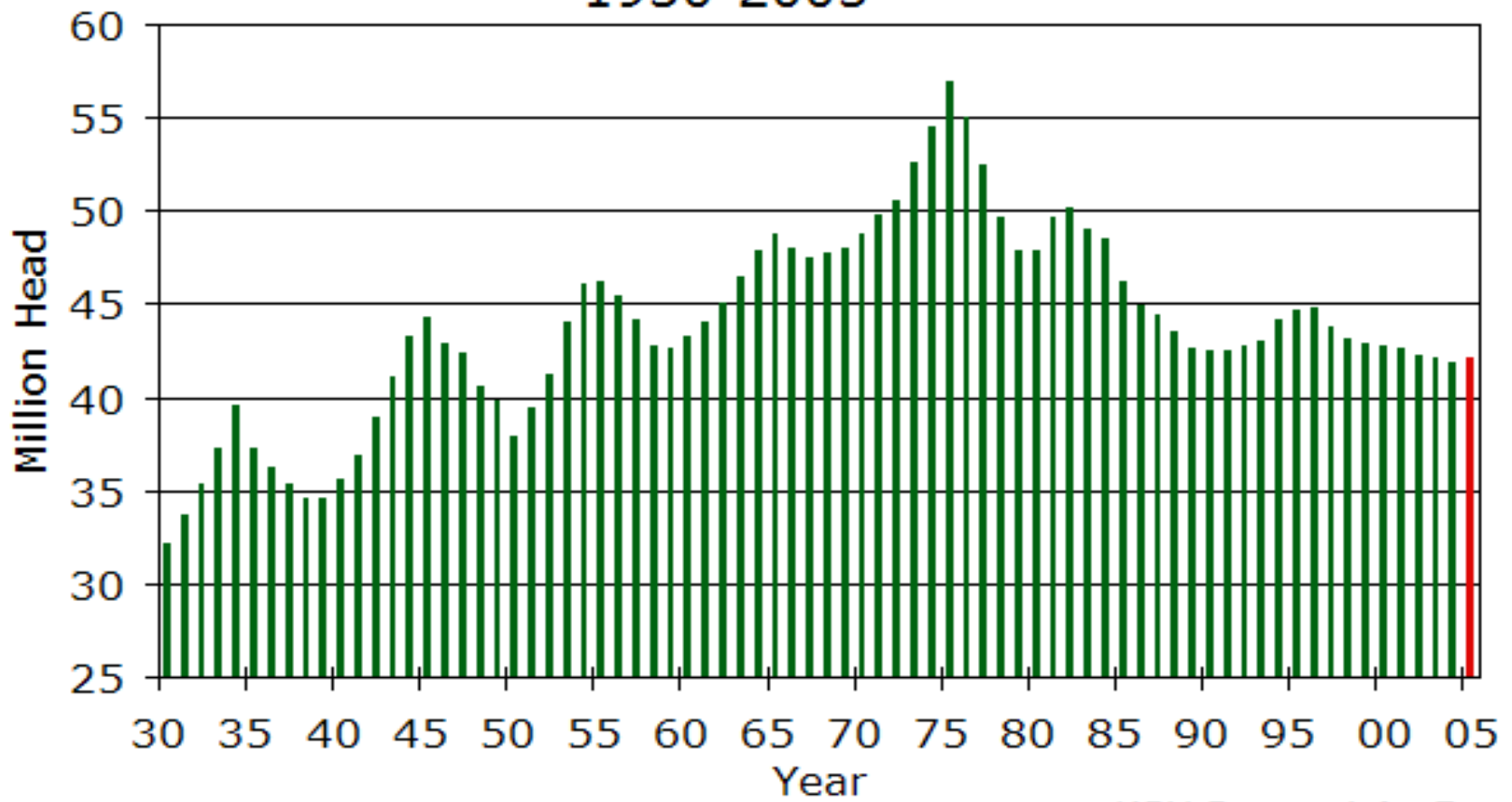
# US Wheat Yield Per Acre



# Average Farm Price of Wheat



## U.S. Cow Inventory 1930-2005

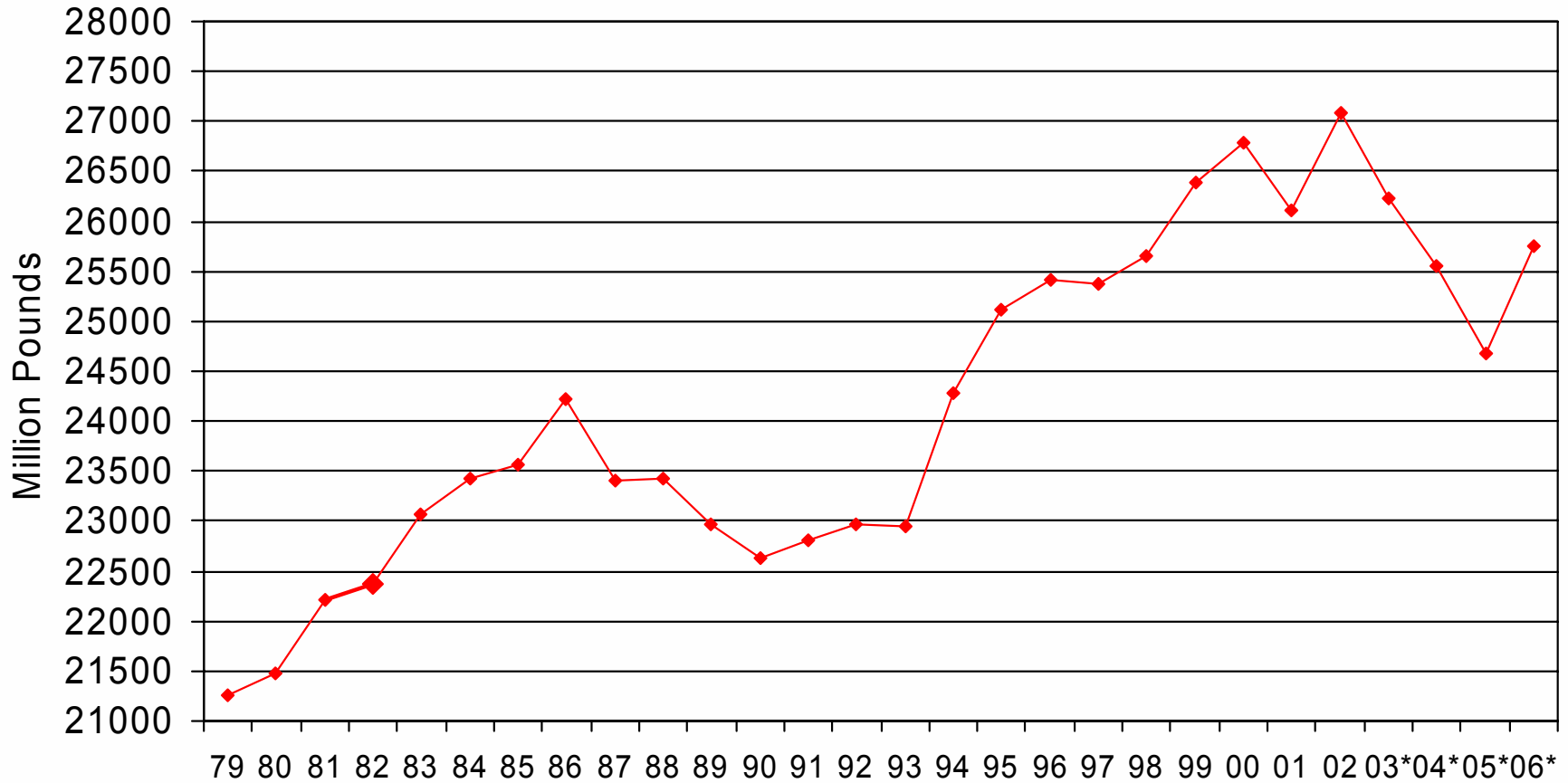


Source: USDA & K-State Research & Extension

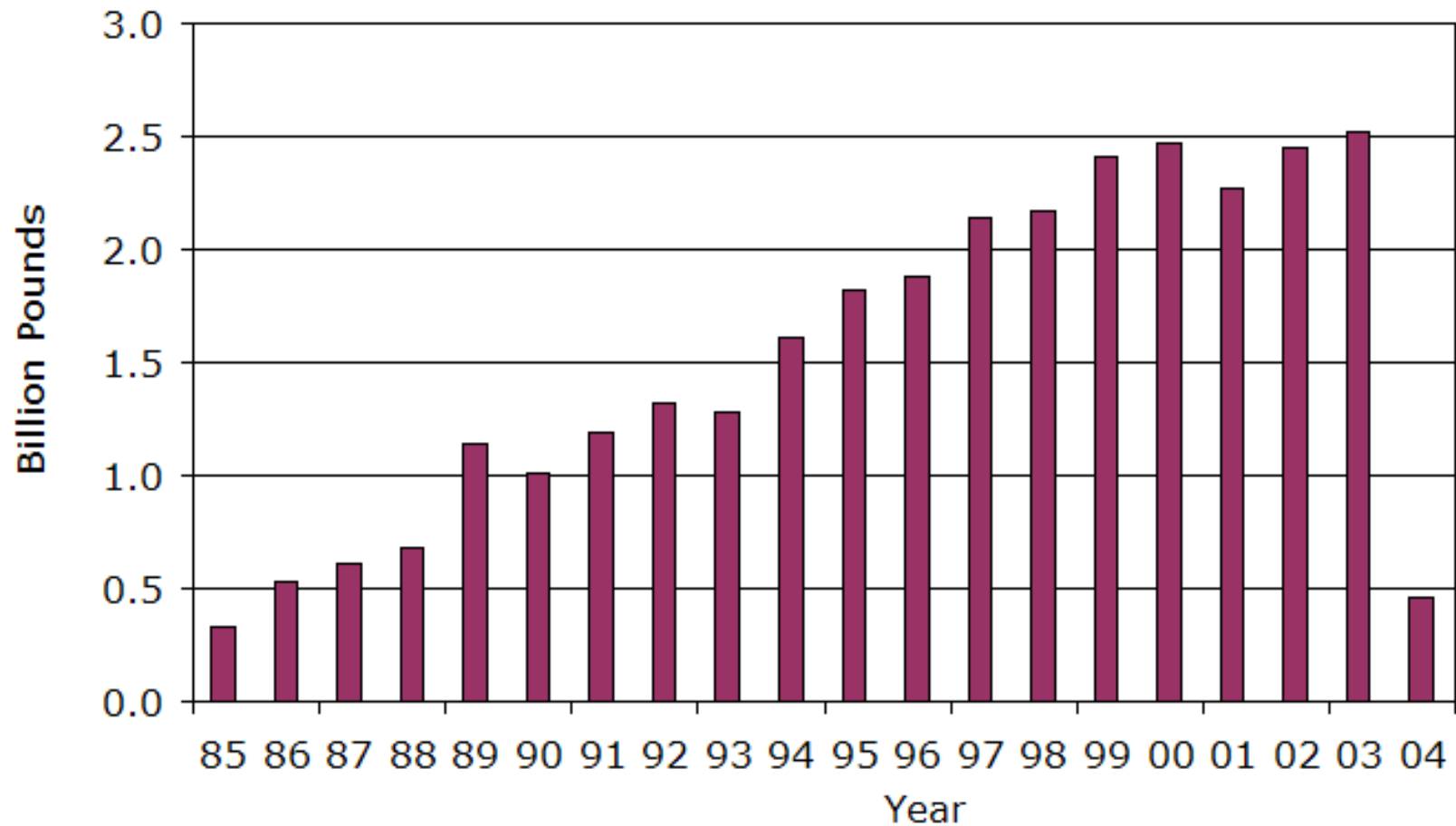
KSU Dept. of Ag Econ  
[www.agmanager.info](http://www.agmanager.info)



# US Commercial Beef Production

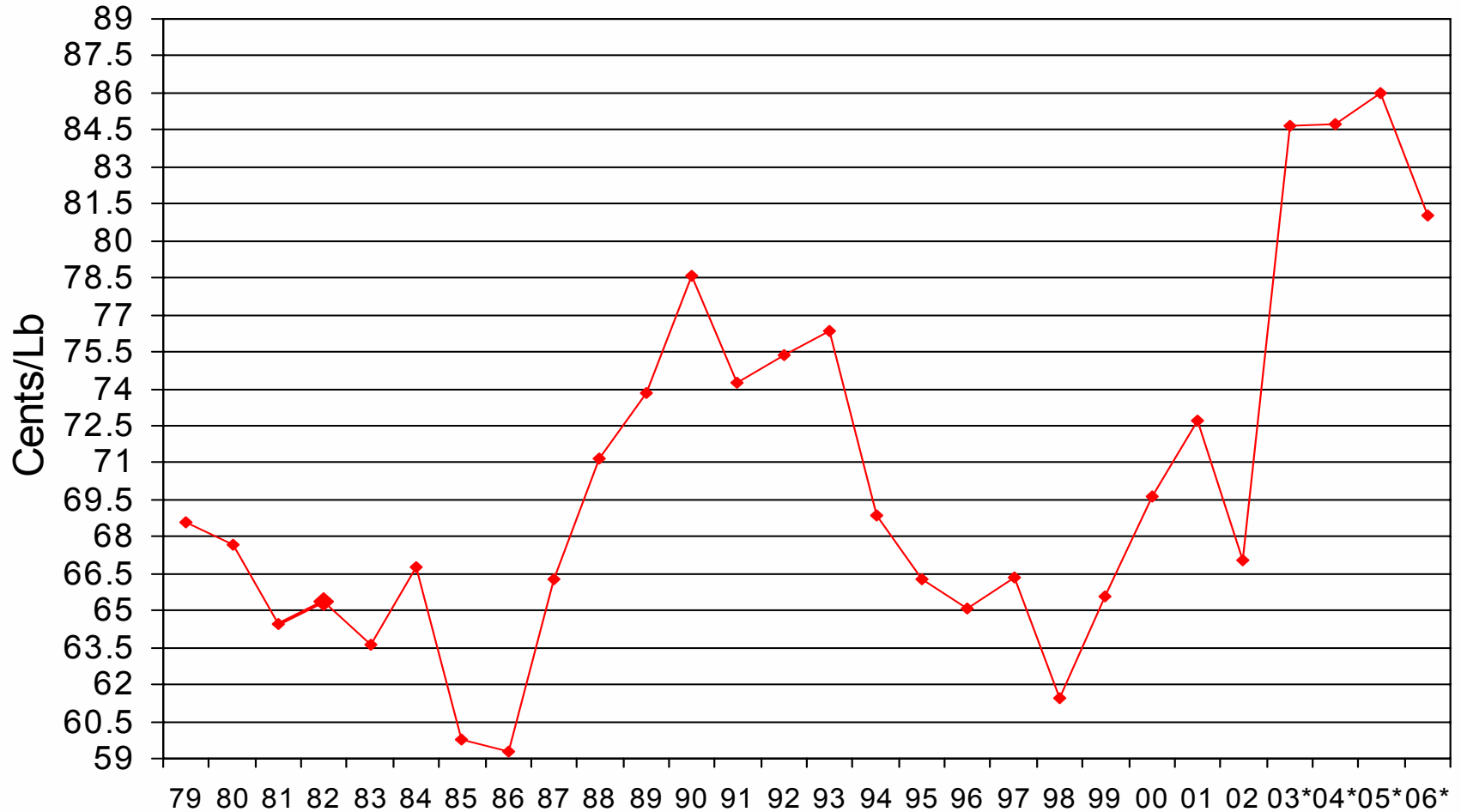


## Annual U.S. Beef Exports



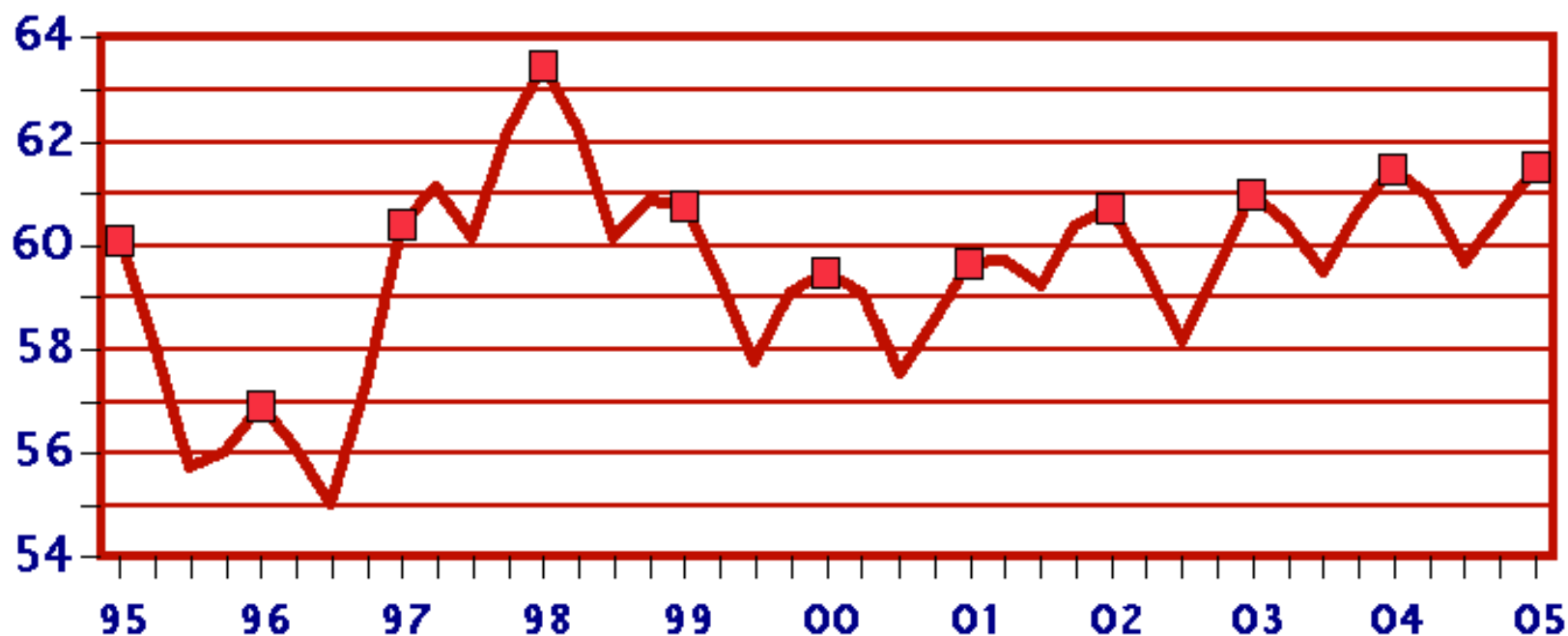
Source: USDA & K-State Research & Extension

# Slaughter Steer Price



## U.S. Quarterly Hogs and Pigs Inventory September 1

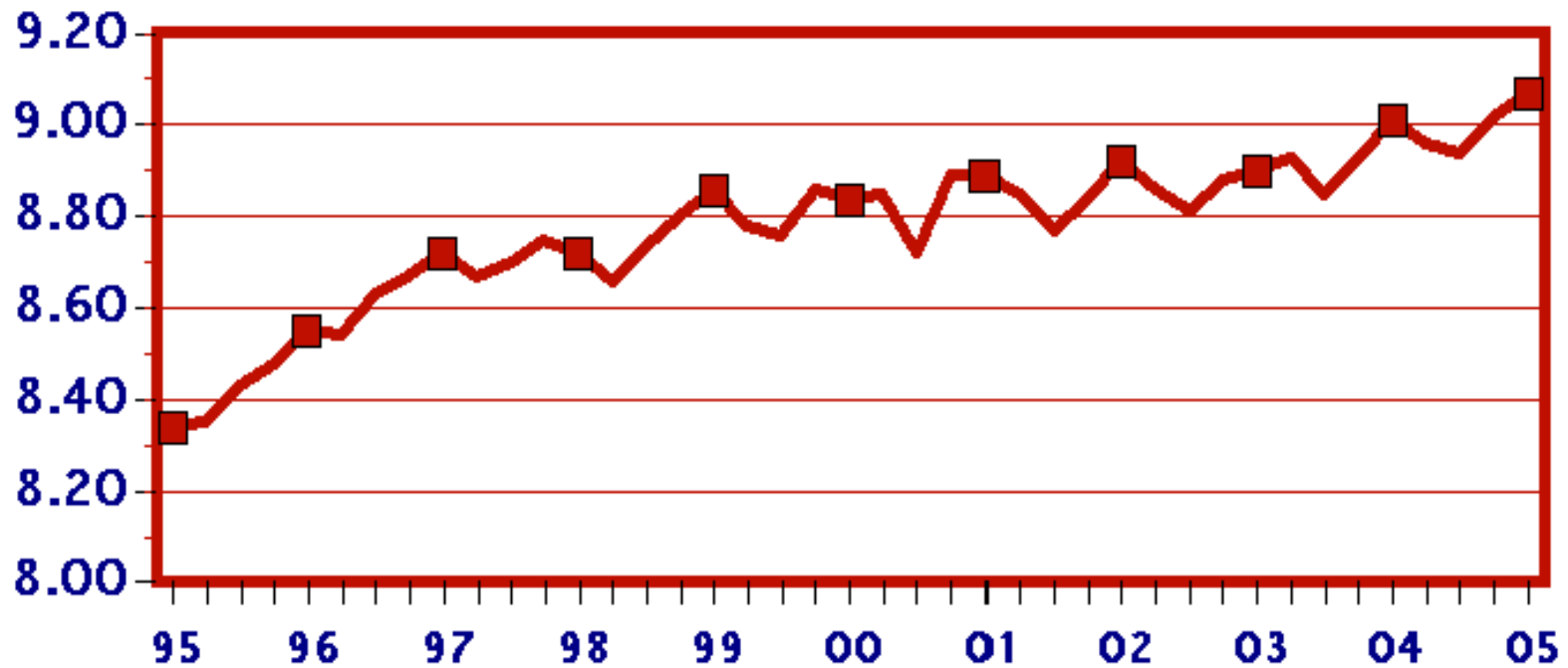
Million Head



USDA-NASS  
9.30.2005

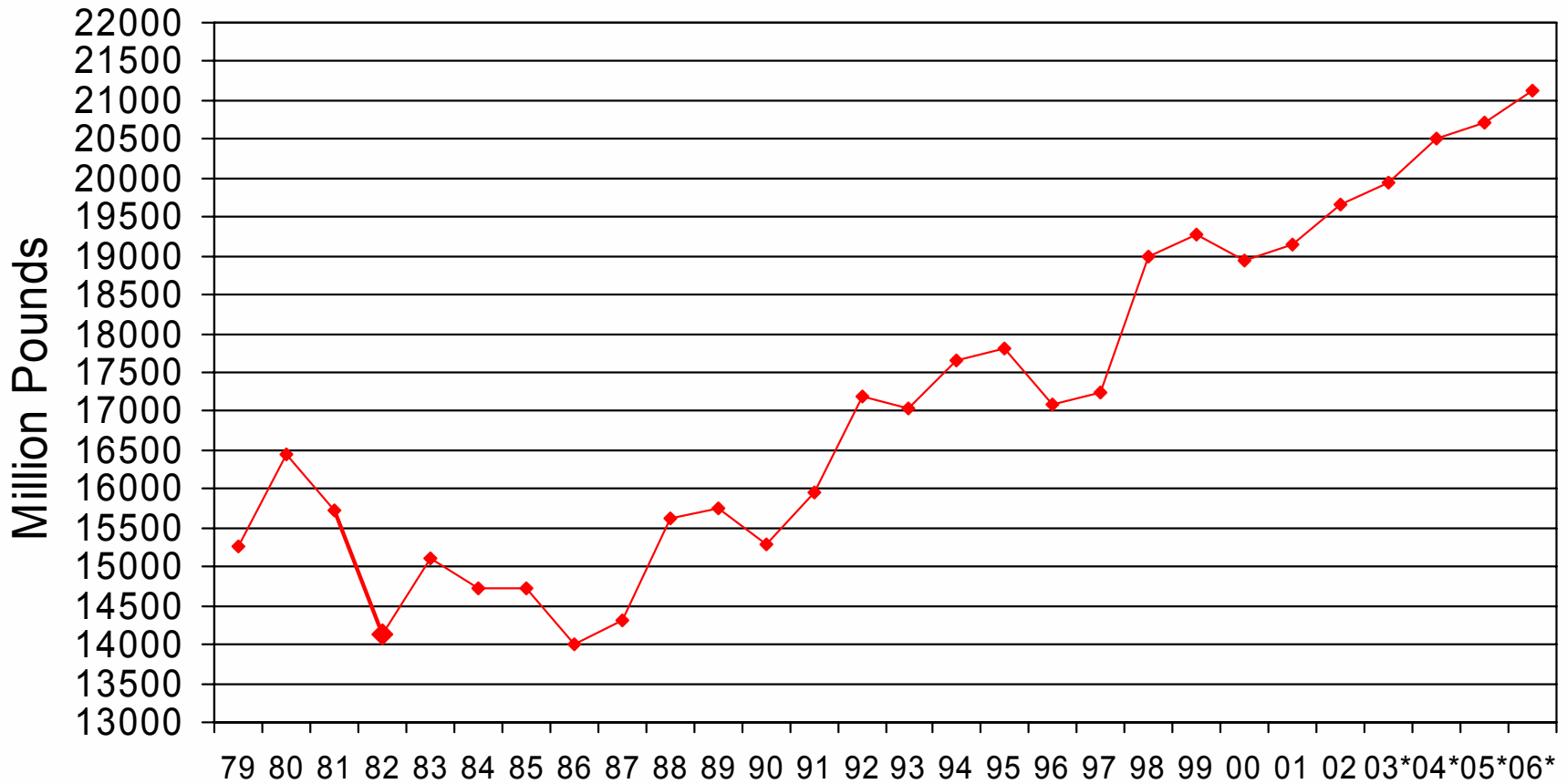
## U.S. Quarterly Litter Rate June-August

Number Head

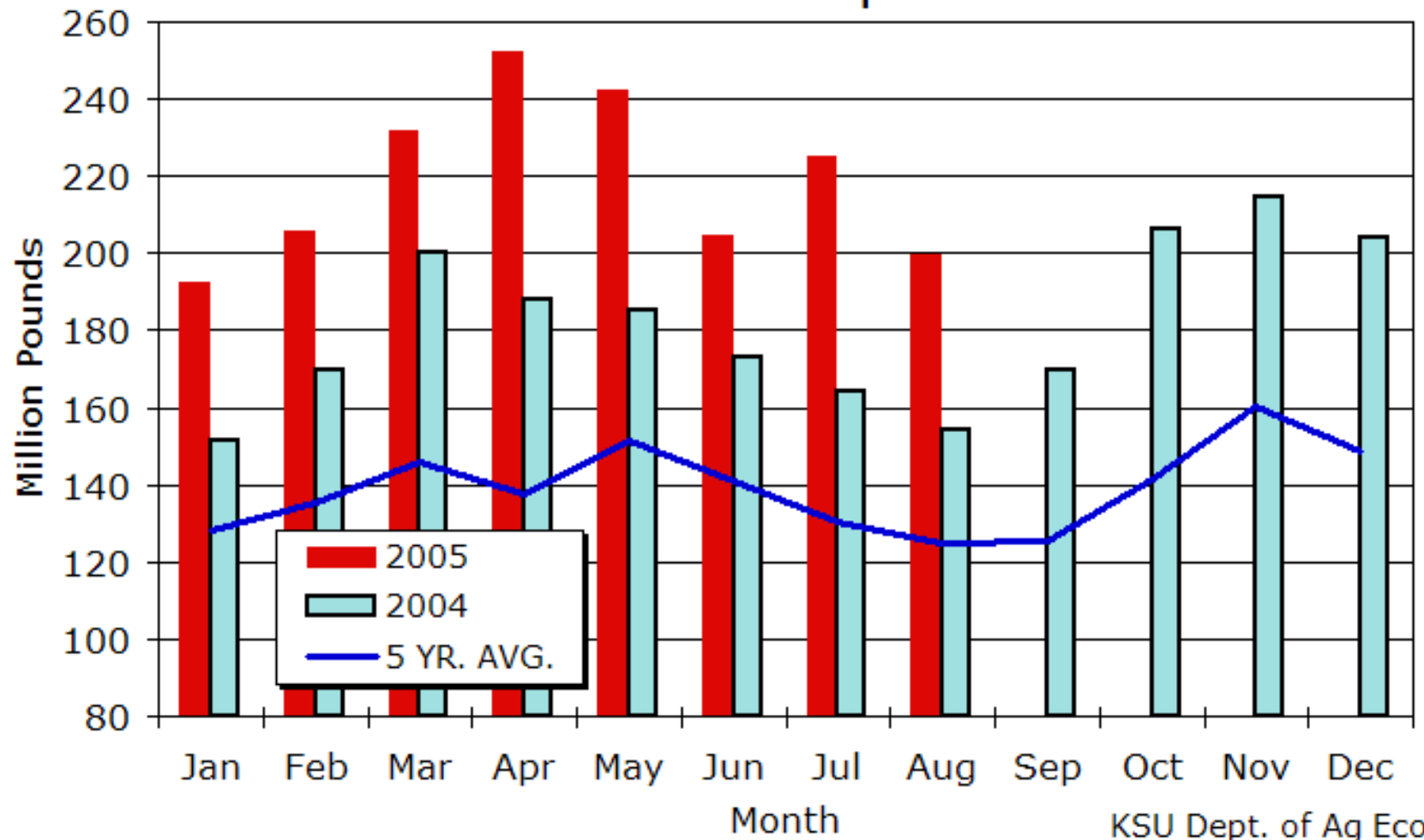


USDA-NASS  
9-30-2005

# US Commercial Pork Production



# U.S. Pork Exports



Source: USDA & KSU

KSU Dept. of Ag Econ  
[www.agmanager.info](http://www.agmanager.info)

# Hog Prices (Barrows and Gilts, U.S.)

