



# Crop and Livestock Price Prospects for 2012

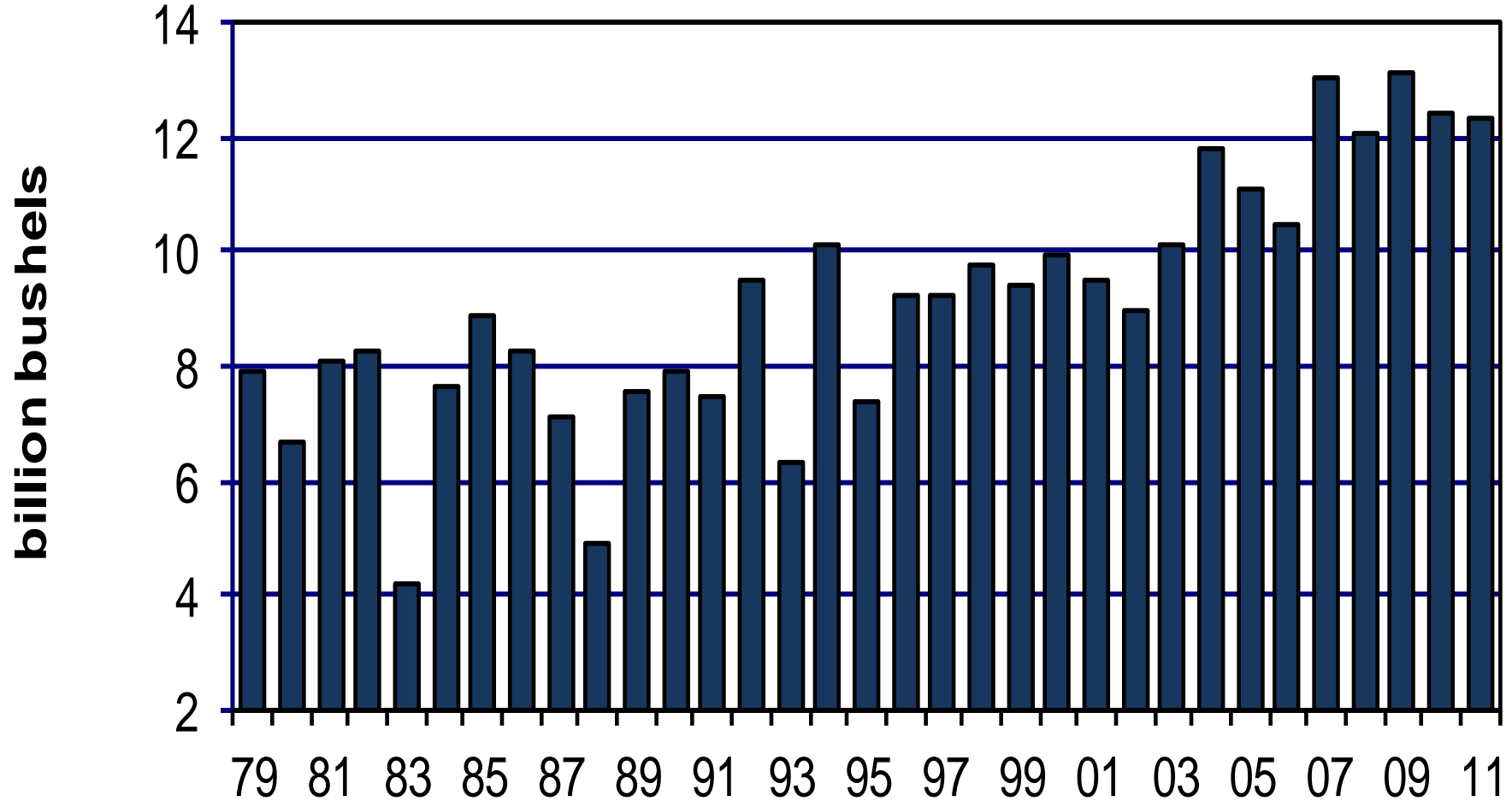
Darrel Good  
d-good@illinois.edu  
University of Illinois



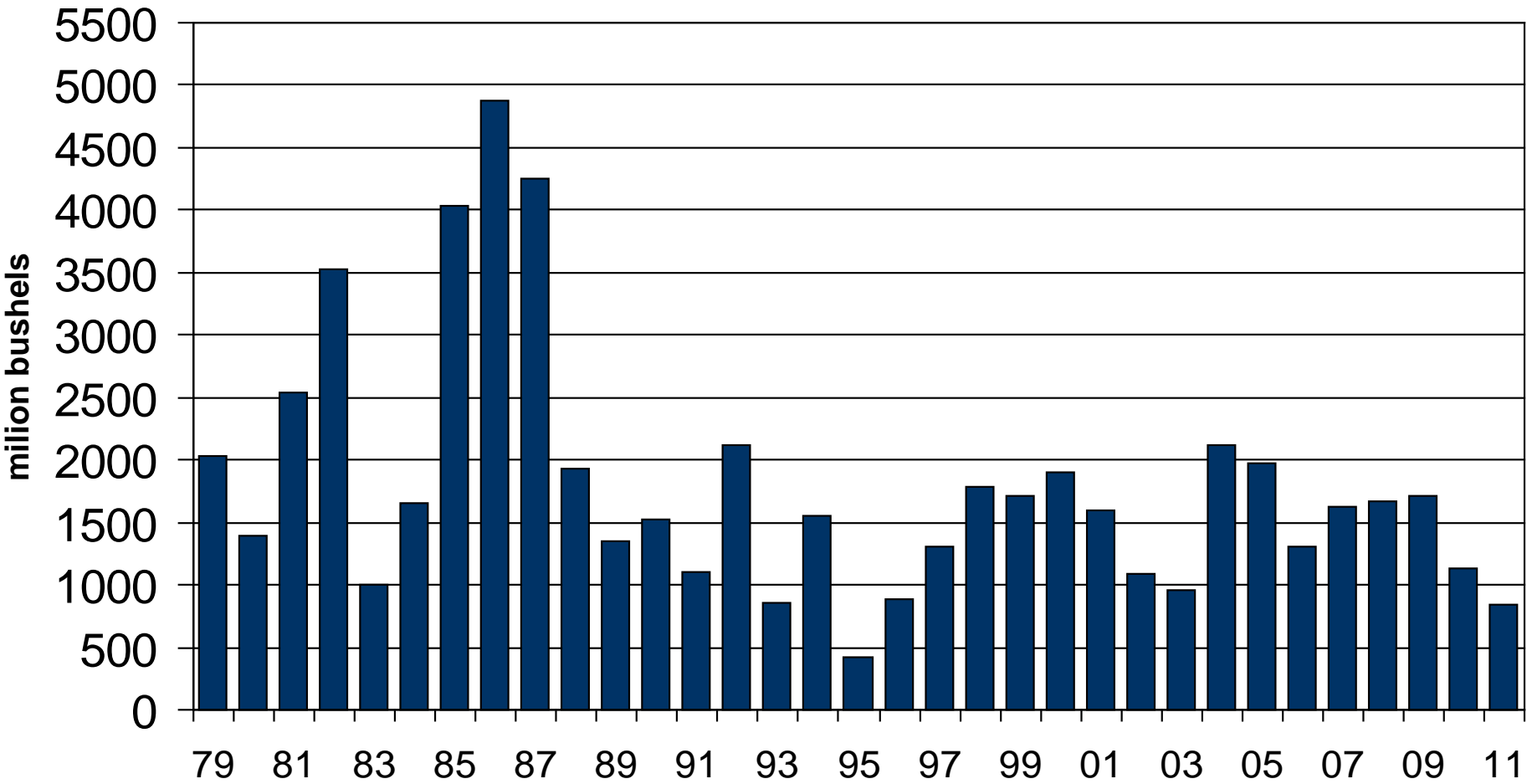
**2011 Illinois Farm Economics Summit**

*The Profitability of Illinois Agriculture: Managing in a Turbulent World*

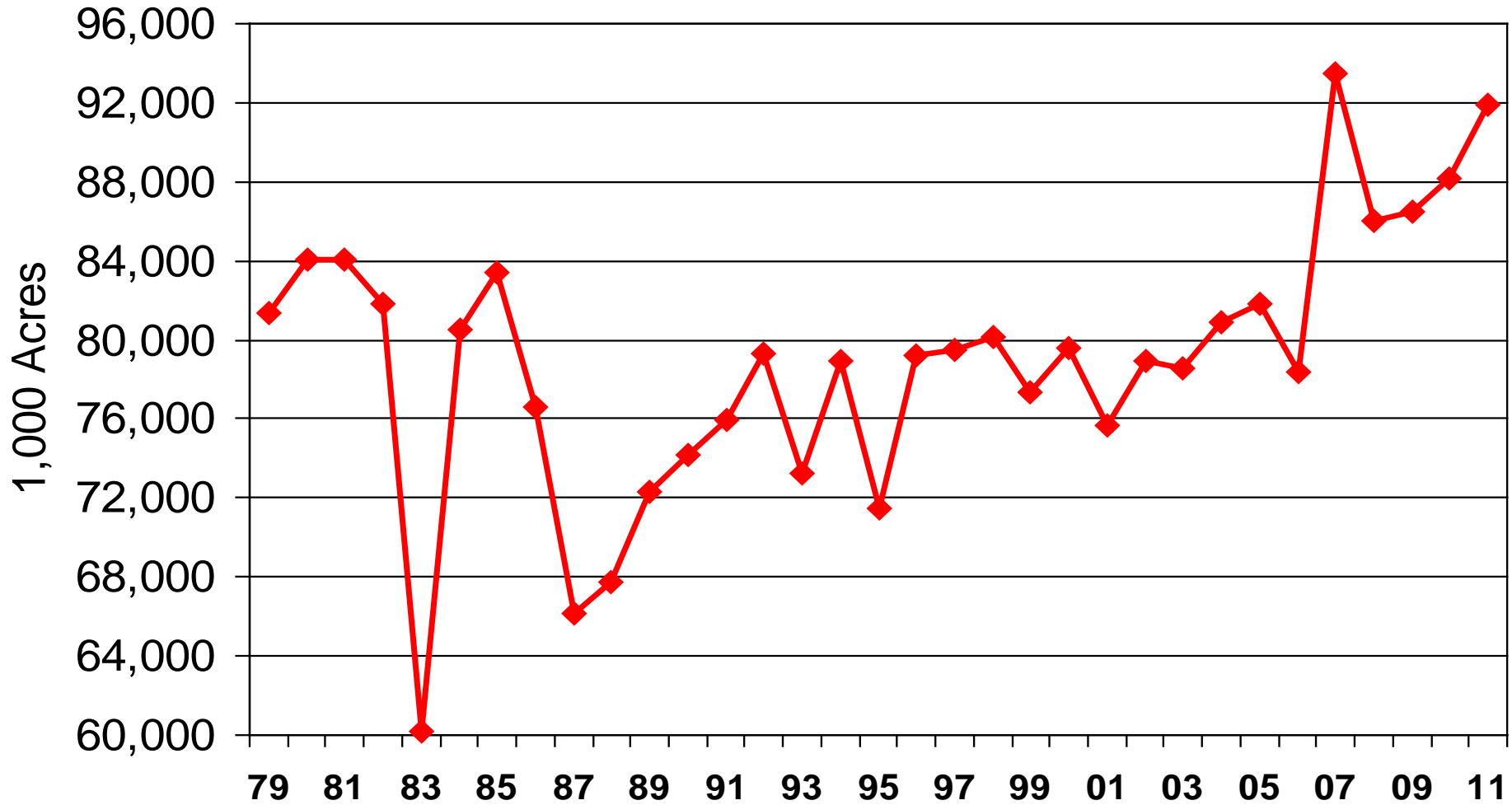
# US Corn Production



# Ending Stocks of Corn



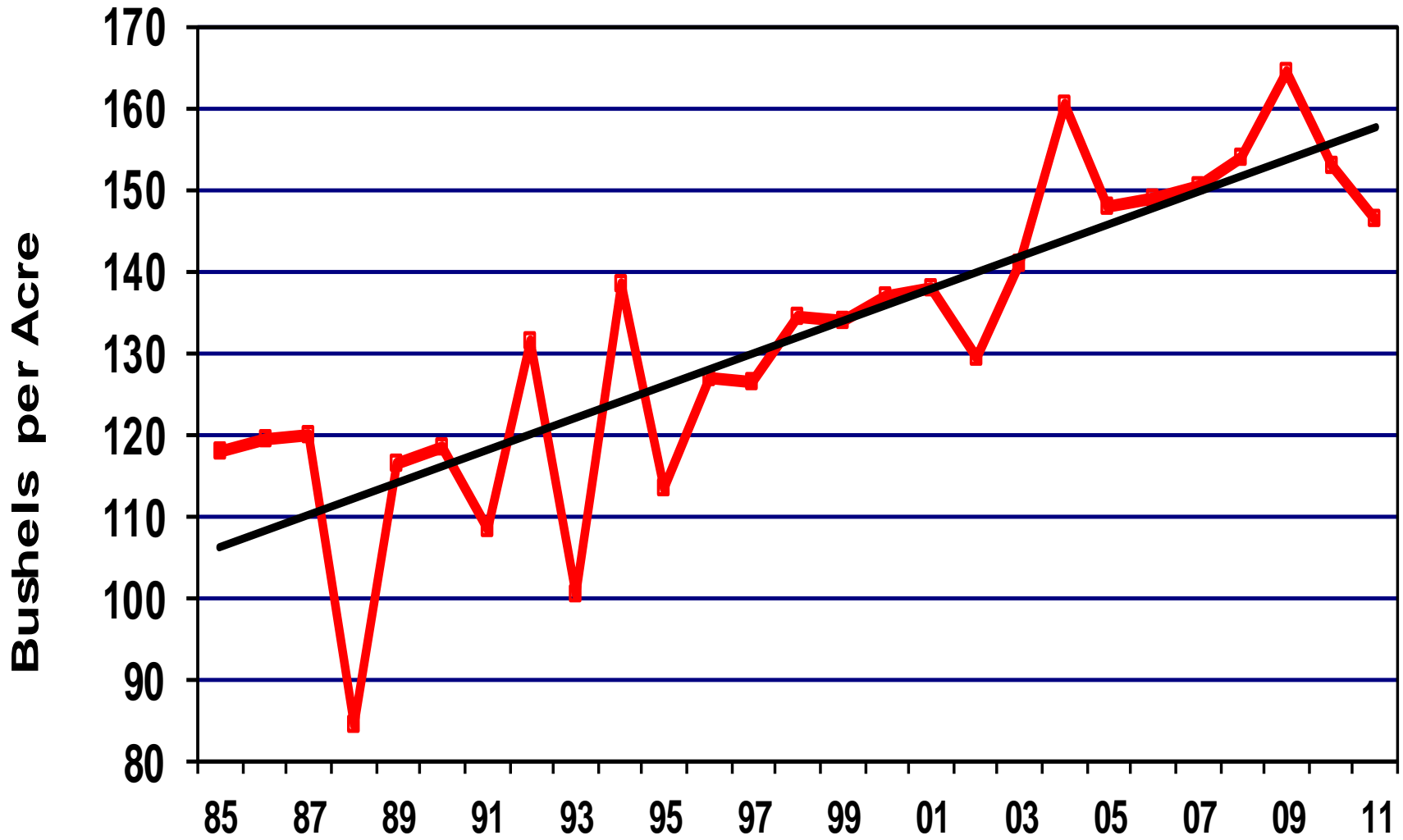
# US Corn Acres Planted



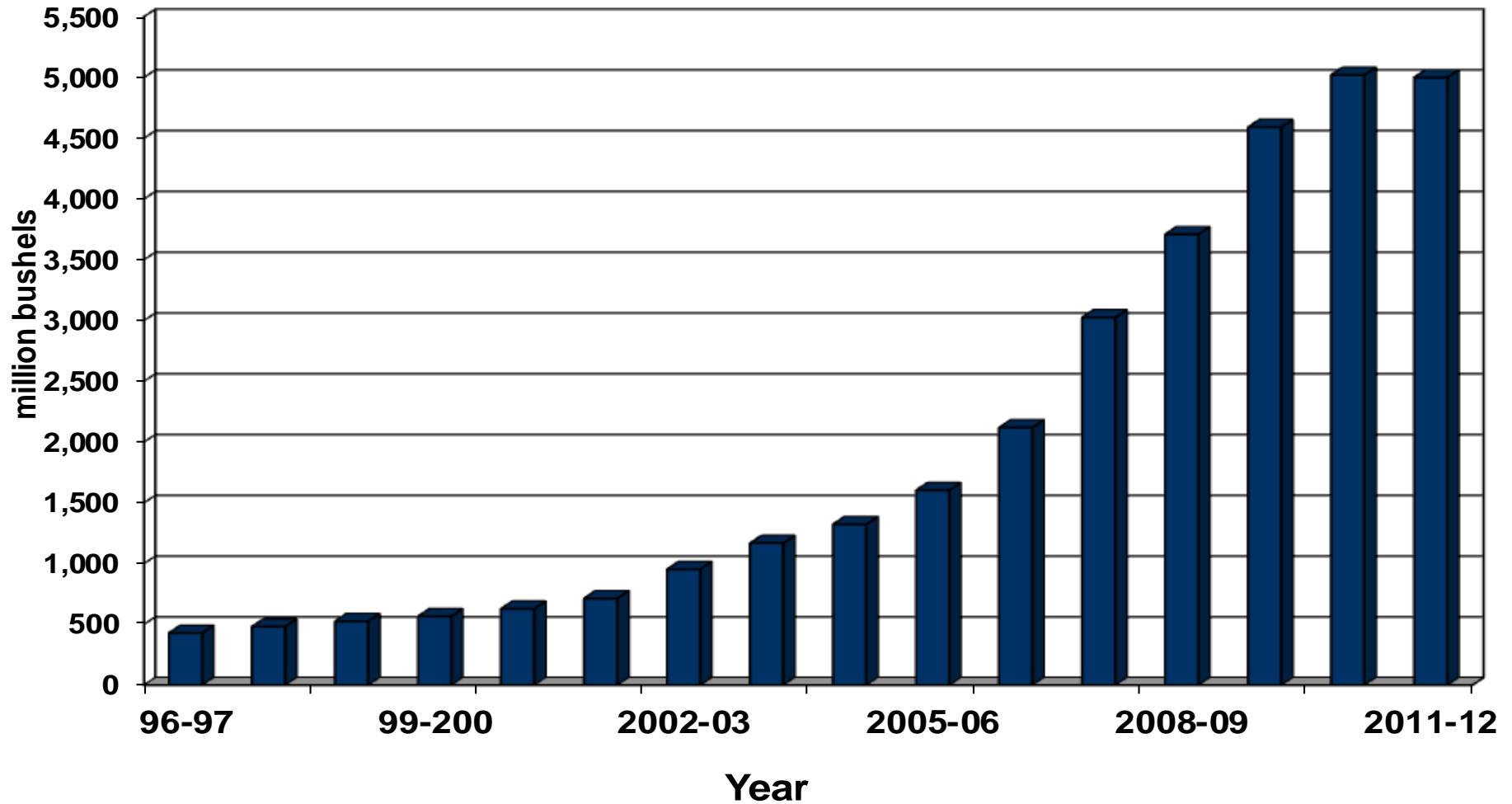
# US Corn Yield



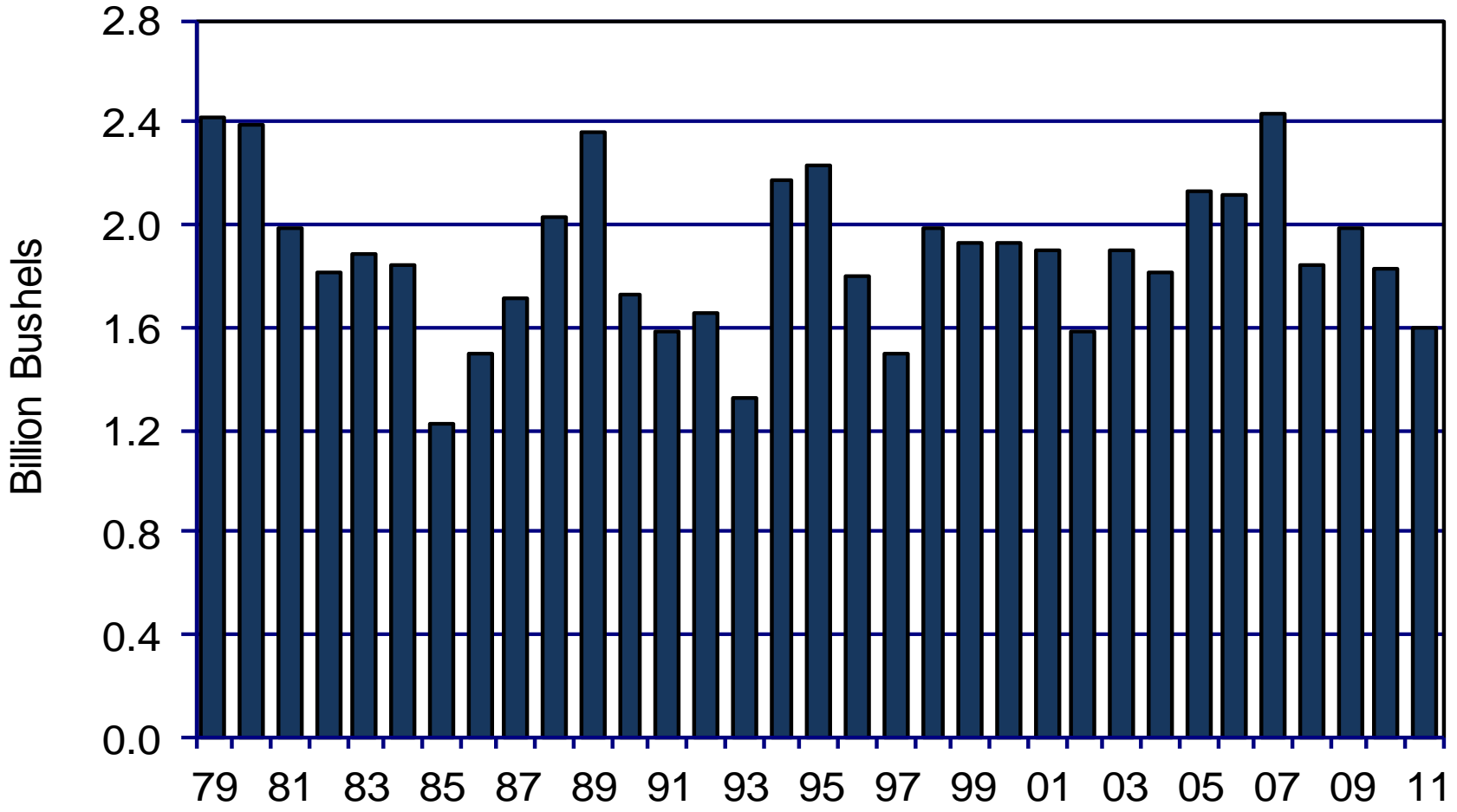
Harness the Power of the Internet



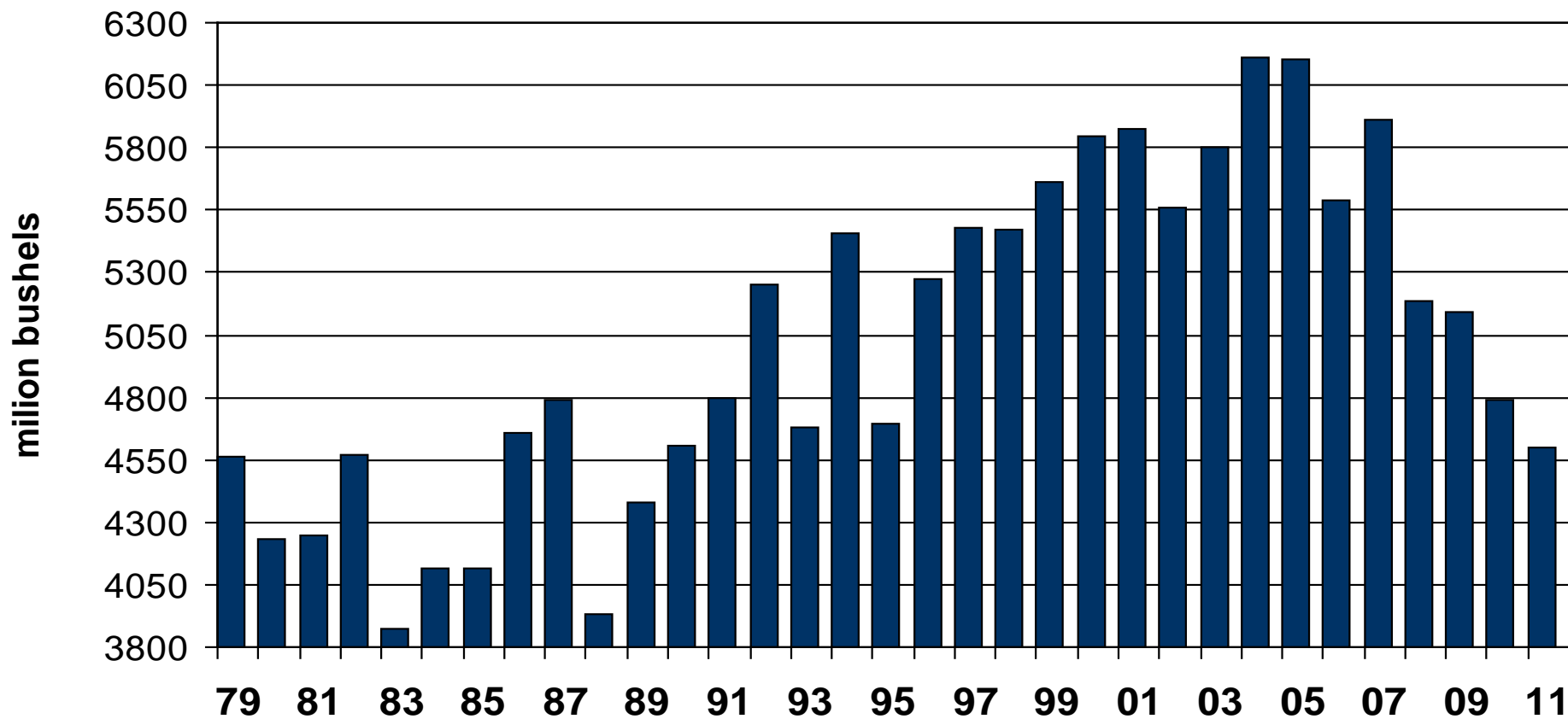
# Corn Used for Ethanol



# US Corn Exports

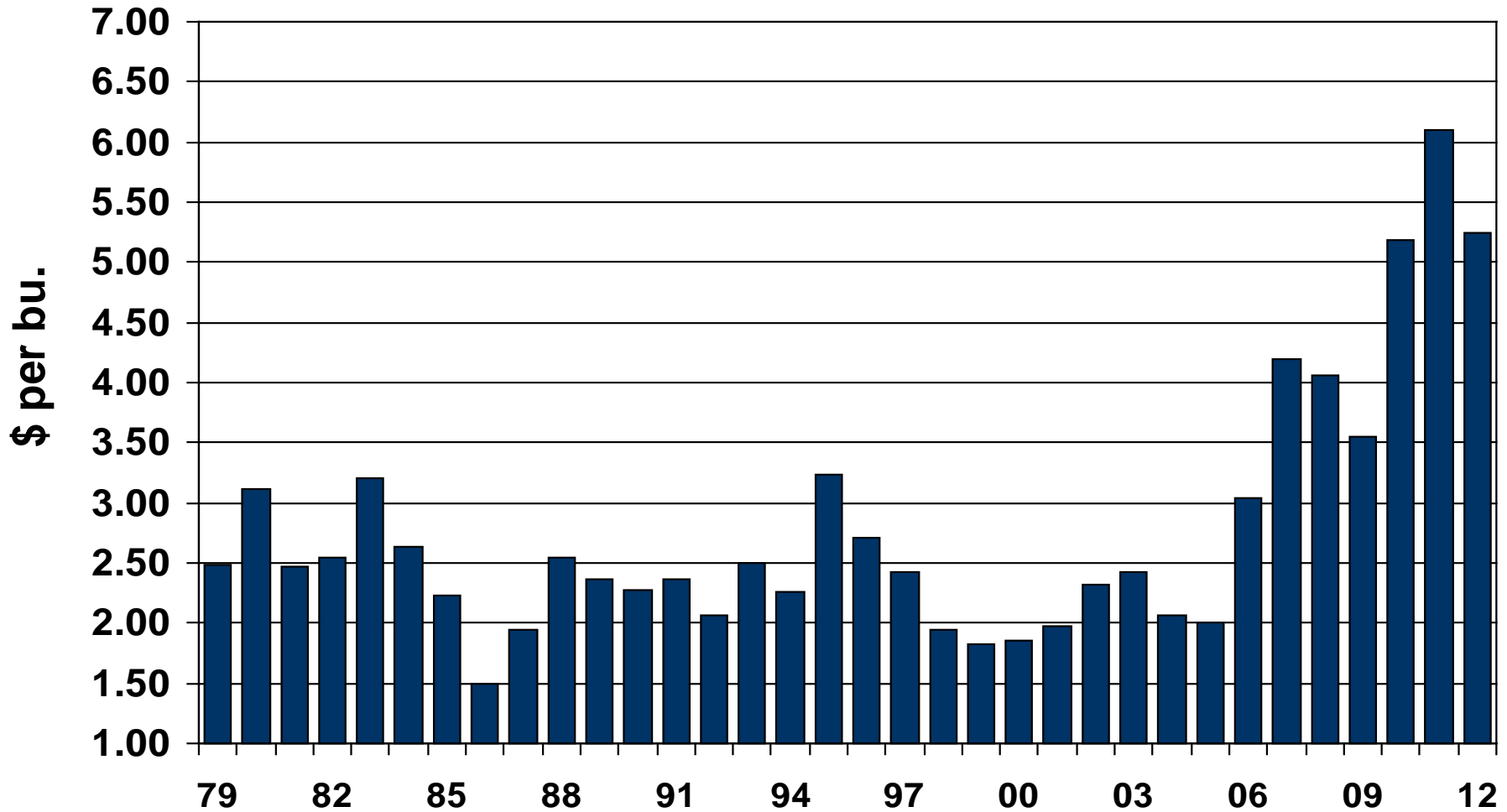


# Feed Use of Corn





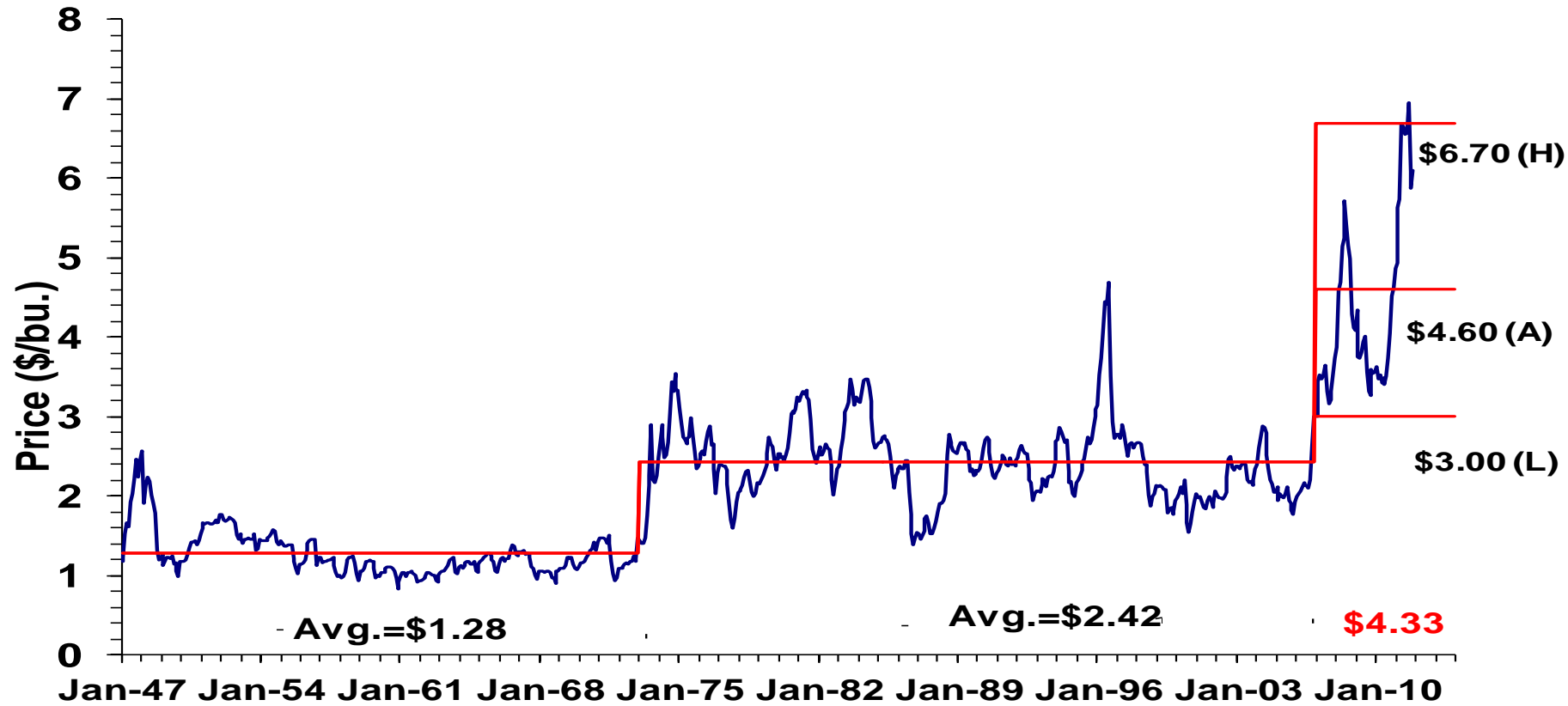
# Average Farm Price of Corn



# Long Term Price of Corn



Harness the Power of the Internet

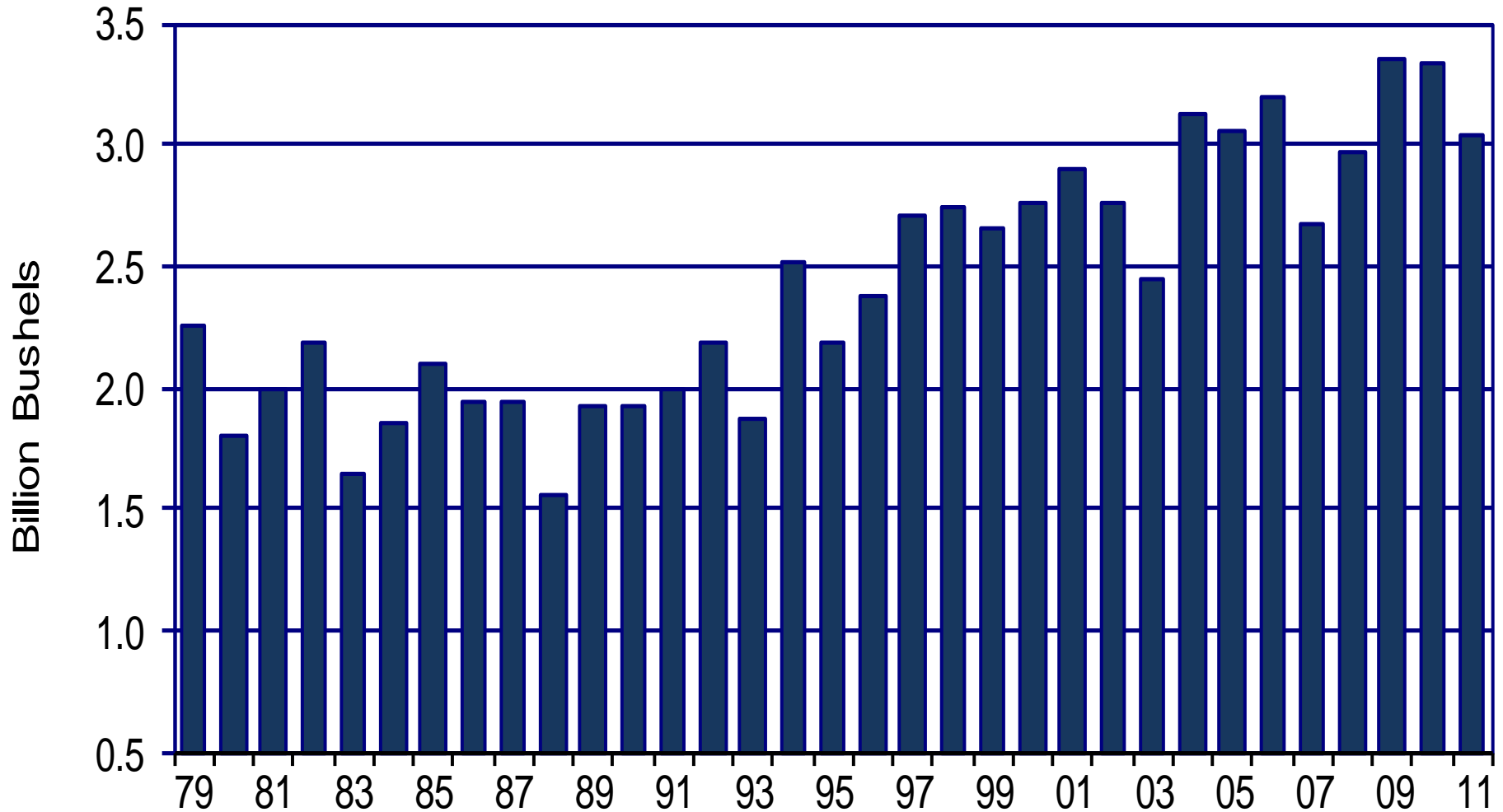


Source: NASS/USDA

Month/Year

\*H: High, A: Average, L:

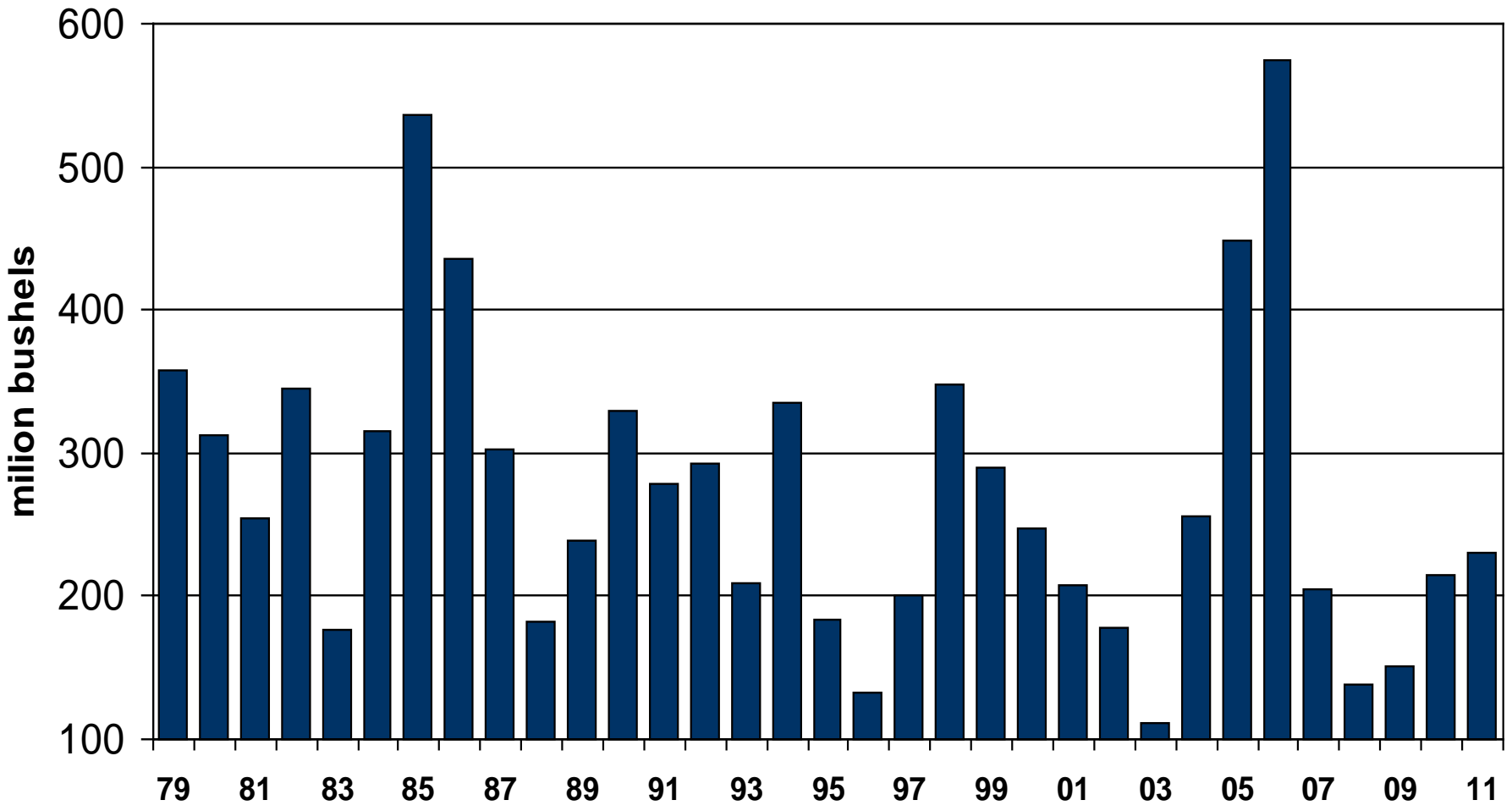
# US Soybean Production



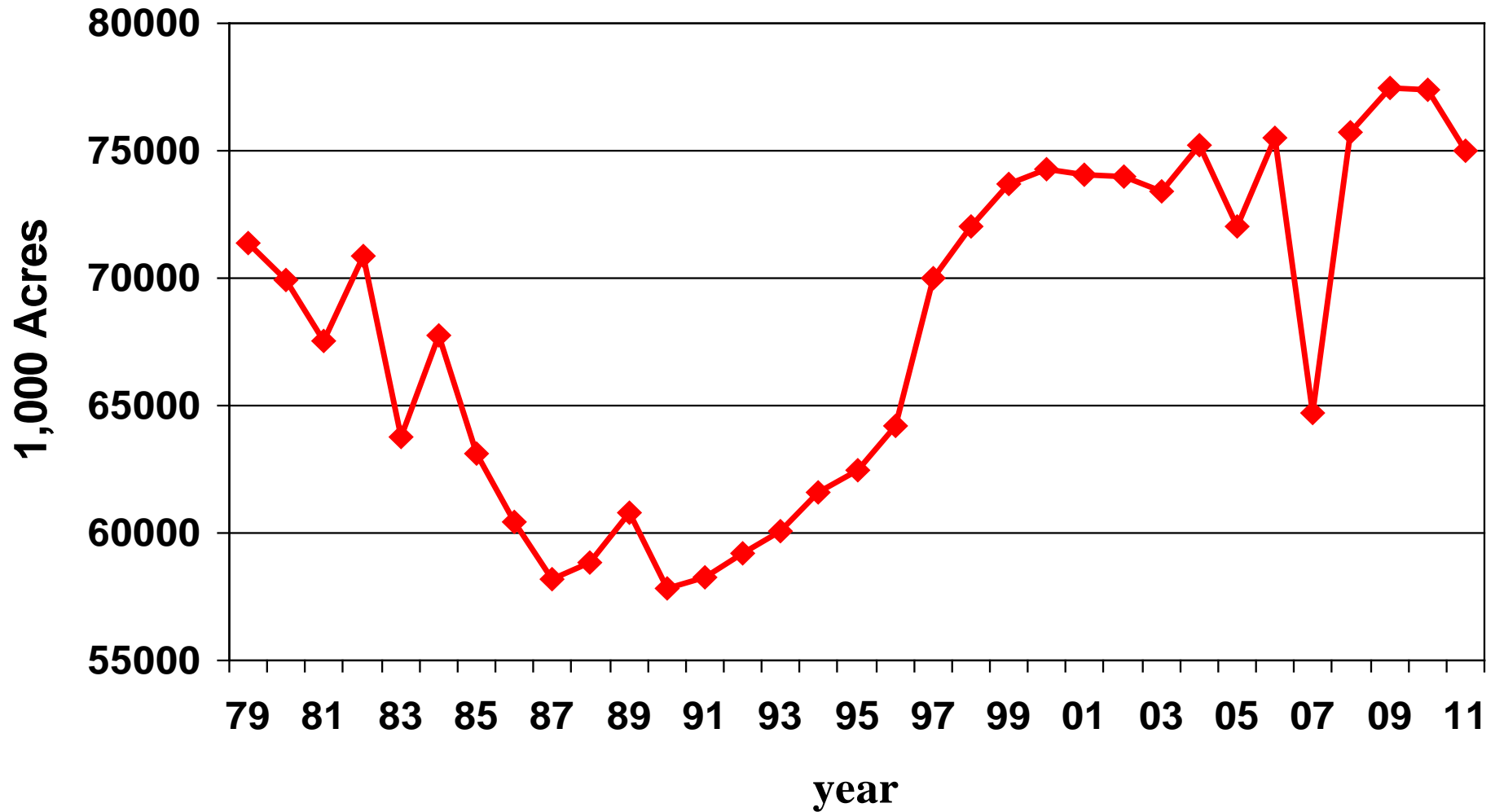
# Ending Stocks of Soybeans



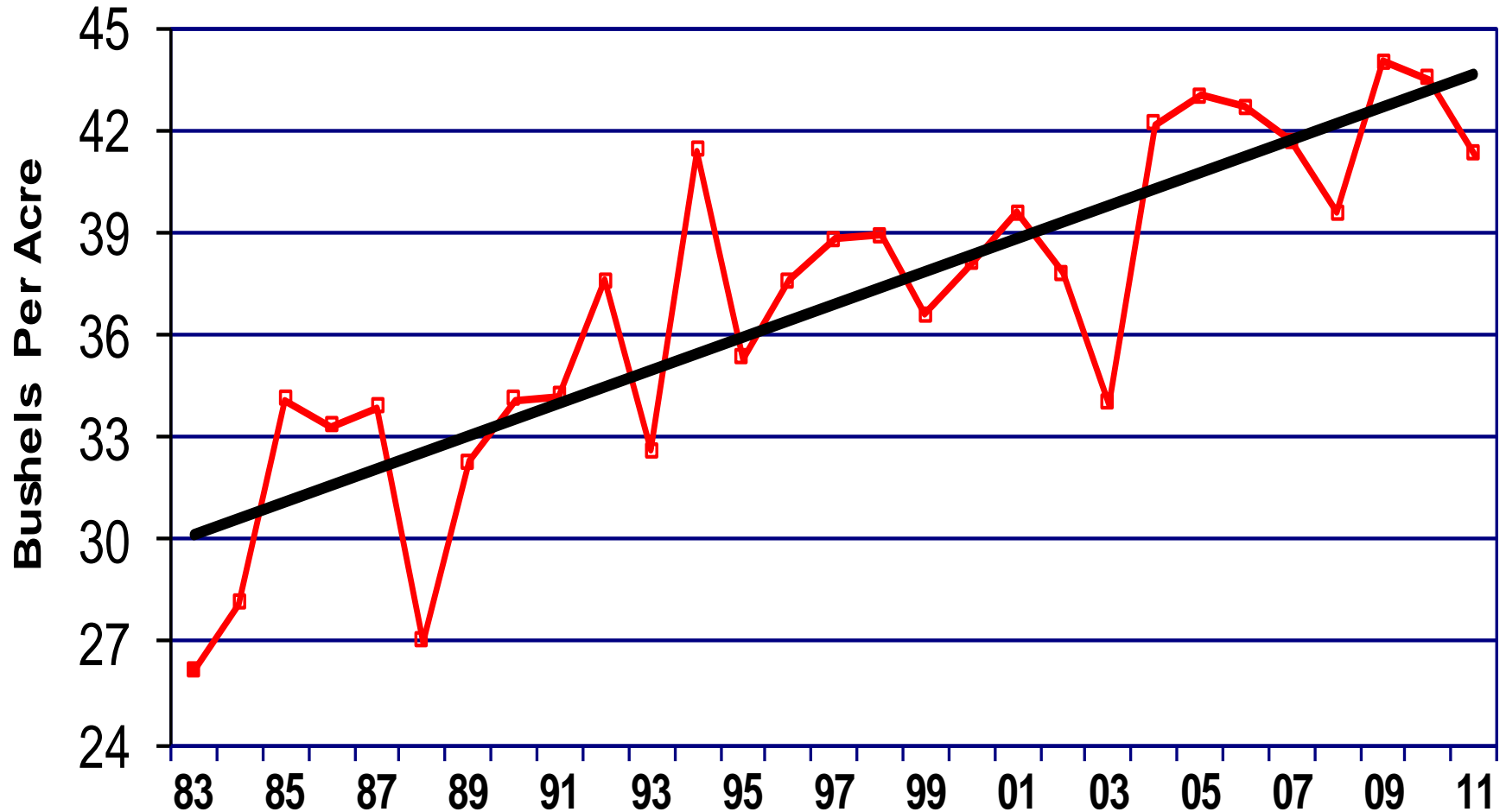
Harness the Power of the Internet



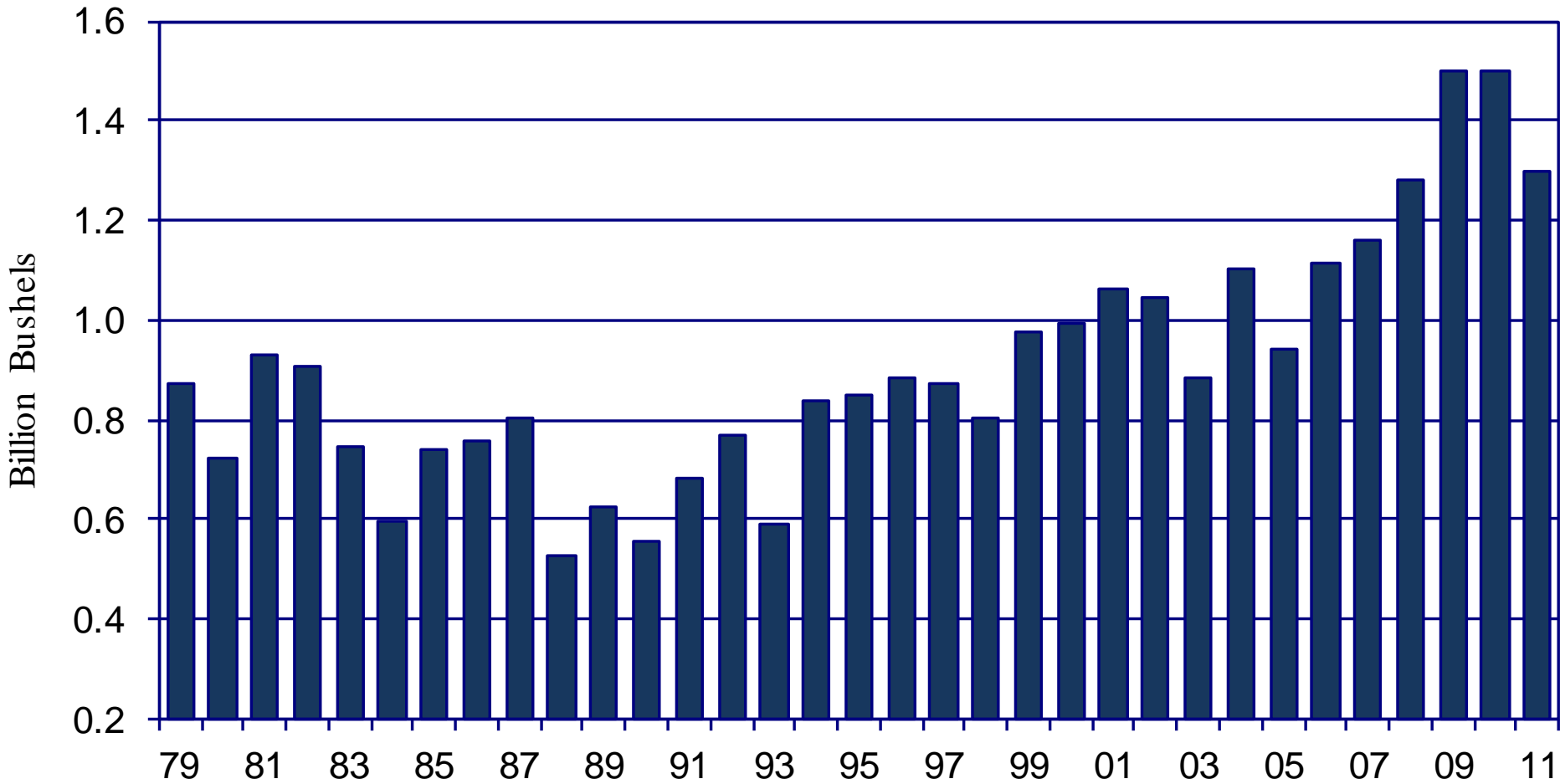
# US Soybean Acres Planted



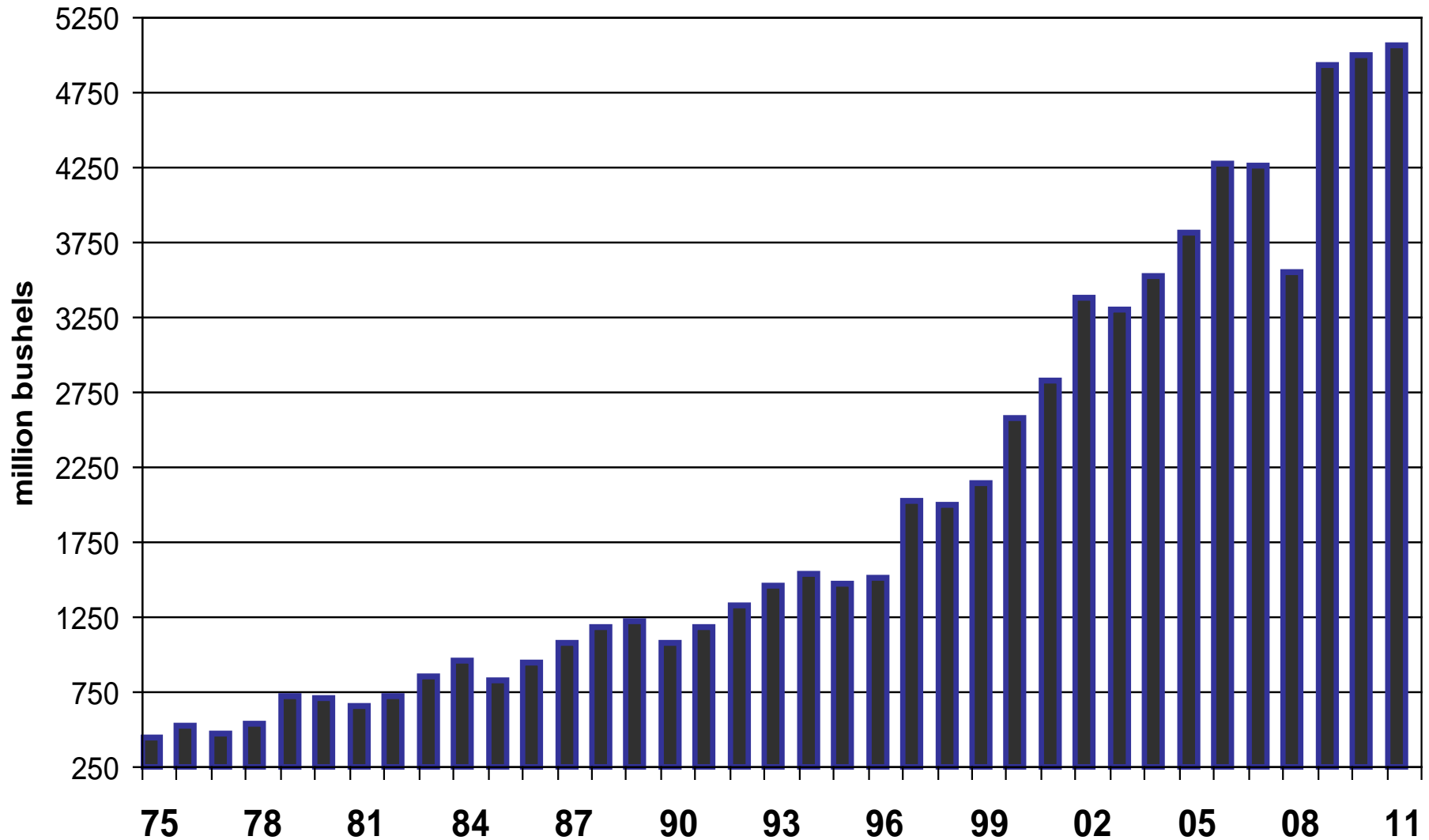
# U.S. Soybean Yields



# US Soybean Exports

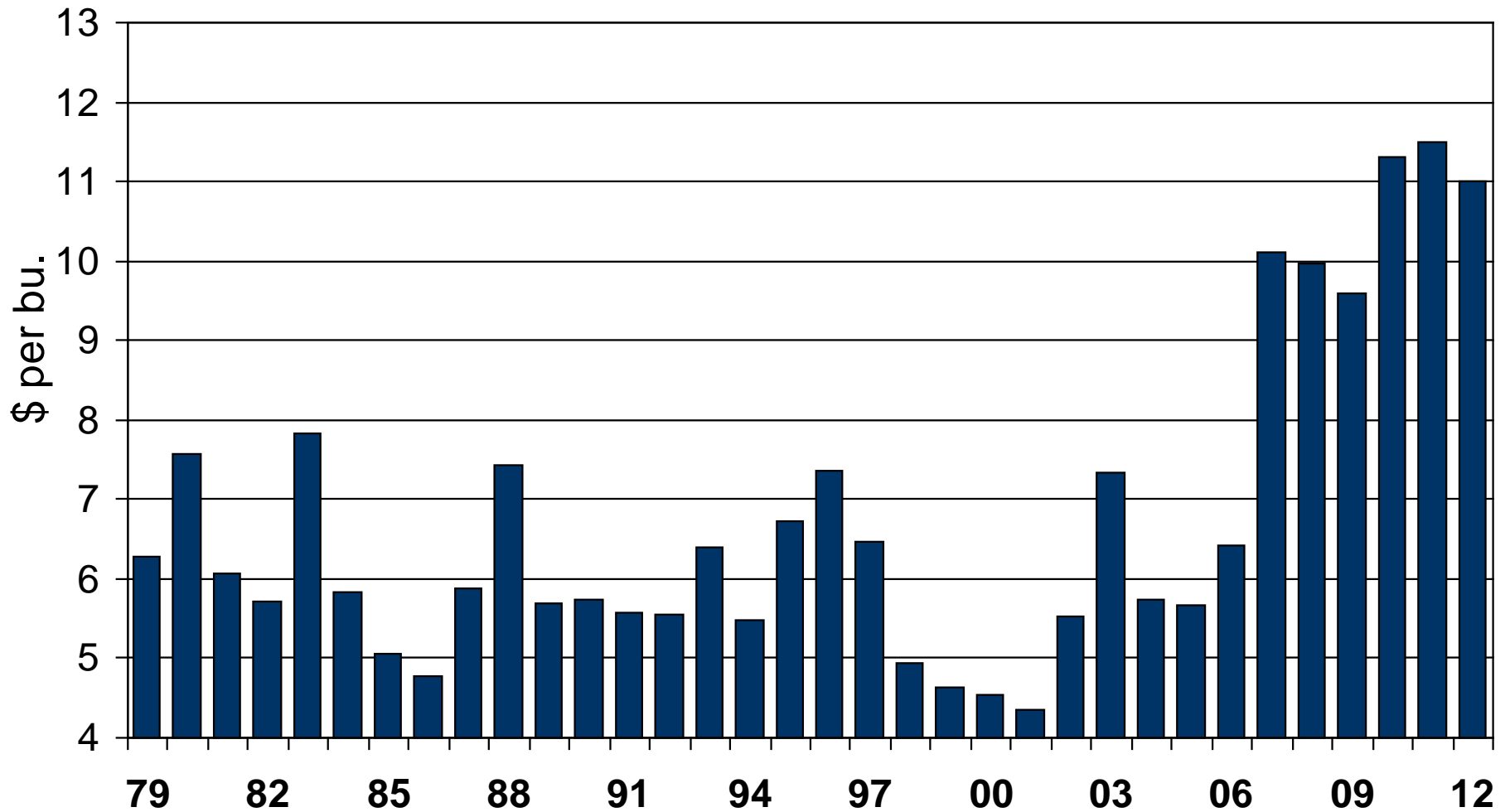


# S. A. Soybean Production

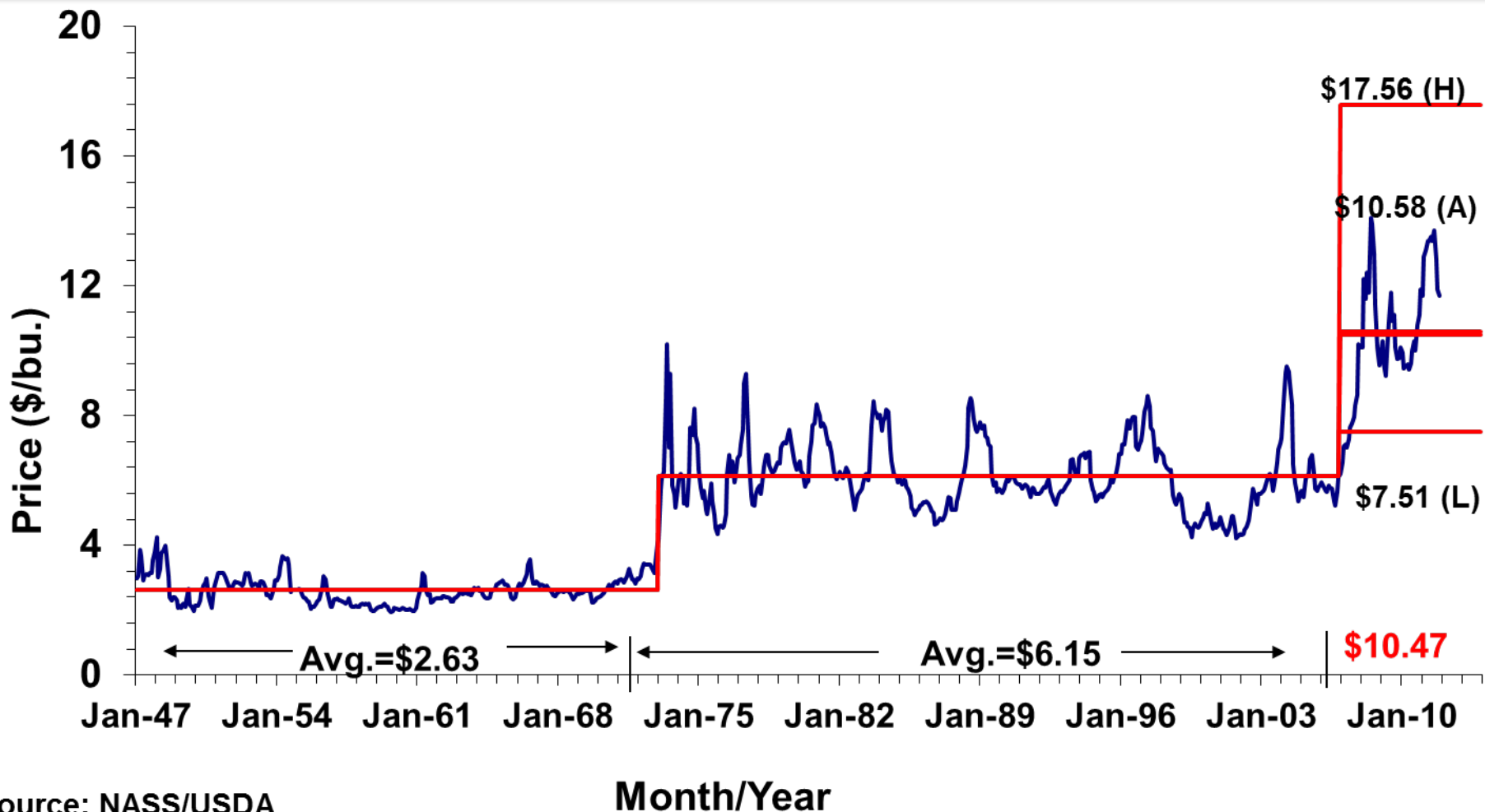




# Average Farm Price of Soybeans



# Long Term Price of Soybeans



Source: NASS/USDA

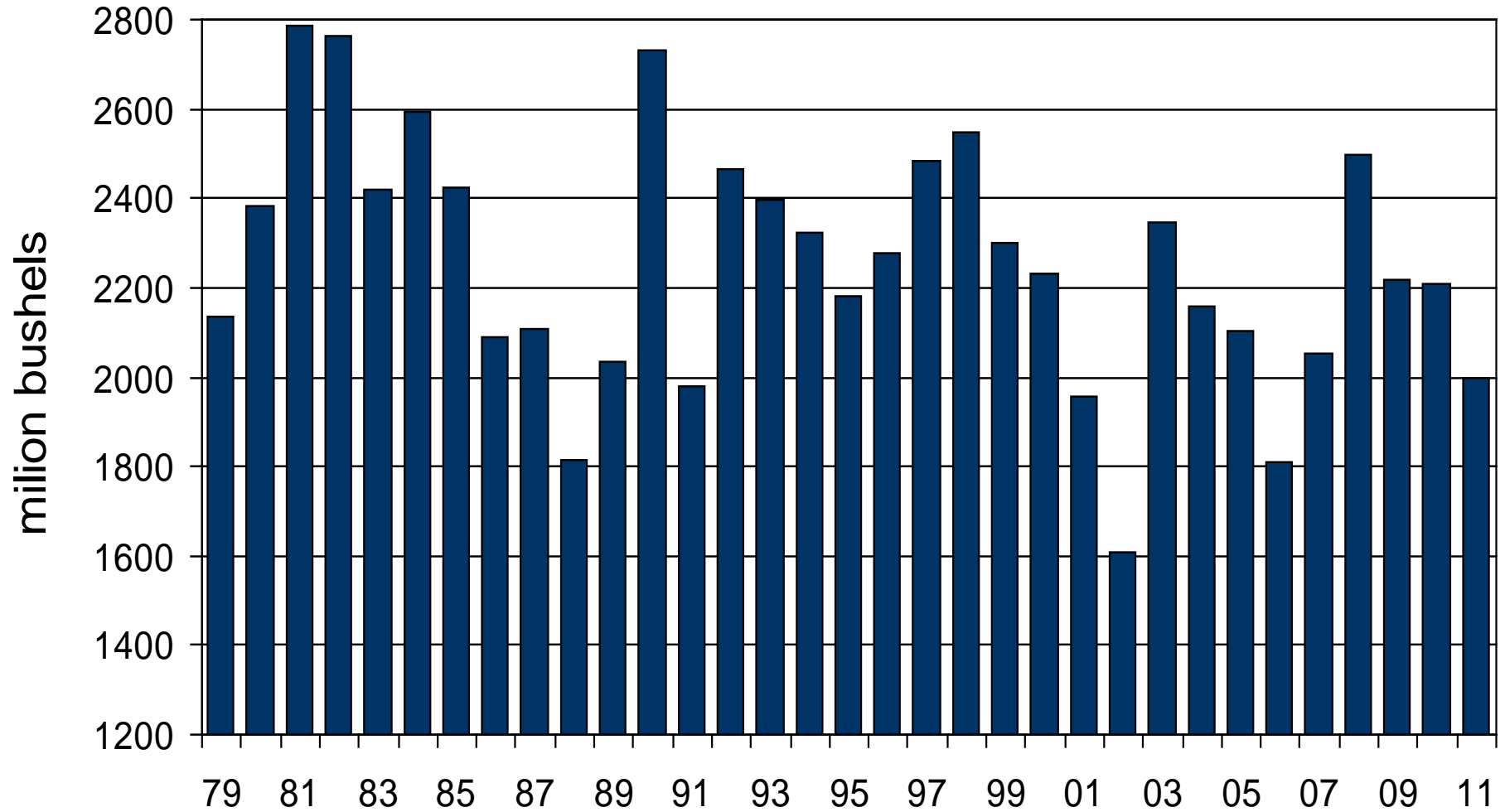
Month/Year

\*H: High, A: Average, L: Low

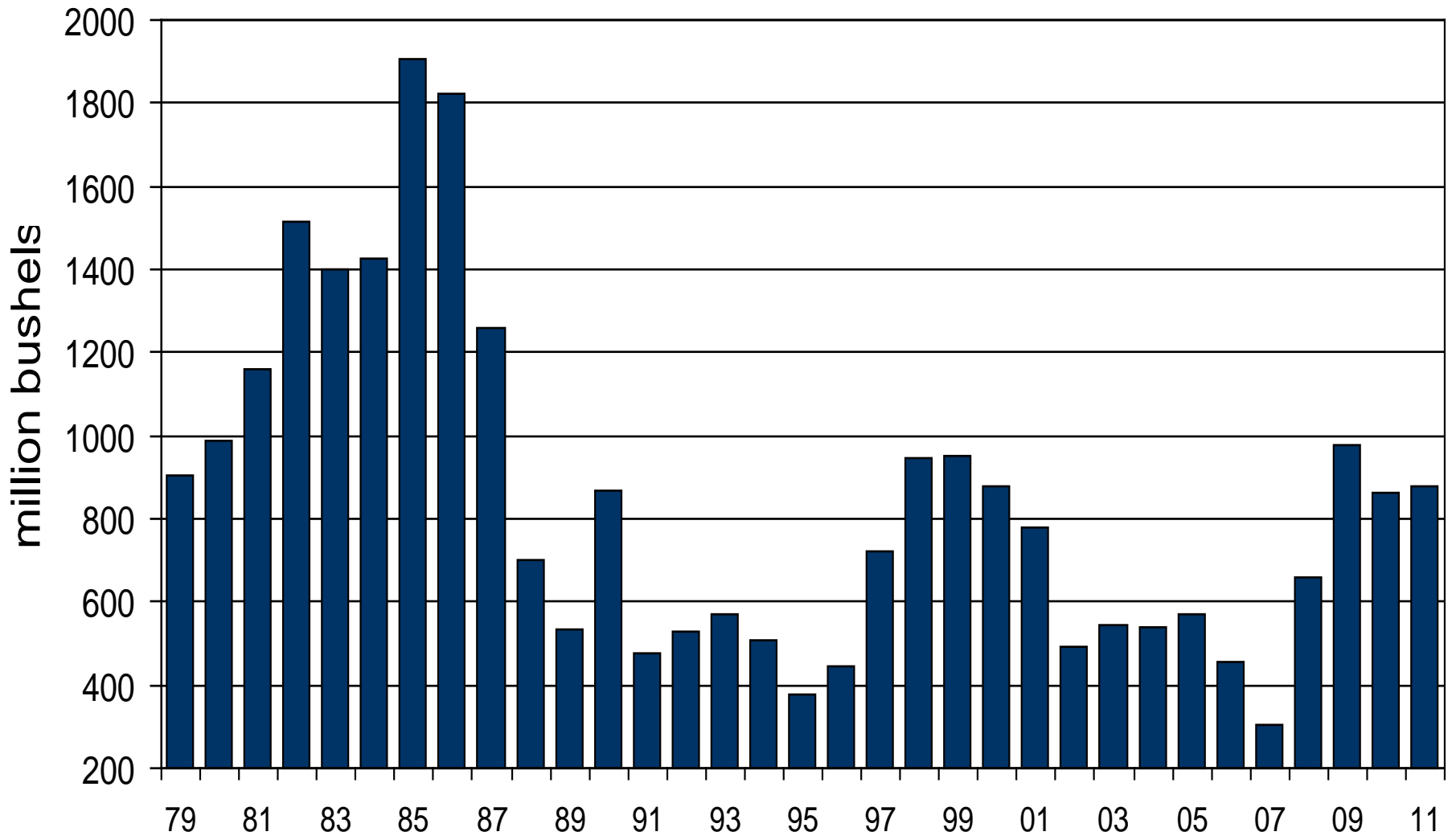
# US Wheat Production



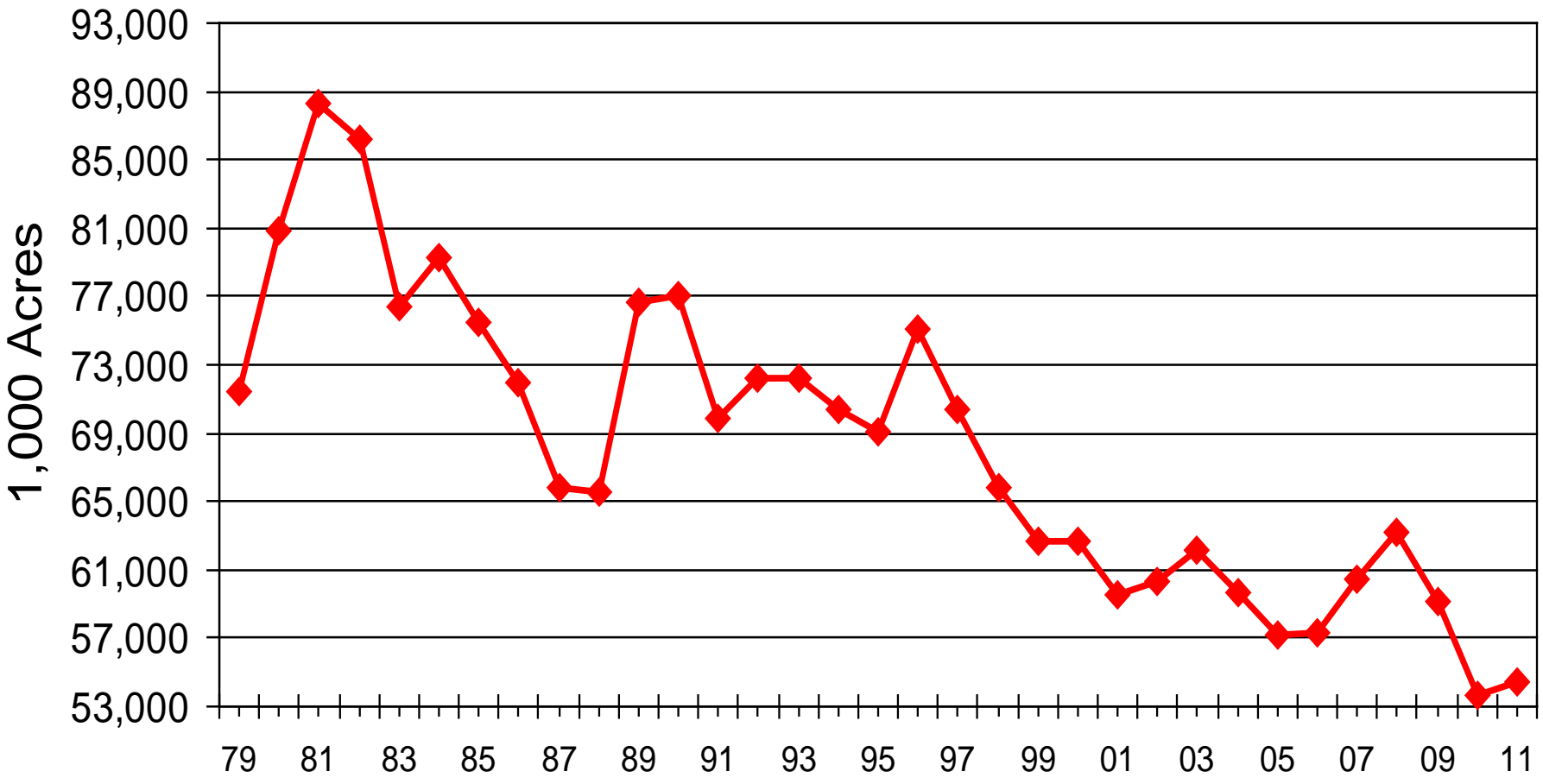
Harness the Power of the Internet



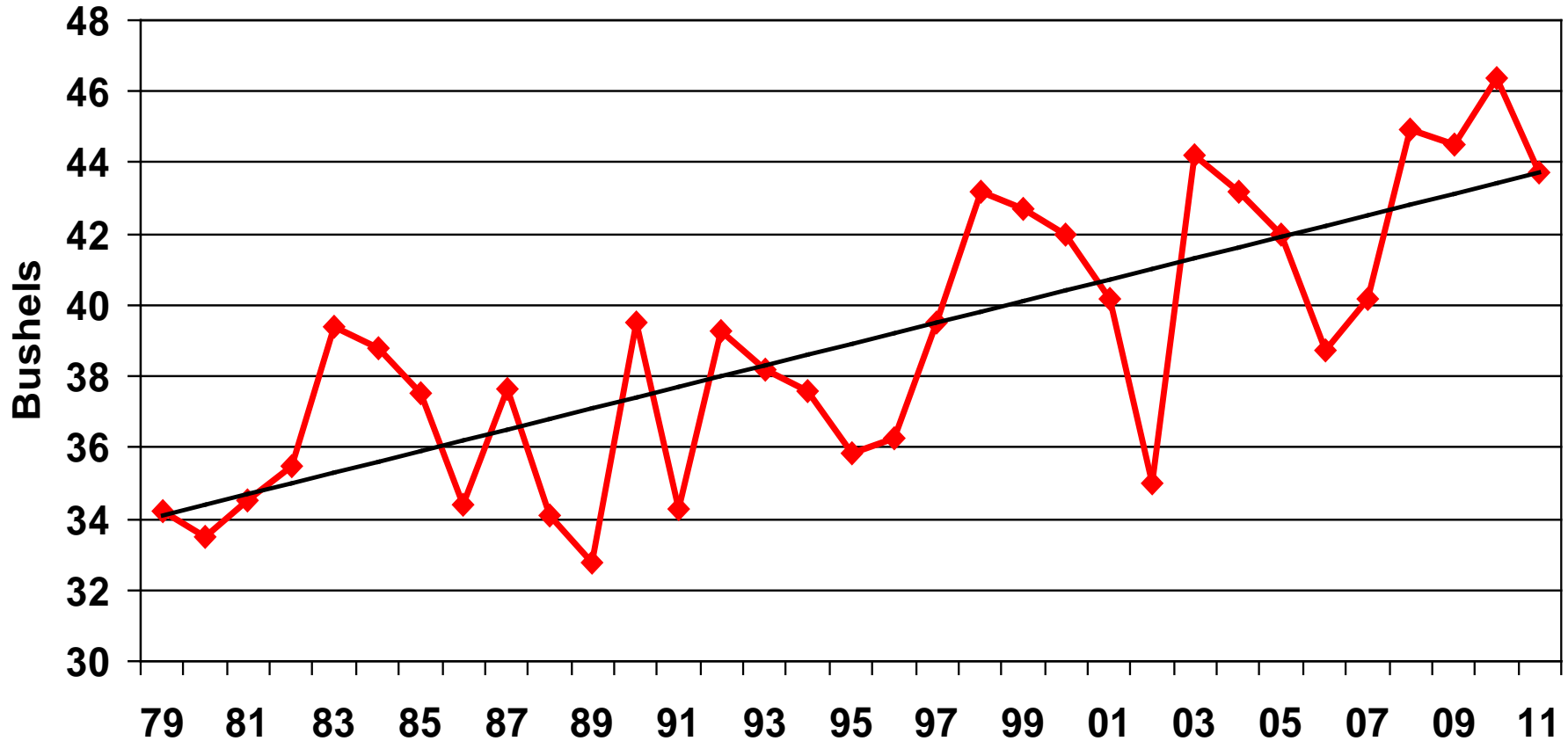
# Ending Stocks of Wheat



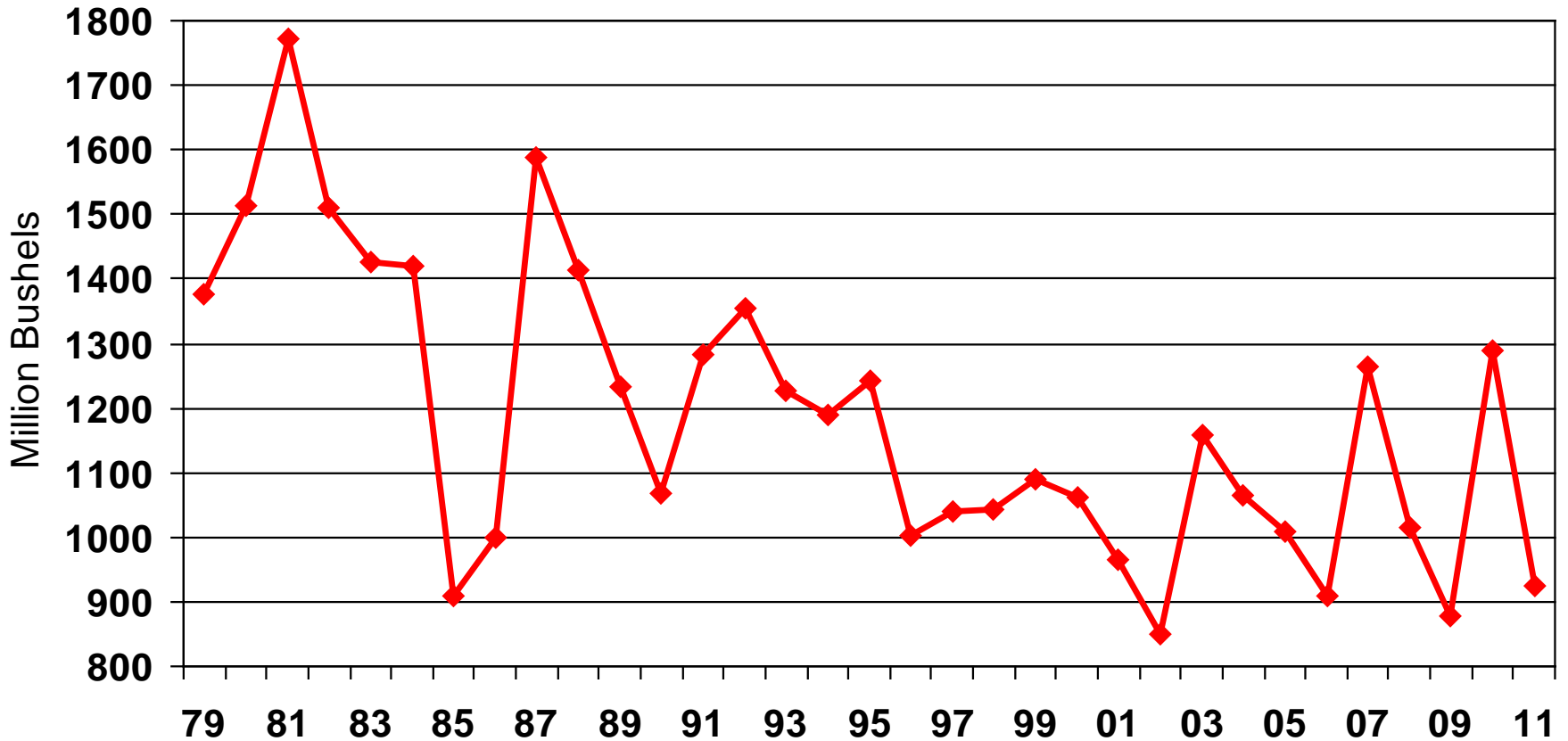
# US Wheat Acres Planted



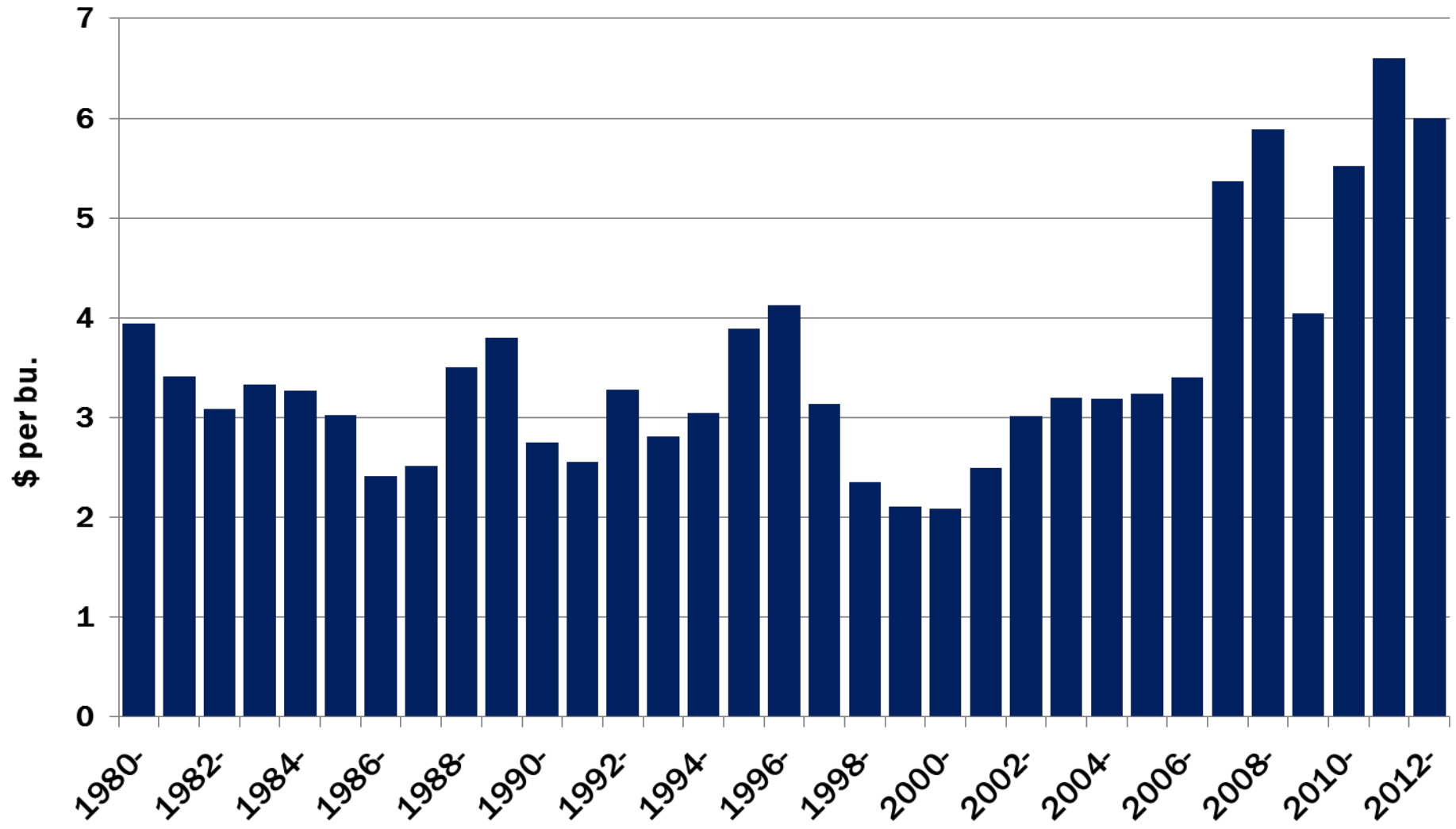
# US Wheat Yield Per Acre



# US Wheat Exports

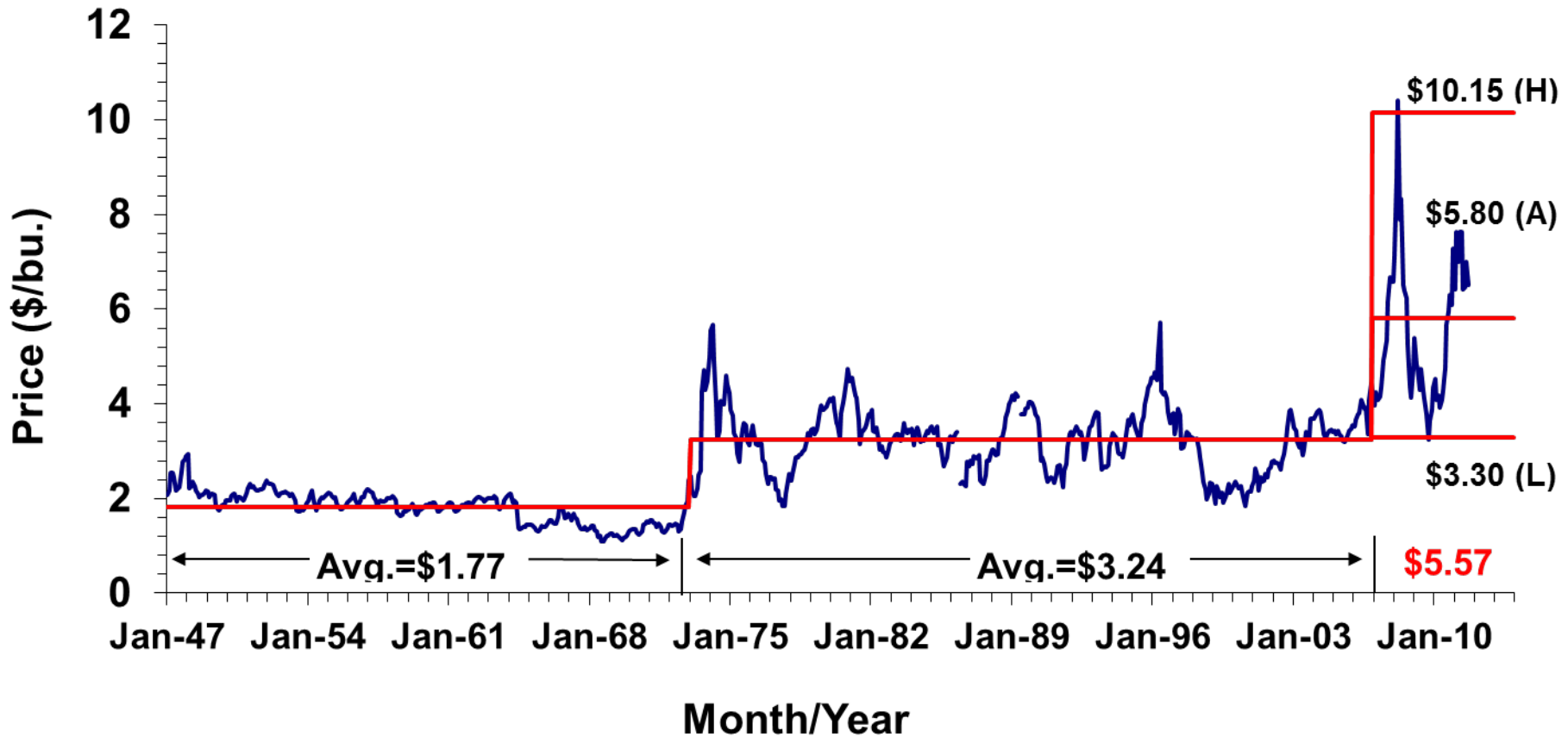


# Average Farm Price of Wheat





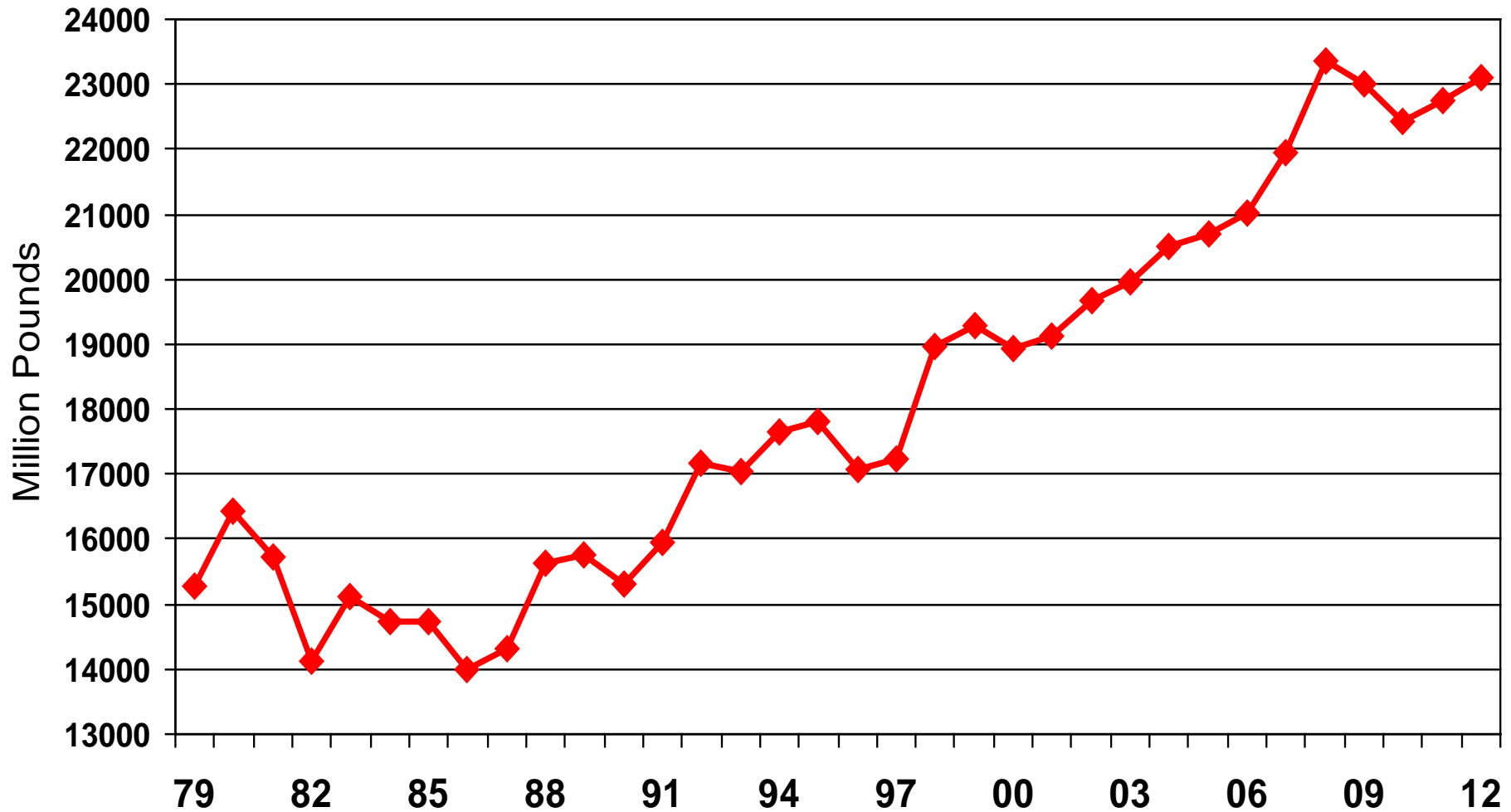
# Long Term Price of Wheat



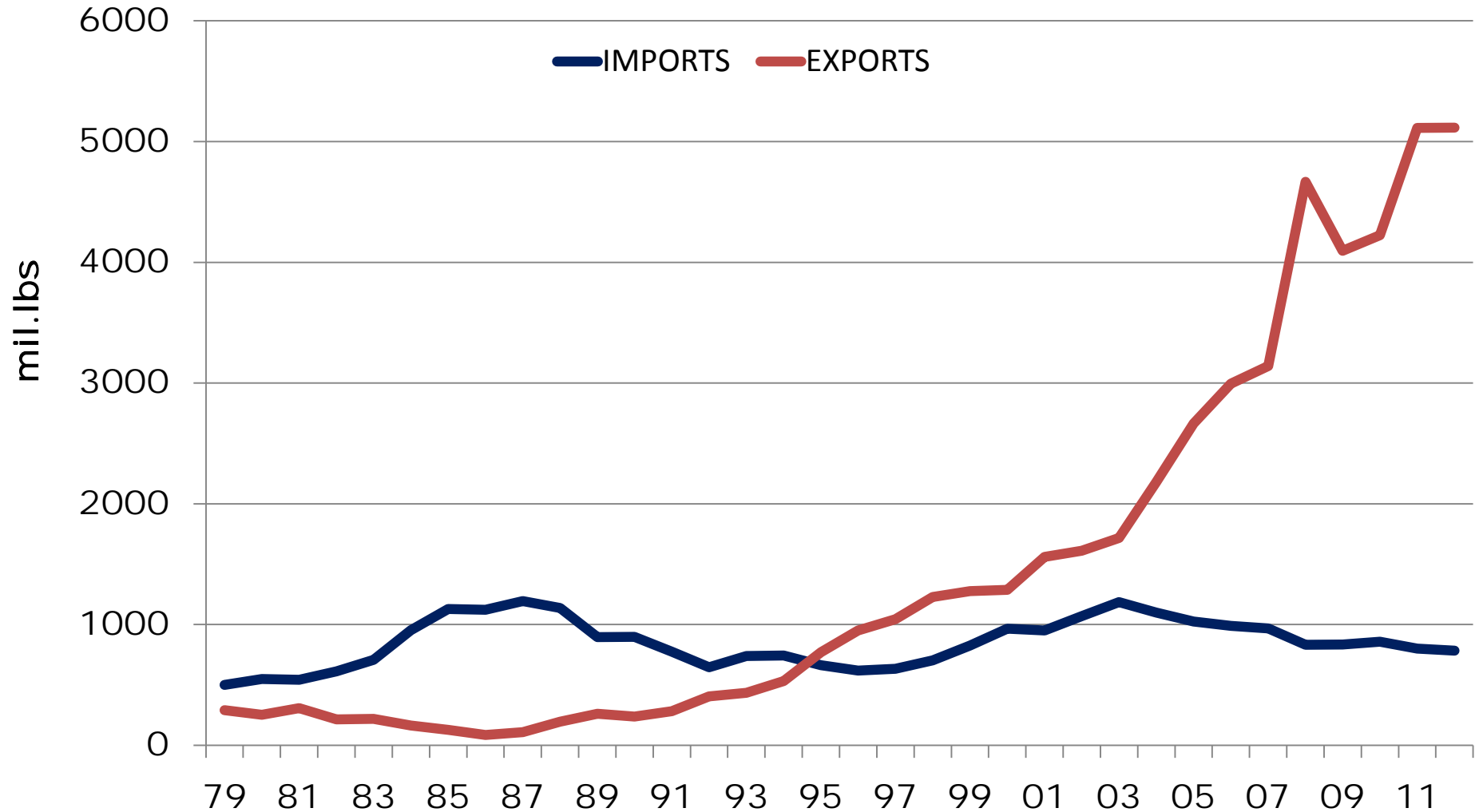
Source: NASS/USDA

\*H: High, A: Average, L: Low

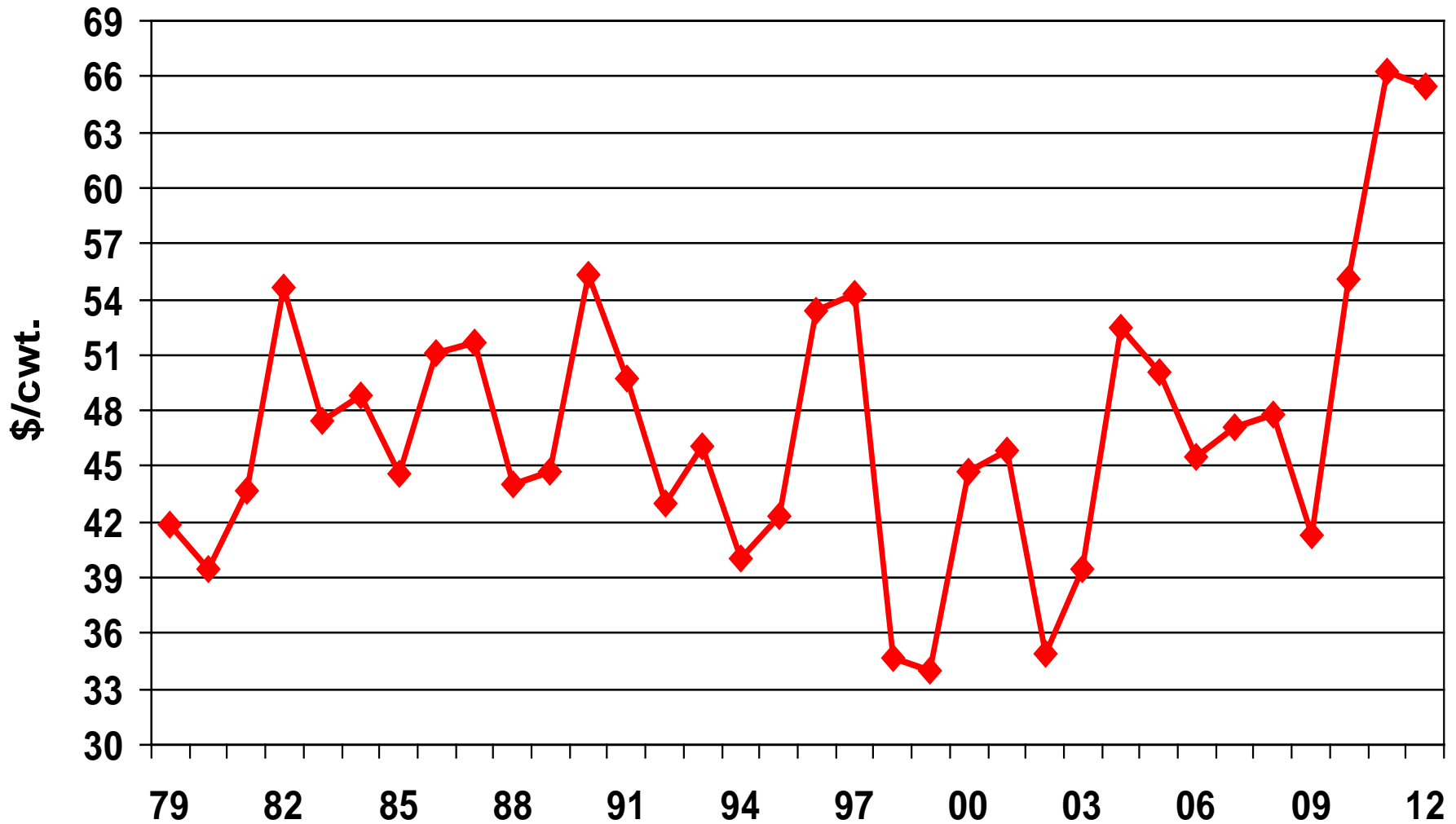
# Pork Production



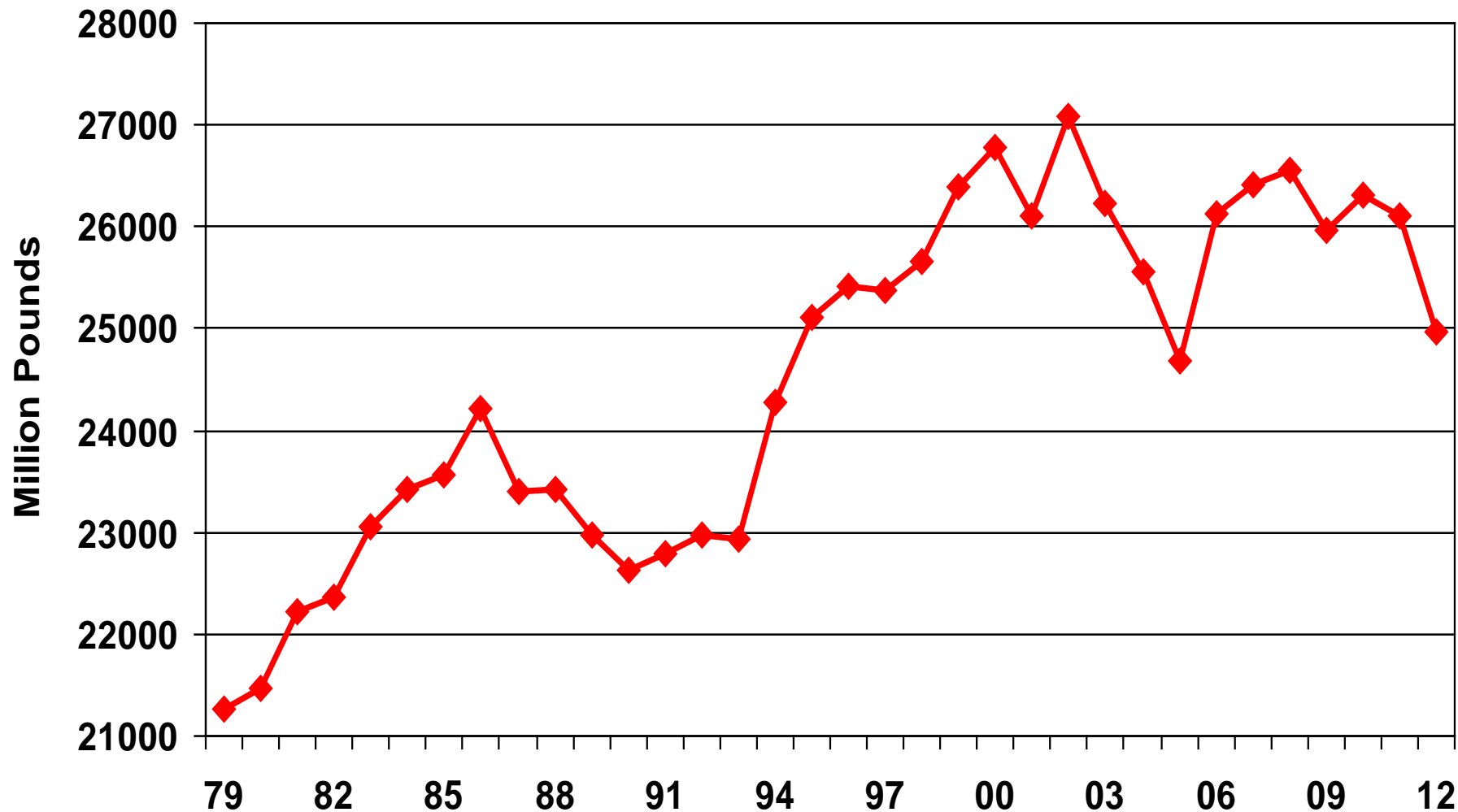
# US Pork Trade



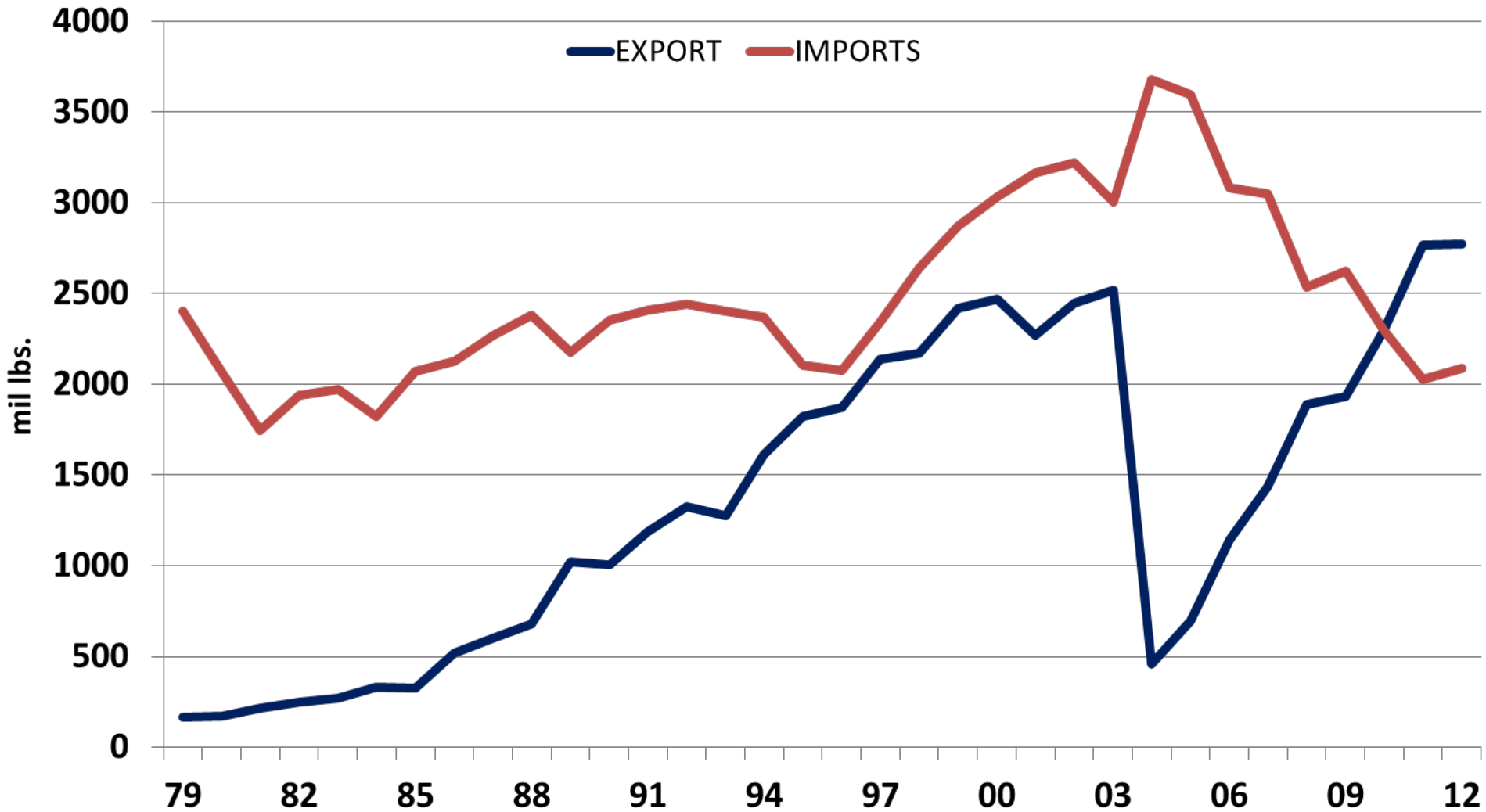
# Hog Prices



# Beef Production



# U.S. Beef Trade



# Steer Prices

