



# NASS

FACT FINDERS FOR AGRICULTURE  
UNITED STATES DEPARTMENT OF AGRICULTURE

## USDA - NASS Revealed: Procedures in setting Crop, Livestock and Economic estimates.



Brad Schwab  
Director  
Illinois Field Office



Mark Schleusener  
Deputy Director  
Illinois Field Office



## Presentation Goals

- Help you to understand NASS methods.
- Help you to have more confidence in NASS estimates and forecasts.
- Assure you that your reports are confidential.
- Encourage future responses to our projects.



# NASS Mission Statement

- The National Agricultural Statistics Service provides timely, accurate, and useful statistics in service to U.S. agriculture.



## NASS Structure

- 46 Field Offices, partnering with state Dept of Ag
- Staff have degrees in agricultural, math, statistics or computers
- HQ in Washington, D. C.
  - National Operations Center in St. Louis
- No political appointees
  - No changes with elections

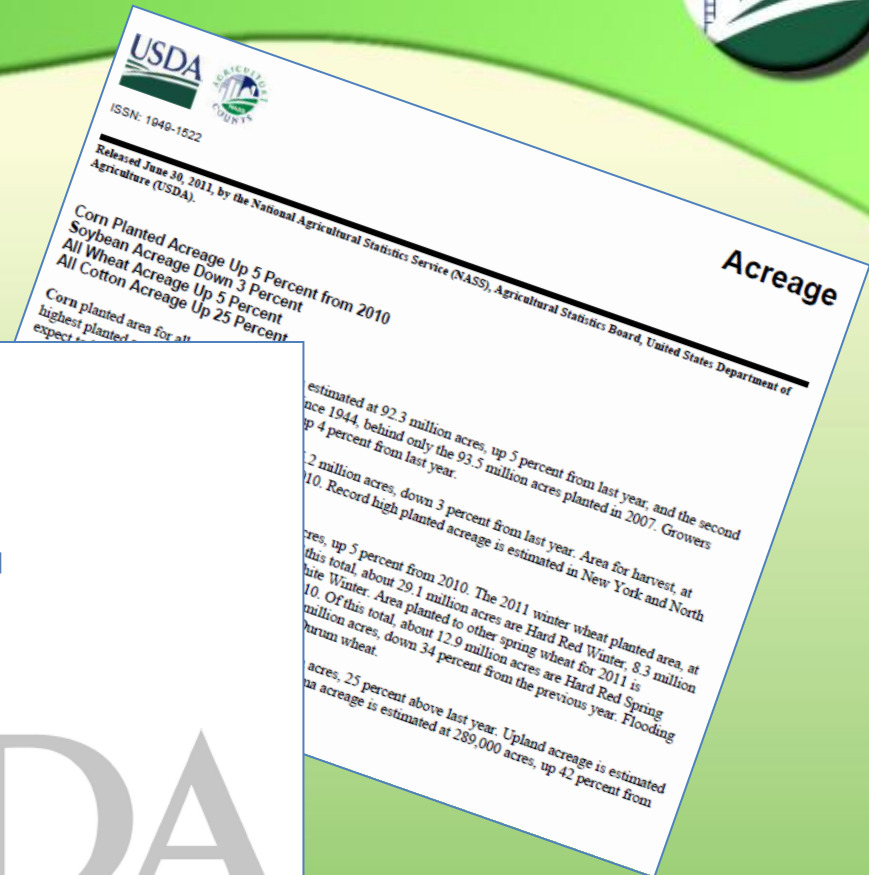
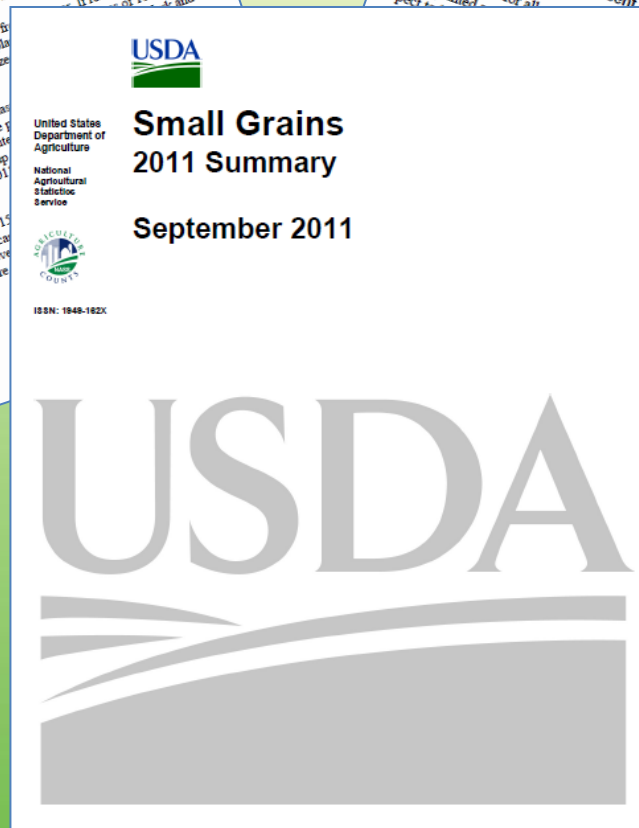
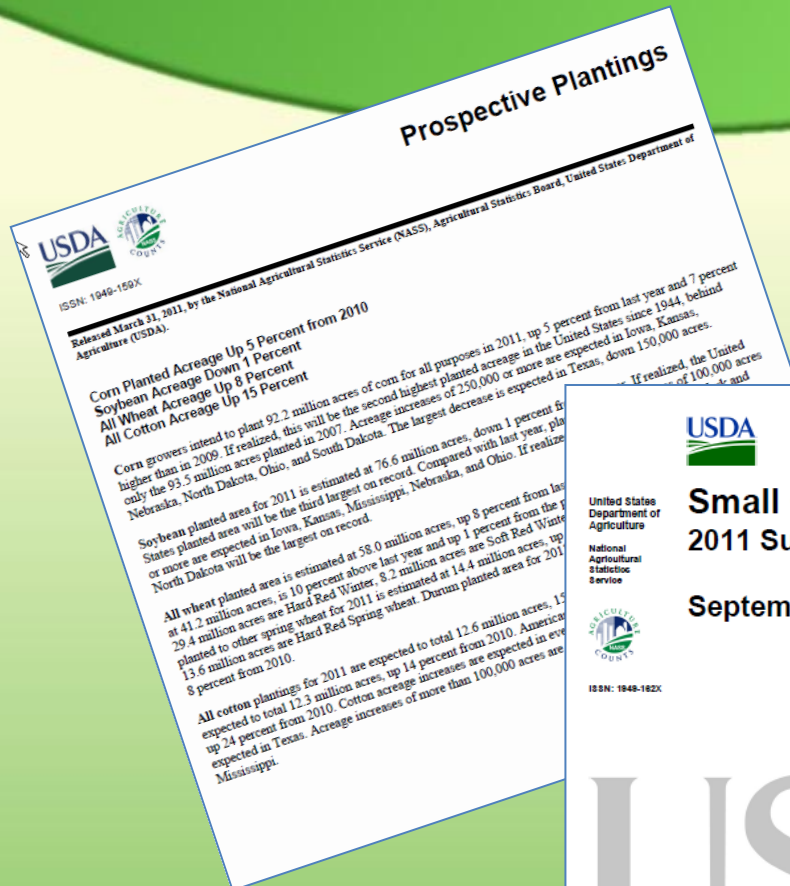


## NASS Projects

- Crop surveys - Acreage, yield, production, and grains in storage
  - State, districts, and counties
- Livestock – Inventory, breeding intentions
- Economic – Crop prices, livestock prices, feed, seed, fertilizer, land, etc
- Census of Agriculture – crops, livestock, economic

# USDA - NASS - ILLINOIS FIELD OFFICE

## SPRINGFIELD, ILLINOIS







# State Level Acreage





# Acreage Estimation

- March Intentions survey
- June Acreage report
- September Small Grains summary
- December Crop Production Annual Summary









# June Area Frame Survey Questions

- Total land and total cropland
- Cattle, hogs, sheep, horses
- GMO seed
- Grains in storage
- Computer and internet use
- Economic size and type of farm



## FSA Data

- We adjust our planted acreage estimates towards FSA totals in October for row crops
- Additional changes can be if needed.





## NASS and FSA

- NASS is faster than FSA because we use samples.
- FSA has data from many more farms
  - So, it takes longer, and it is more expensive.
- In October, NASS will make small acreage adjustments towards FSA totals, if needed.





# Yield Forecasting





## Two Basic Methods

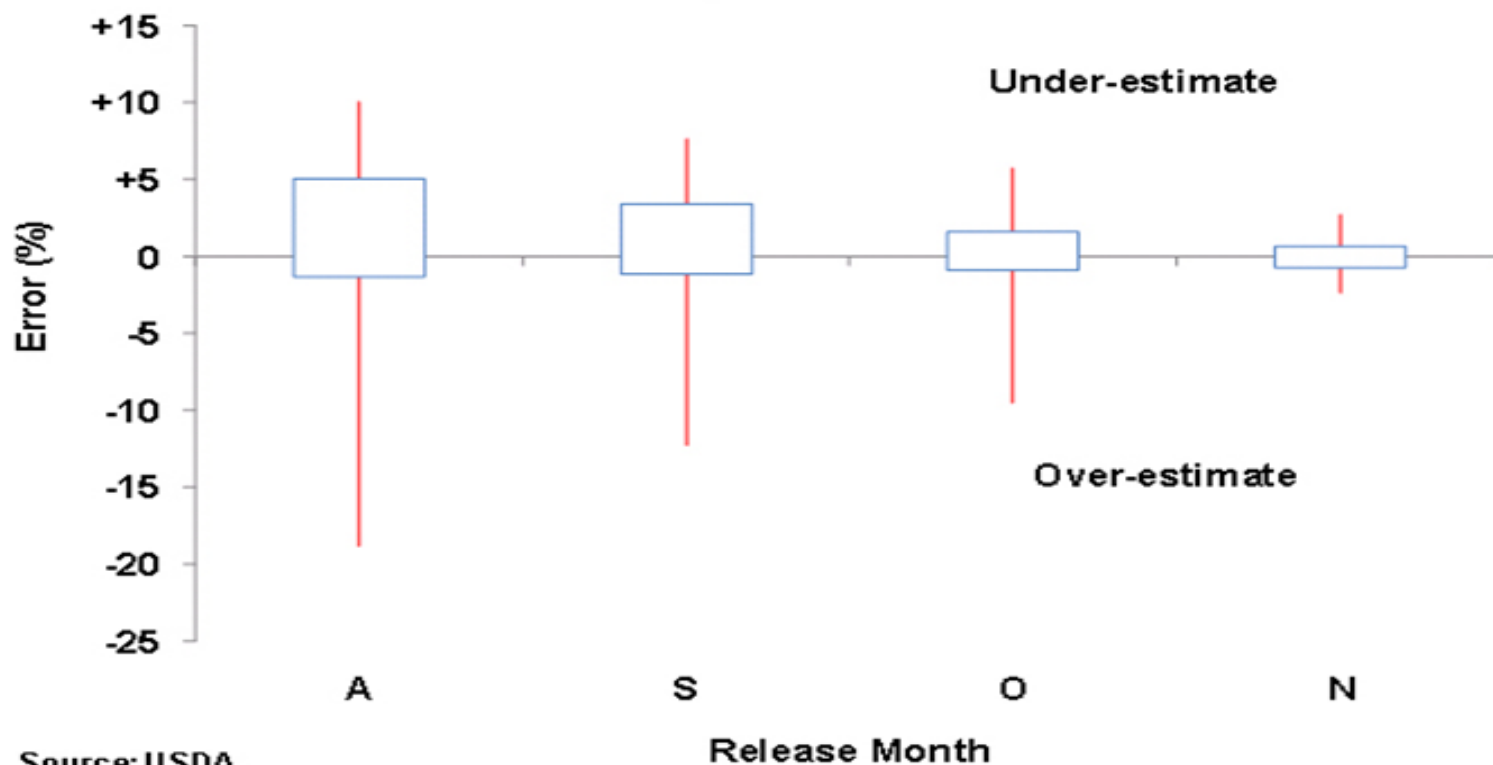
- Ask the farmer (subjective)
  - Mail, phone, personal interview
- Count the crop (objective)
  - Corn ears, soybean pods, wheat heads
  - We use a lab to determine moisture content and shelling fraction.





# NASS Corn Forecasts

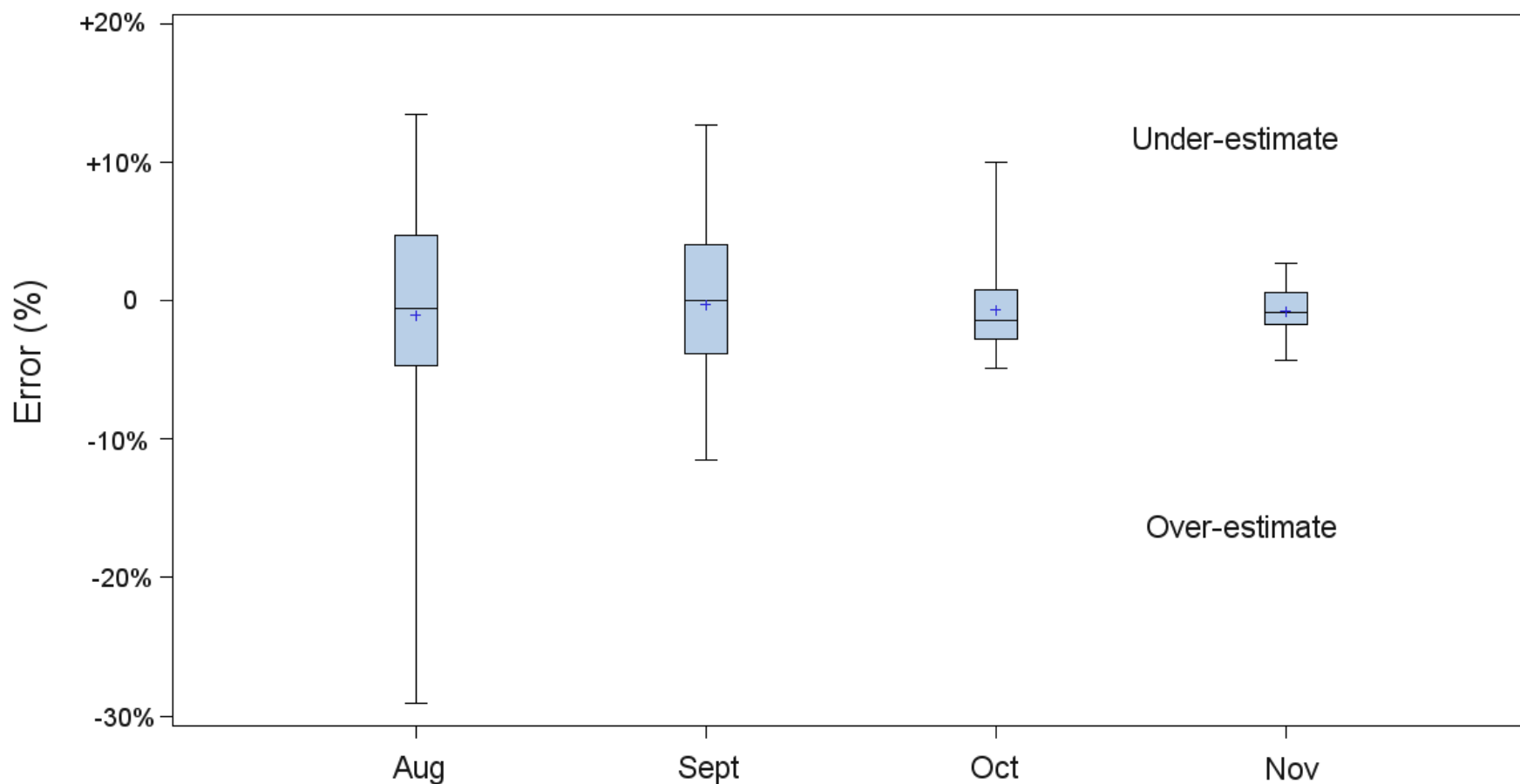
**Figure 1. USDA Errors in Forecasting U.S. Average Corn Yield, 1970-2010**



Source: USDA



## IL Corn Yield Forecast Errors 1980-2010



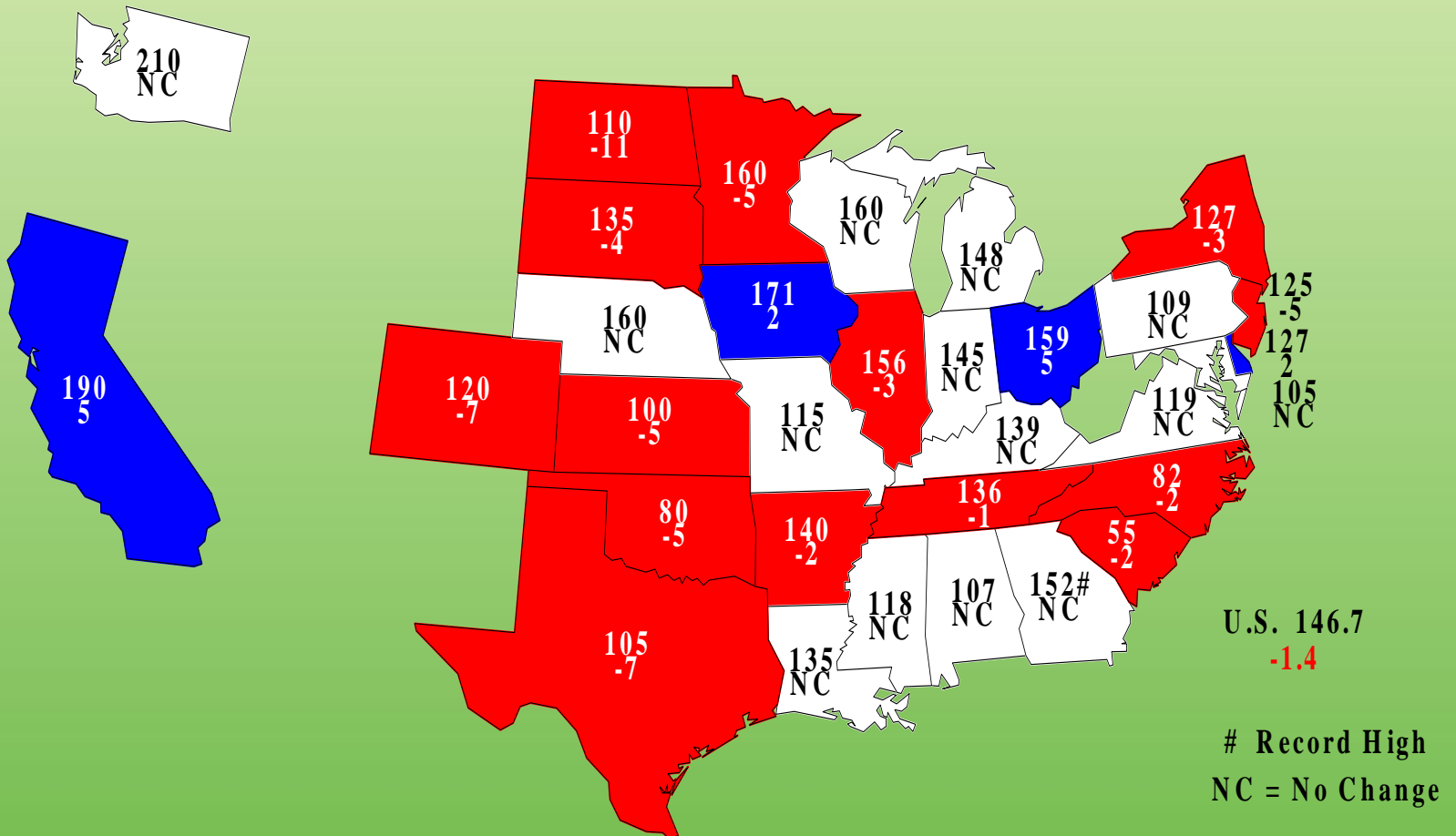


## Wrap up Yield Forecasts

- This is our track record.
- We can send you the spreadsheets used to make those charts.
- We can also show you how to get the data from QuickStats.
- 800-622-9865
- [nass-il@nass.usda.gov](mailto:nass-il@nass.usda.gov)

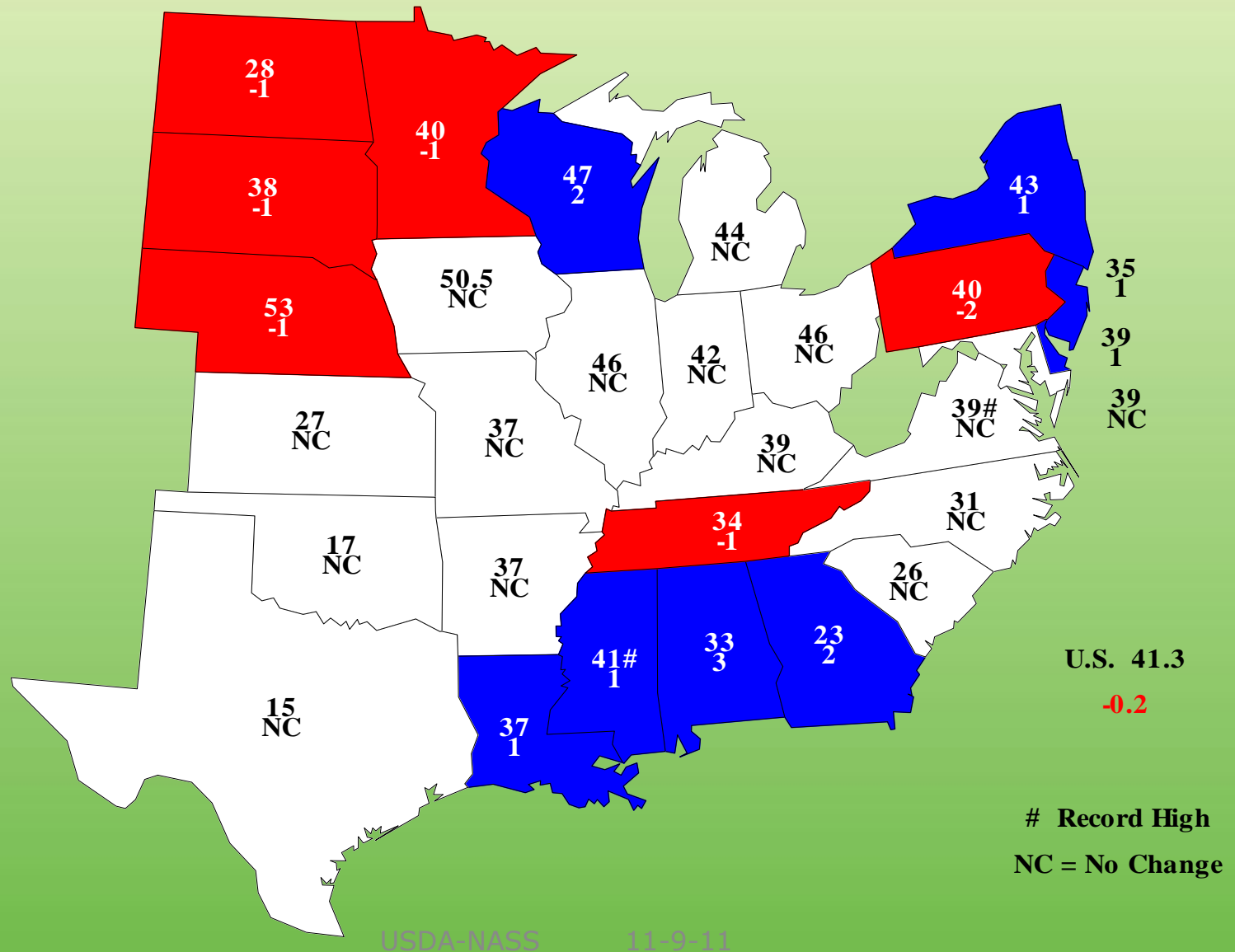
# Corn for Grain Yields, November 1, 2011

## Bushels and Change From Previous Month



# Soybean Yields, November 1, 2011

## Bushels and Change From Previous Month





# County Estimates





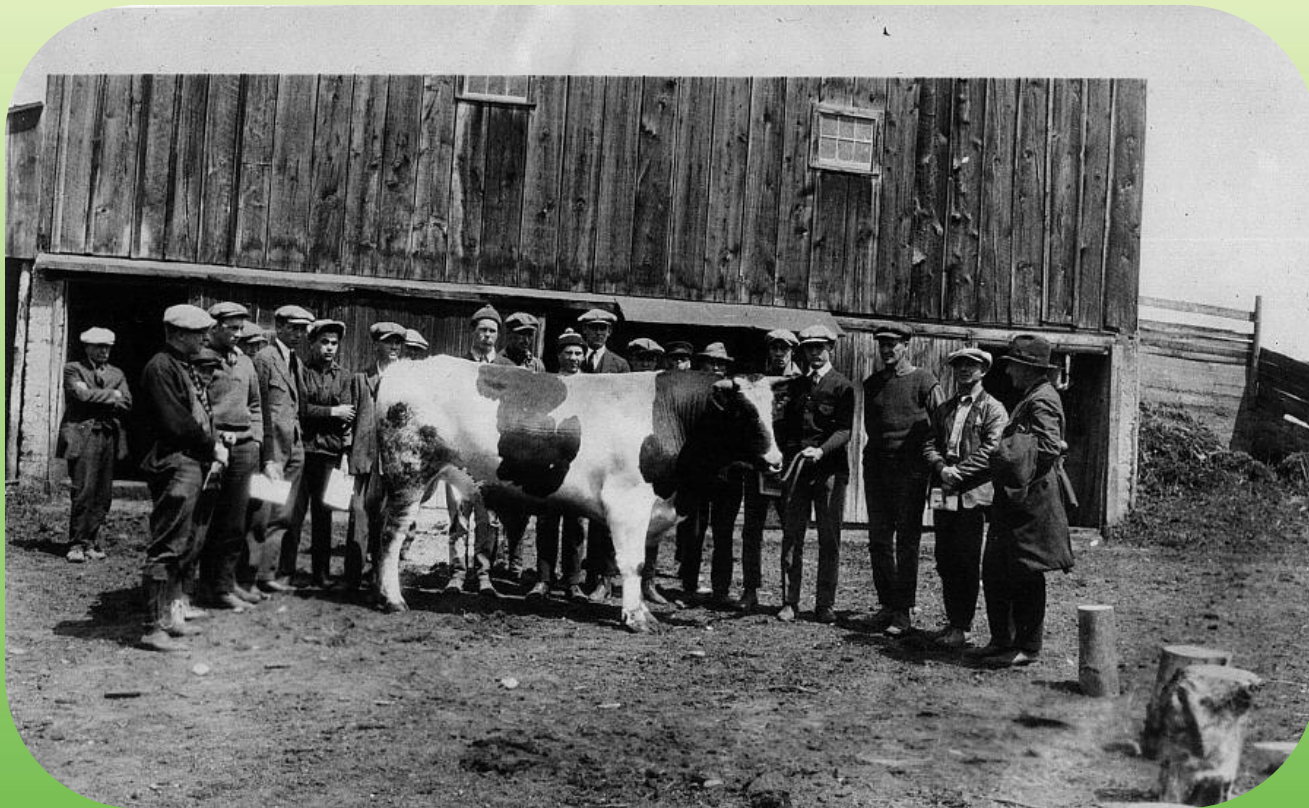


## County Estimates

- Additional farmer reports (acres & yield)
  - 10,000 for row crops
  - 3,900 for small grains
- FSA data for county acreage
- RMA data (abandoned acres)
- Satellite imagery (acres & yield)

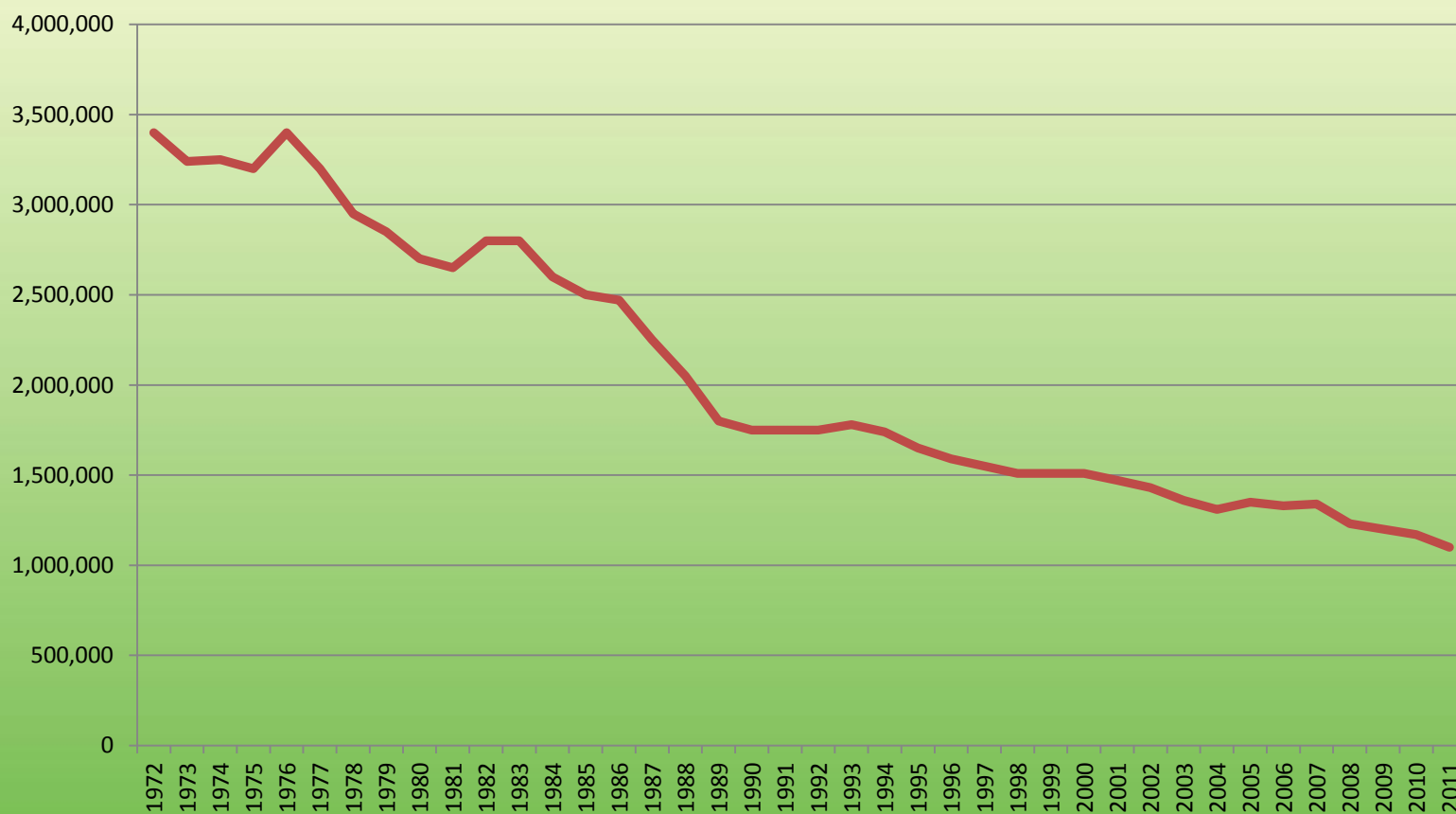


# Livestock Estimation



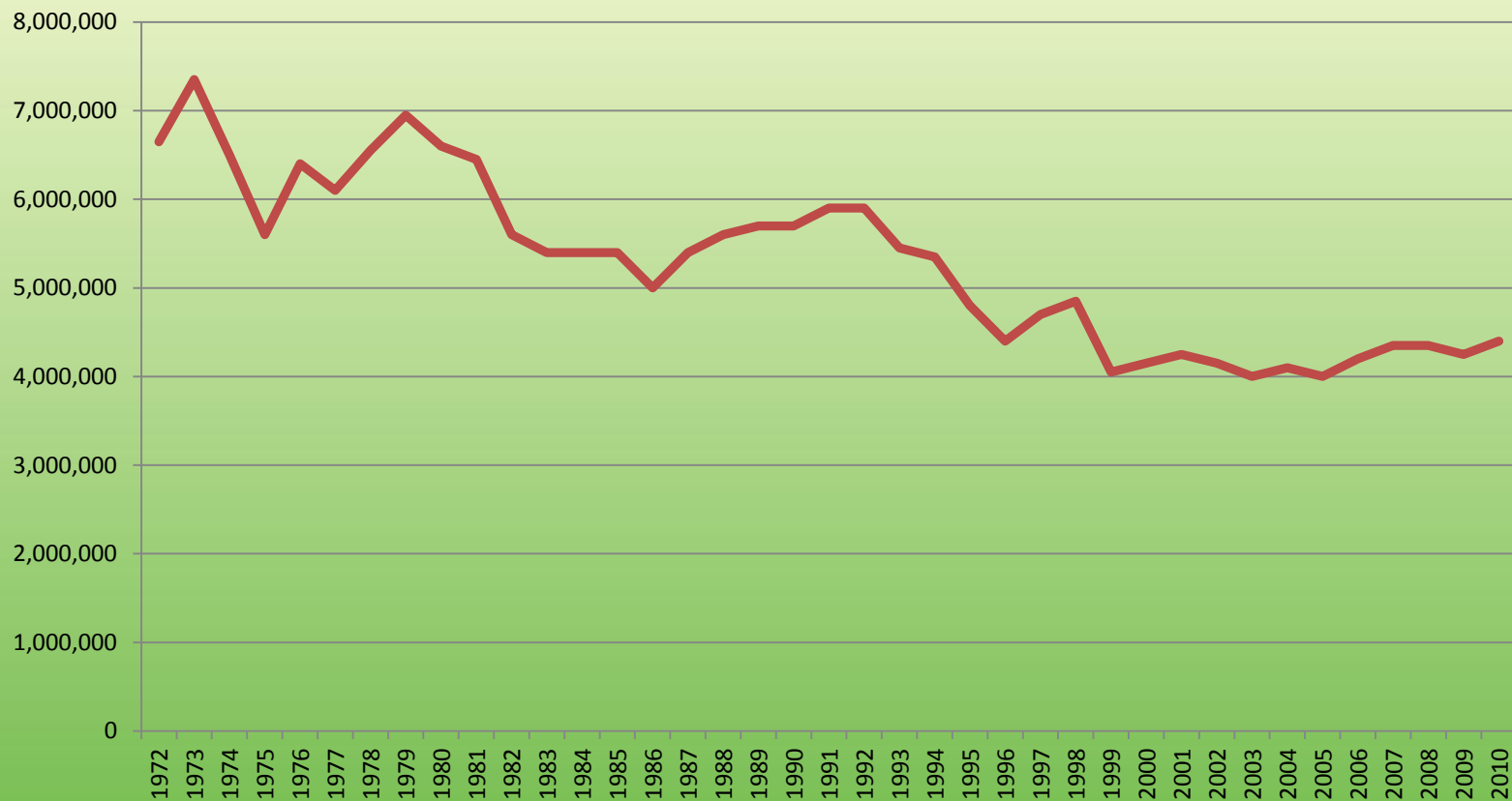


## IL Cattle Inventory



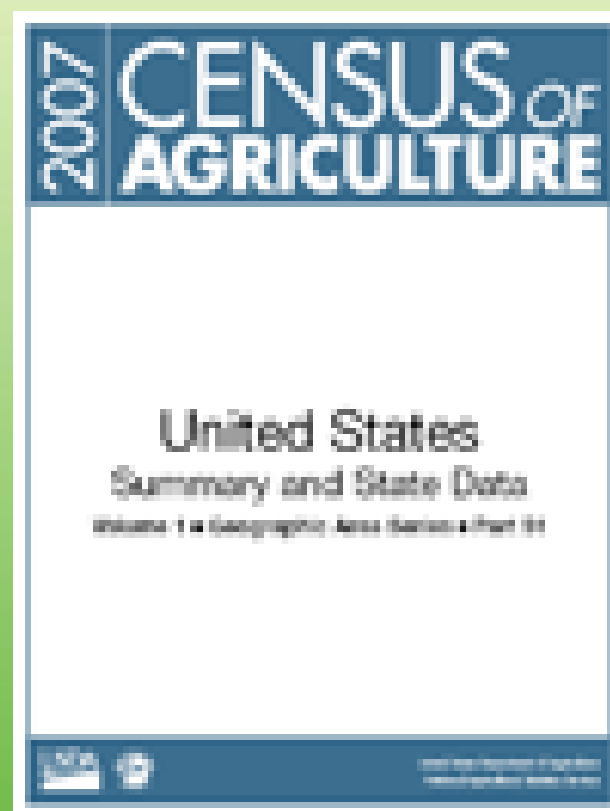
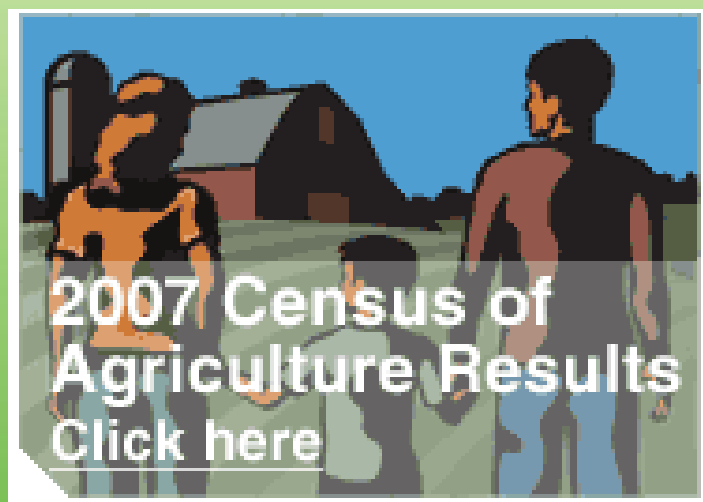


## IL Hog Inventory





# Census of Agriculture





# Census of Agriculture

- Every 5 years
- Next Census will be mailed in December 2012.
- Reference year is 2012.
- Content is broader than any of our surveys
  - All livestock species
  - All crops
  - Sales and expenses
  - Demographics





## Confidentiality

- Names, addresses, phone numbers, etc. are protected by Title 7 of the US Code, Section 2276
- CIPSEA (Confidential Information Protection and Statistical Efficiency Act) prohibits public disclosure of individual information.
- Personal information, including reported data are protected from legal subpoena and FOIA (Freedom Of Information Act).



## Penalties

- NASS employees and contractors (enumerators) are subject to the following penalties
- Five years in jail
- \$250,000 fine, or both
- NASS employees cannot make futures trades

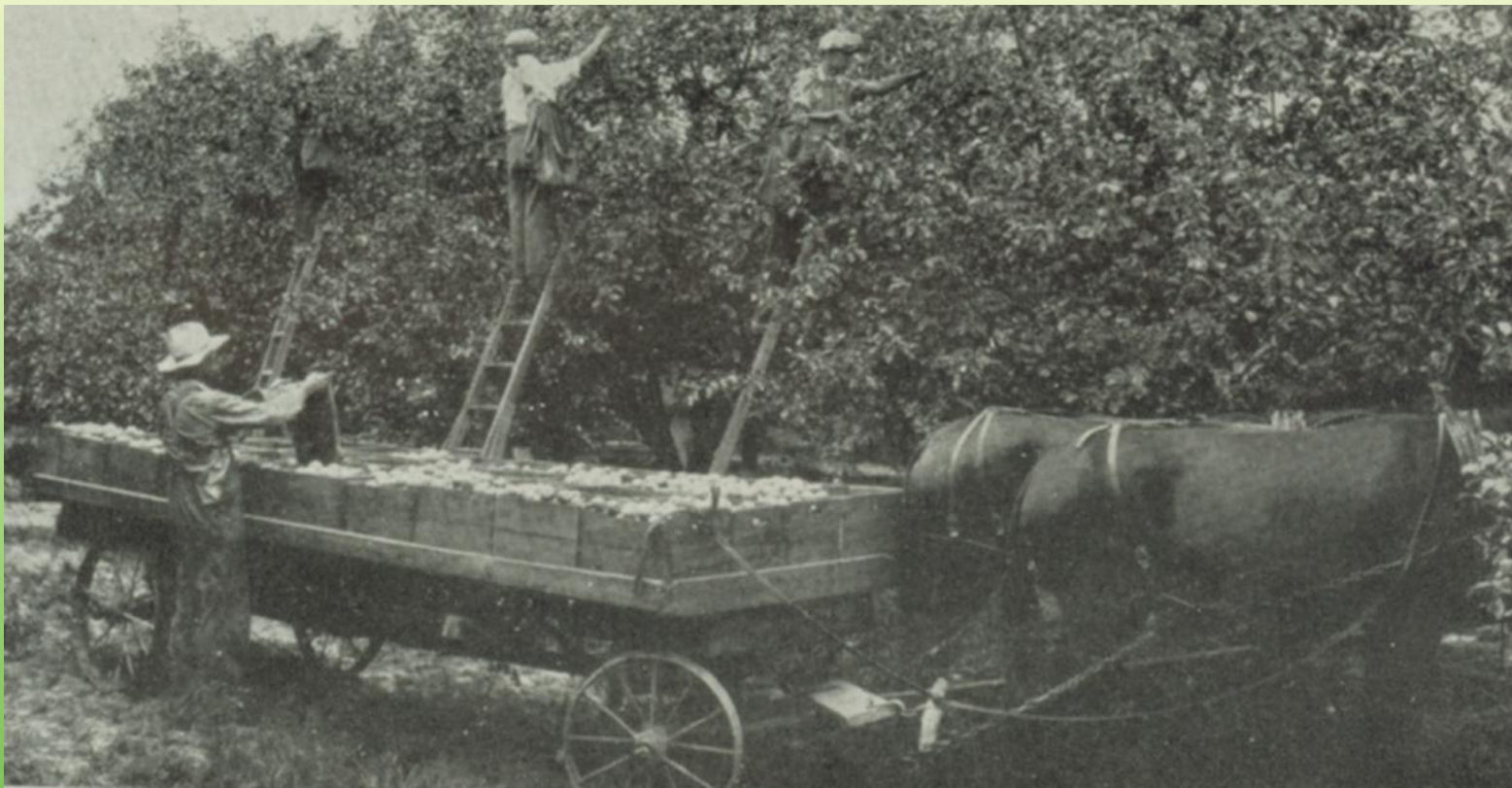


# Data Security

- Passwords
- Encryption
- Training staff
- Suppression process
  - For some commodities, we cannot publish the county total.
  - We suppress and don't publish anything.



# Economic Statistics Program





## Economic surveys

- Prices Received - Monthly and Seasonal Average
- Prices Paid
- Prices Received and Paid Indexes
- Land Values, Cash Rents
- Wage Rates





# Economic Estimates


Agricultural Resource Management Survey  
(ARMS)






# ARMS Phase III

Project 904 - ARMS Phase III CORE - Version 5 - QID 044006 OMB No. 0535-0218 Approval Expires 12/31/2012



**AGRICULTURAL RESOURCE  
MANAGEMENT SURVEY**  
2011



**National  
Agricultural  
Statistics  
Service**

National Agricultural  
Statistics Service  
1201 East 10th Street  
Jeffersonville, IN 47132  
1-888-424-7828  
Fax: 1-812-218-2232  
e-mail: [nass@nass.usda.gov](mailto:nass@nass.usda.gov)

**ERS**  
ECONOMIC RESEARCH SERVICE

YOUR REPORT IS CONFIDENTIAL  
and it will only be used for statistical purposes.  
Your report CANNOT be used for purposes of  
taxation, investigation, or regulation. The law  
also provides that copies retained in your files  
are immune from legal processes.

Results from this important data collection will  
be available in August 2012 at  
<http://www.nass.usda.gov> and  
<http://www.ers.usda.gov/>

Please make corrections to label name, address, and ZIP code if needed.

**SECTION A: LAND IN FARM/RANCH**


For the farm/ranch listed above, please report the 2011 farm/ranch land owned, rented or used by you, your spouse, or by the partnership, corporation or organization for which you are reporting. (Include all cropland, idle land, CRP, pastureland, woodland, wasteland, farmstead, acres used for crop/livestock production facilities, and all other building sites associated with this operation, etc.)

	NONE	+	NUMBER OF ACRES
1. How many acres of farm and ranch land were <u>owned</u> ? .....	<input type="checkbox"/>	+	0030
2. How many acres of farm and ranch land were <u>rented</u> or <u>leased</u> from others-- (Exclude land used on an animal unit month (AUM) or fee per head basis under a grazing permit.)			
a. for a fixed or flexible <u>cash rent</u> payment? .....	<input type="checkbox"/>	+	0021
b. for a <u>share</u> of crop or livestock production? (Include hybrid rental arrangement where rent paid is based on a fixed cash payment plus some shared production.) .....	<input type="checkbox"/>	+	0023
c. for <u>free</u> ? .....	<input type="checkbox"/>	+	0024
3. SUBTOTAL (total Items 1 + 2a + 2b + 2c) .....		=	SUBTOTAL
4. How many acres of farm and ranch land were rented or leased <u>to others</u> ? (Include land rented out for cash, for a share of crop or livestock production, or rent free.) .....	<input type="checkbox"/>	-	0025
5. TOTAL ACRES in this operation in 2011 (subtract Item 4 from Item 3) .....		=	TOTAL 0026


Section A continues on next page


Office Use Only	R. Unit	Resp	Respd	Mode	Enum	Eval	MM	DD	YY	Time	Beg	End
	0021	9901	9902	9903	0008	0100	9910	0008	12	or	0004	0005

# www.nass.usda.gov



United States Department of Agriculture  
National Agricultural Statistics Service





[Home](#) | [About NASS](#) | [Newsroom](#) | [Publications](#) | [Data and Statistics](#) | [Census](#) | [Surveys](#) | [Help](#) | [Contact Us](#)

### Search NASS

Google™ Custom Search

- Advanced Search
- Search Tips

### Browse NASS by Subject

- ▶ Crops and Plants
- ▶ Demographics
- ▶ Economics and Prices
- ▶ Environmental
- ▶ Livestock and Animals
- ▶ Charts and Maps
- ▶ Research and Science
- ▶ Education and Outreach

### Statistics by State

Select a State

You are here: [Home](#) /

The National Agricultural Statistics Service provides timely, accurate, and useful statistics in service to U.S. agriculture.

### Today's Reports from NASS

Nov 10, 2011

**Dairy Products Prices** [Text](#) | [PDF](#) | [CSV](#)  
Released at 1:00 P.M. ET

**Peanut Prices** [Text](#) | [PDF](#) | [CSV](#)  
Released at 3:00 P.M. ET

### Headlines

**USDA Surveys Farming and Conservation Practices in the Chesapeake Bay Watershed**

**NASS Reduces Agricultural Estimation Programs**

**2010 U.S. Marketing Year Average Price of Cotton Up from 2009**

**NASS to Re-Survey Operators With Unharvested Small Grains**

**Postharvest Chemical Usage Survey Suspension**






### I Want To...

- Make sure I'm counted
- Respond to NASS surveys online
- Ask a specialist
- Request a special tabulation
- Submit Feedback on the Chemical Use program
- Find charts or maps or geospatial data
- Learn about career opportunities
- Find North American agricultural statistics

### Find NASS Publications

- Today's Reports
- Date
- Subject
- Keyword
- Release Day
- Title
- Browsing our Guide to Products and Services

### Follow NASS

Receive reports by Email  
[National](#) | [State](#) | [News](#)



# Thank You

800-622-9865

[nass-il@nass.usda.gov](mailto:nass-il@nass.usda.gov)