

Updated Supply/Demand/Price Prospects for Corn and Soybeans








Darrel Good and Todd Hubbs
 d-good@illinois.edu / jhubbs3@illinois.edu
 Department of Agricultural and Consumer Economics
 University of Illinois

Presentation Materials

- Visit the 'Downloads' page at www.farmdoc.illinois.edu/webinars
 - PDF of slides are available
 - Video available tomorrow
- Questions
 - Please submit questions during the presentation



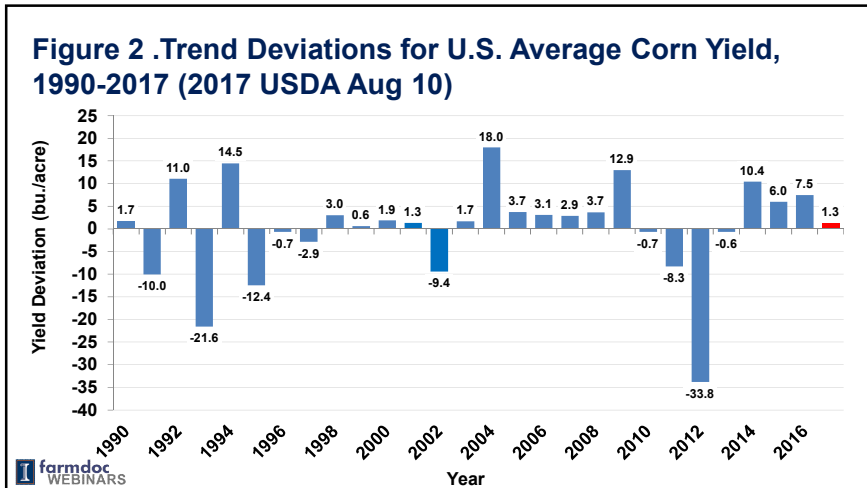
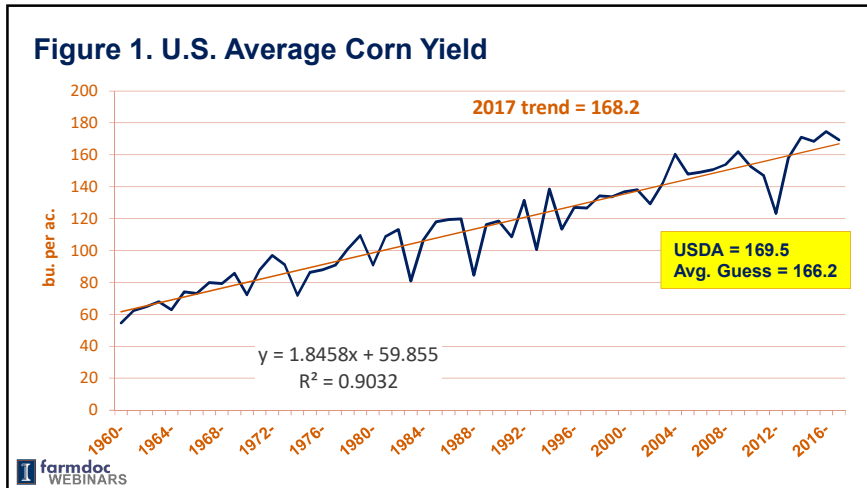


Figure 3. Corn Yield by State

Aug 1, 2017 Bushels and Change from Previous Year

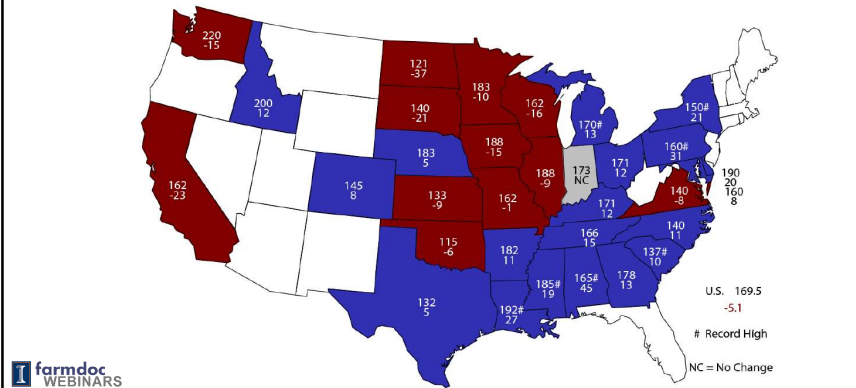
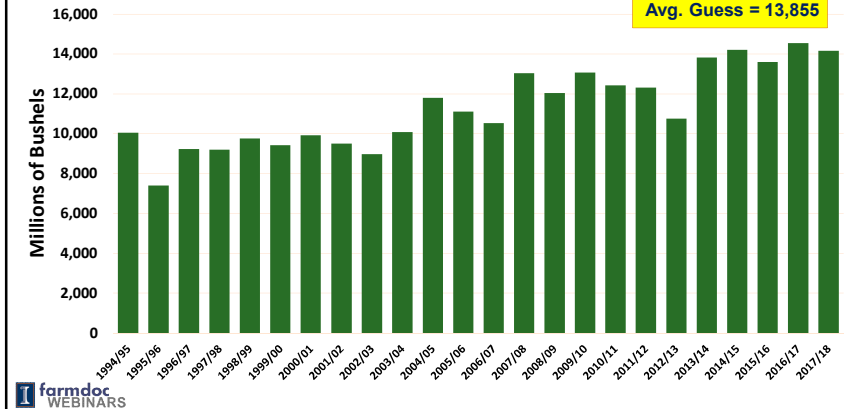
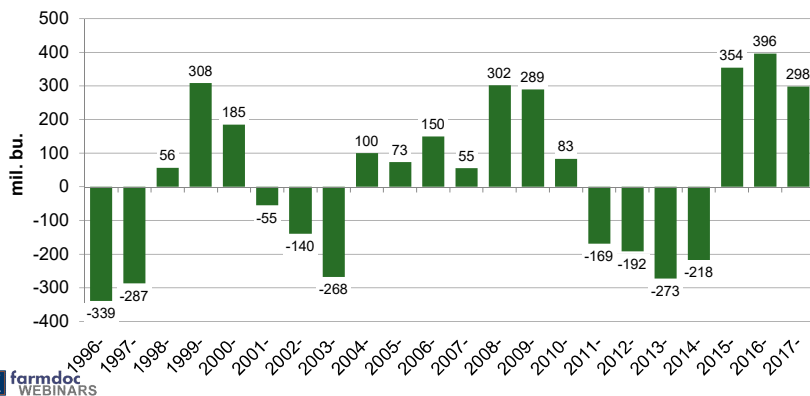
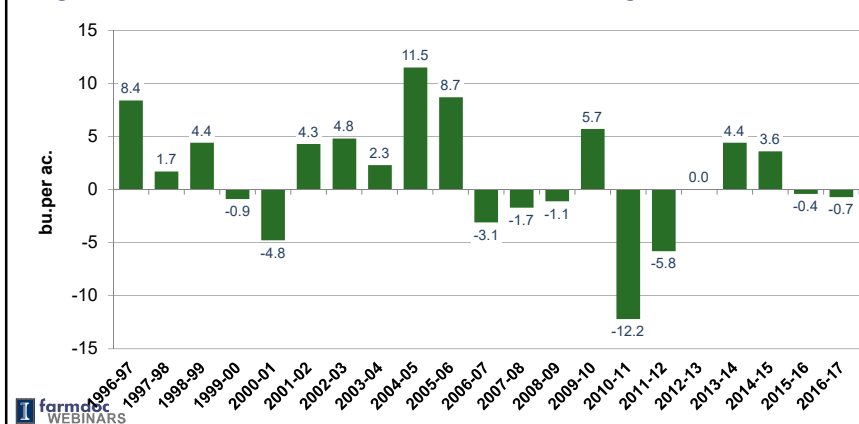
**Figure 4. U.S. Corn Production**USDA = 14,153
Avg. Guess = 13,855**Figure 5. USDA August Corn Production Forecast Minus Average Trade Guess****Figure 6. Final U.S. Corn Yield Estimate Minus August Forecast**

Figure 7. Harvested Acres of Corn Minus August Forecast

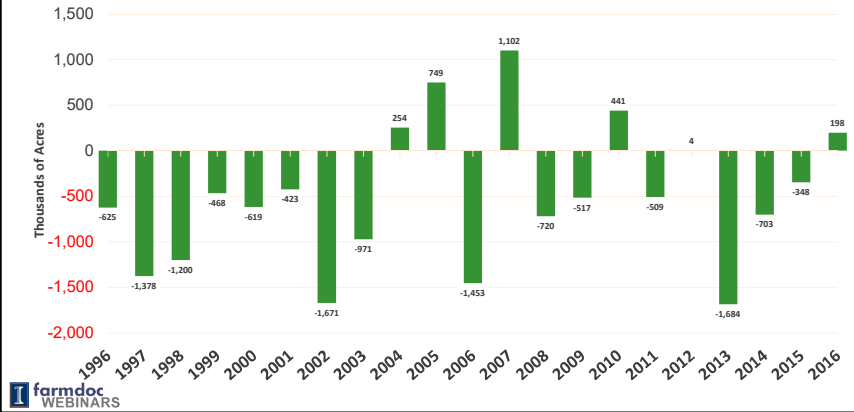


Figure 8. Monthly Corn Use for Ethanol Production

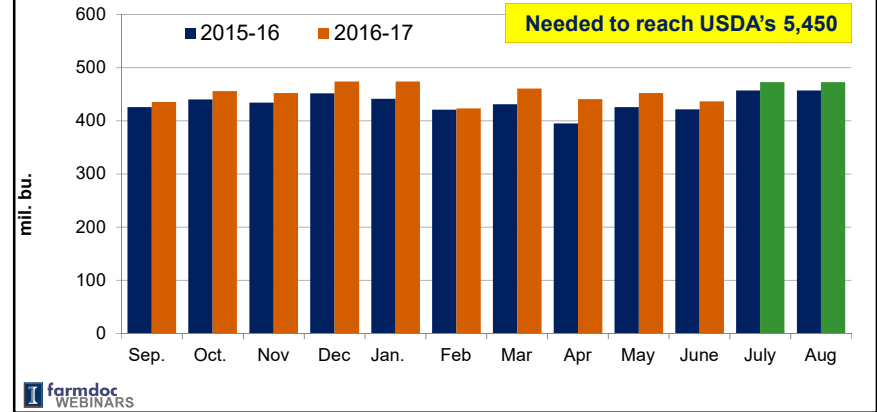


Figure 9. 2016-17 Corn Export Progress

USDA projection: 2,225 mb
 Total-to-date: 2,165 mb
 Unshipped sales: 162 mb
 Needed per week: 15.7 mb
 Recent average: 38.5 mb



Figure 10. Fourth Quarter Feed and Residual Use of Corn

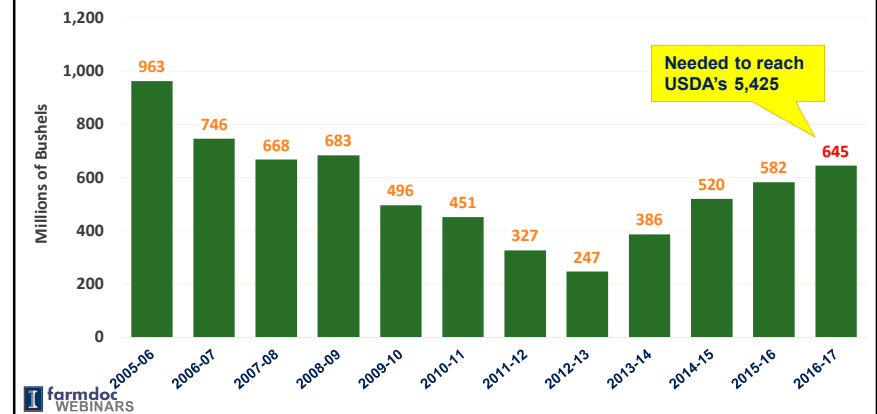


Figure 11. September 1 Corn Stocks Estimate Minus Average Guess

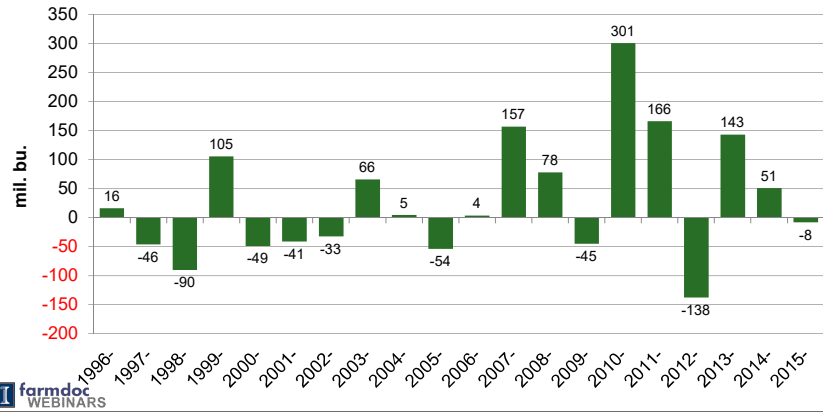


Figure 12.

Corn Balance

	2017/18	2017/18
	USDA-8/10	
Supply:		
Planted Acreage (million acres)	90.9	90.9
Harvested Acreage (million acres)	83.5	83.5
Yield (Bushels / Acre)	169.5	168.0
Beginning Stocks (million bushels)	2,370	2,350
Total Production (million bushels)	14,153	14,028
Imports (million bushels)	50	50
Total Supply (million bushels)	16,573	16,428
Consumption:		
Feed and Residual (million bushels)	5,450	5,500
Ethanol (million bushels)	5,500	5,475
Other Domestic (million bushels)	1,500	1,500
Exports (million bushels)	1,850	1,900
Total Consumption (million bushels)	14,300	14,375
Ending Stocks (million bushels)	2,273	2,053
Ending Stocks/Total Consumption (%)	15.9%	14.2%
Average Price (\$/bu.)	\$3.30	\$3.65

Figure 14. Reciprocal Regression Model Specifications of U.S. Farm Price of Corn and Ending Stocks/Total Use, 1990-91 - 2016-17*

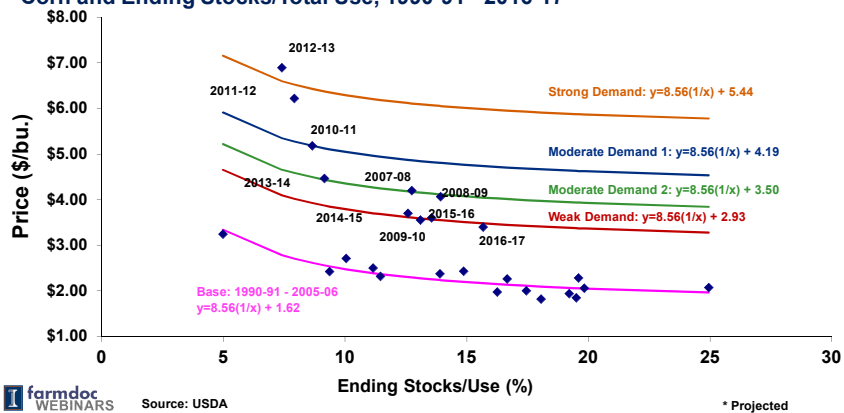


Figure 14. New Crop Corn Basis-South Central Illinois

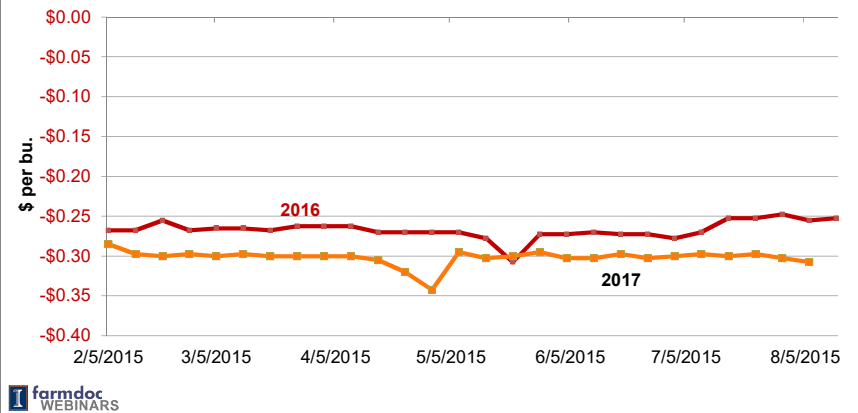


Figure 15. Carry in the CBOT Corn Futures Market on August 10, 2017 (settlement prices)

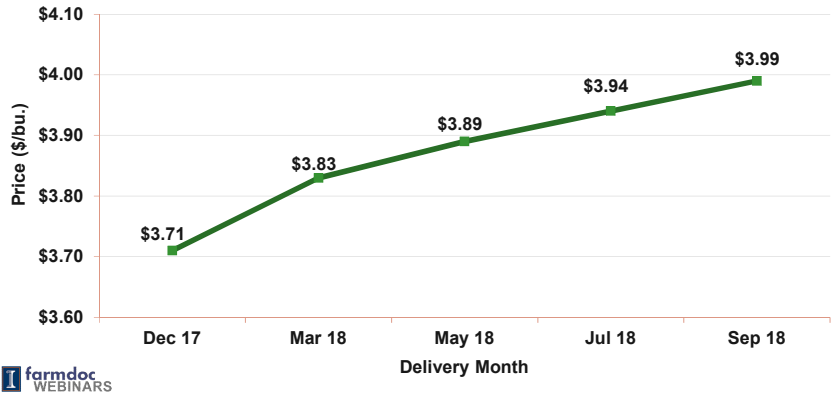


Figure 16. U.S. Soybean Average Yield

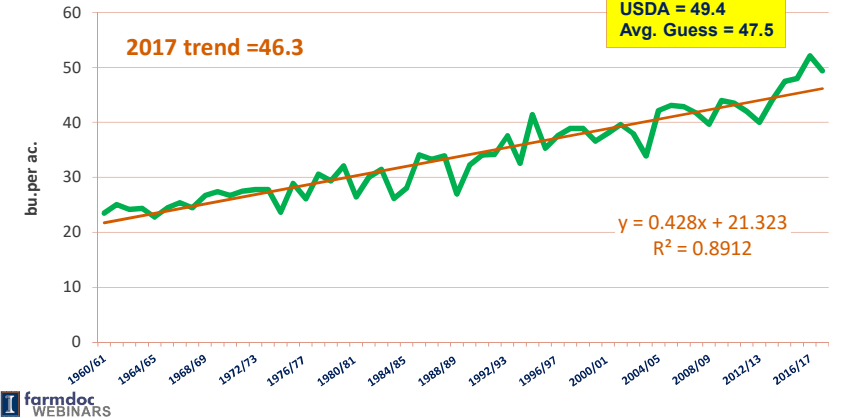


Figure 17. Trend Deviations for U.S. Average Soybean Yield, 1990-2017 (2017 USDA Aug 10)

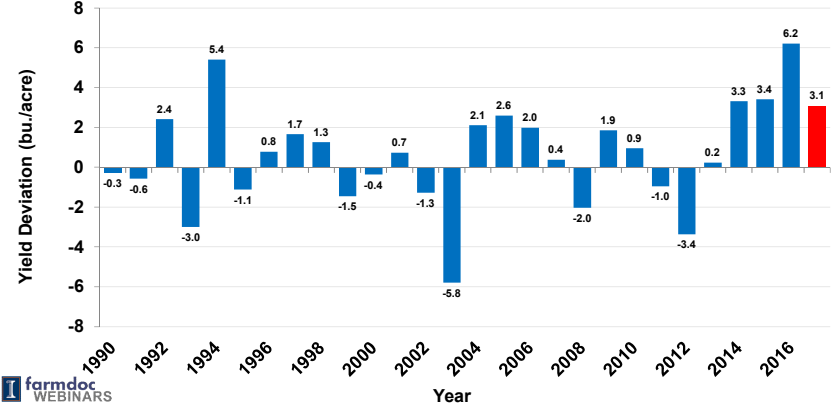


Figure 18. Soybean Yield by State Aug 1, 2017 Bushels and Change from Previous Year

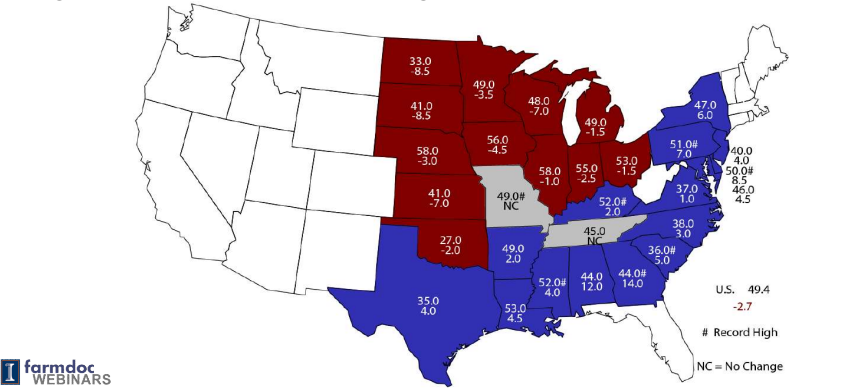


Figure 19. U.S. Soybean Production

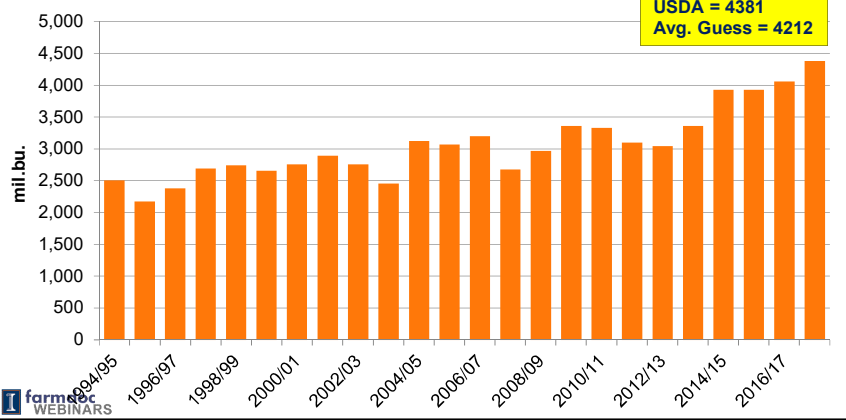


Figure 20. USDA August Soybean Production Forecast Minus Average Trade Guess

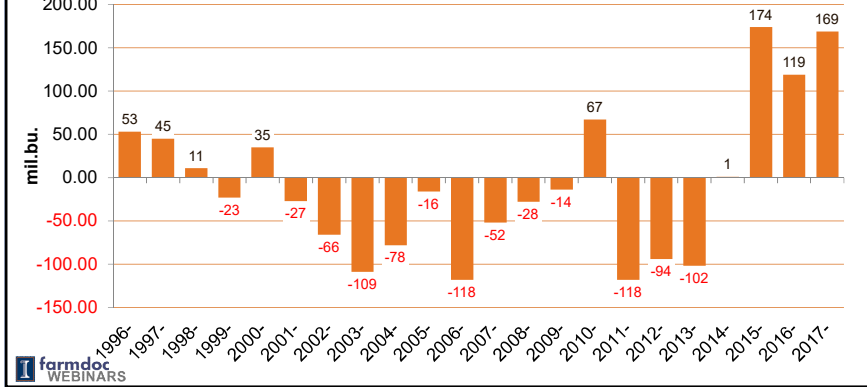


Figure 21. Final U.S. Soybean Yield Estimate Minus August Forecast

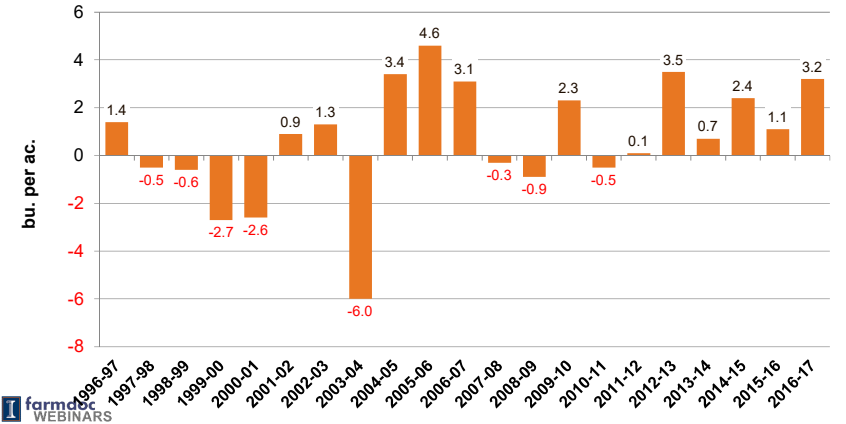


Figure 22. Harvested Acres of Soybeans Minus August Forecast

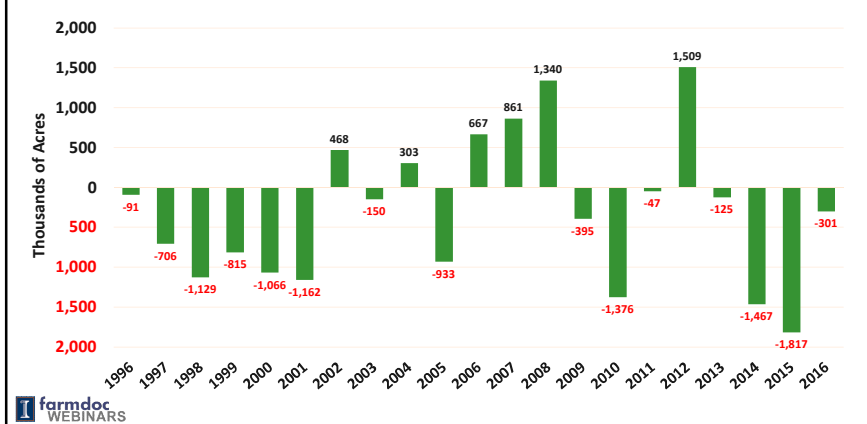


Figure 23. 2015-16 Soybean Export Progress

USDA projection: 2,150 mb
 Total-to-date: 2,070 mb
 Unshipped sales: 198 mb
 needed/week: 20.0 mb
 Recent average: 21.7 mb



Figure 24. Monthly Soybean Crush

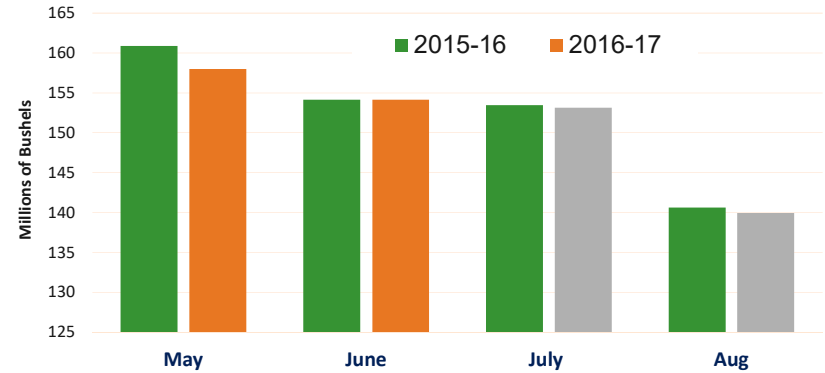


Figure 25. September 1 Soybean Stocks Estimate Minus Average Guess

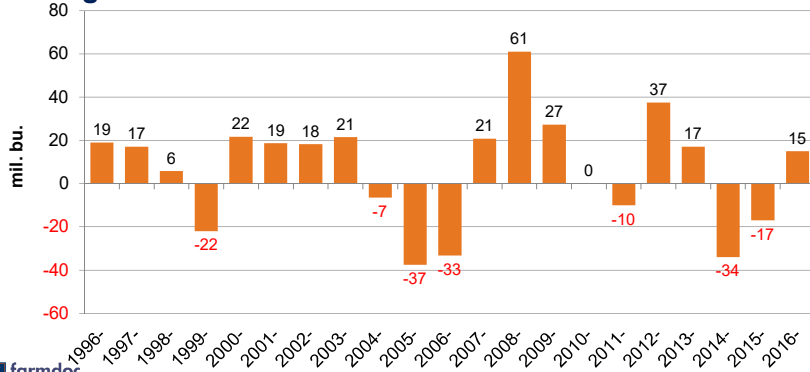


Figure 26. Soybean Balance

	2017/18 USDA- 8/10	2017/18
Supply:		
Planted Acreage (mil.)	89.5	89.5
Harvested Acreage (mil.)	88.7	88.7
Yield (bu./ac.)	49.4	48.5
Production (mil. bu.)	4,381	4,302
Beginning stocks (mil. bu.)	370	370
Imports (mil. bu.)	25	25
Total Supply (mil. bu.)	4,777	4,697
Consumption:		
Crush (mil. bu.)	1,940	1,920
Export (mil. bu.)	2,225	2,100
Seed and feed (mil. bu.)	136	136
Total Consumption(mil. bu.)	4,301	4,156
Ending stocks (mil. bu.)	475	541
Stocks-to-use	11.0%	13.0%
Average farm price (\$/bu.)	\$9.30	\$9.00



Figure 27. Reciprocal Regression Model of U.S. Farm Price of Soybeans and Soybeans Ending Stocks/Total Use, 1990-91 - 2016-17*

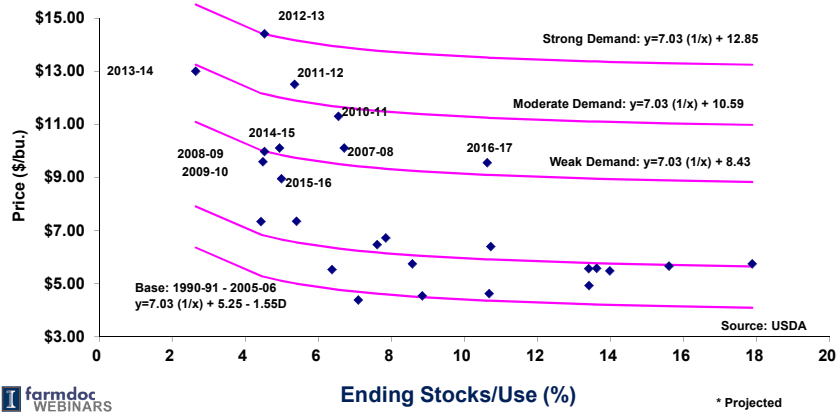


Figure 28. New Crop Soybean Basis-South Central Illinois

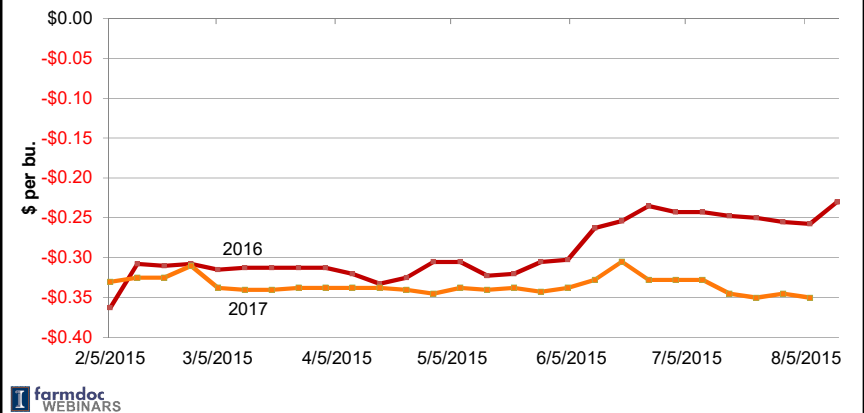
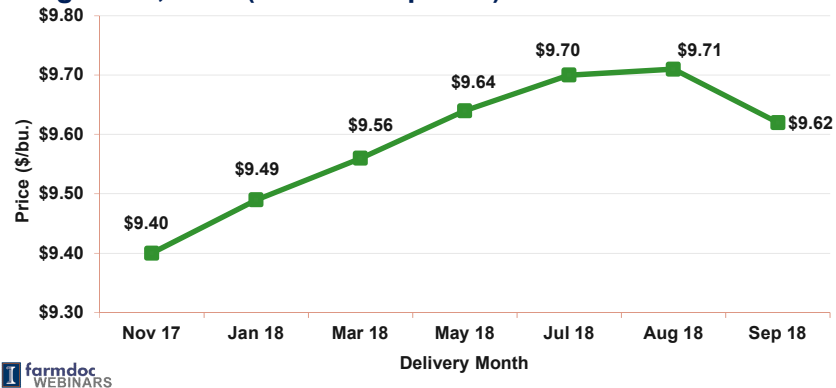


Figure 29. Carry in the CBOT Soybean Futures Market on August 10, 2017 (settlement prices)



Questions?

Please continue to submit questions during this part of the webinar

Visit the 'Downloads' page at www.farmdoc.illinois.edu/webinars